

WEATHER

| | Min. | Max. | Precip. |
|-------------------|------|------|---------|
| Wednesday, Dec. 2 | 33 | 62 | 0.00 |
| Thursday, Dec. 3 | 30 | 60 | 0.15 |
| Friday, Dec. 4 | 29 | 61 | 0.00 |
| Saturday, Dec. 5 | 32 | 42 | 0.00 |
| Sunday, Dec. 6 | 32 | 41 | 0.00 |
| Monday, Dec. 7 | 18 | 31 | Trace |
| Tuesday, Dec. 8 | 26 | 44 | 0.00 |

By H. K. L.

The Chelsea Standard

ONE HUNDRED-FIRST YEAR—No. 25

16 Pages This Week

CHELSEA, MICHIGAN, THURSDAY, DECEMBER 10, 1970

15c per copy

SUBSCRIPTION: \$4.00 PER YEAR

Dana Corp., Union Sign New Contract

Dana Corp. became the first major transportation industry parts supplier to conclude master contract negotiations with the United Auto Workers, it was announced Saturday, Dec. 5.

The Dana Master Contract, which closely parallels GM's settlement was agreed to in principle Friday, Dec. 4. The contract covers more than 10,000 employees in 23 UAW units in the 17 Dana operating facilities in Ohio, Michigan, Indiana, and Pennsylvania, jointly by M. E. Lantz, director.

This announcement was made and Emil Mazey, secretary and of industrial relations for Dana, treasurer of the UAW, and director of the Dana UAW department. Both men indicated that the contract is the most equitable agreement ever negotiated in the transportation parts industry and congratulated all those who contributed to the final settlement.

Ken Kuzon, spokesman for the local Dana plant indicated that the Master Contract, as well as the local contract, await ratification by Dana's union members. A ratification vote will be taken Saturday, Dec. 12, for both contracts. A tentative agreement was reached Dec. 1, according to Kuzon, on the local contract.

Terms of the settlement will be made public after ratification of the agreement by the local Dana UAW units. Dana Corp., in Chelsea has two UAW units, both members of Union Local 497, a shop and maintenance unit, and an office and clerical unit.

With a tentative agreement which spokesmen from both sides have found fair, there is no possibility of a strike at the local Dana plant, at this time, Kuzon indicated.

JV Cagers Down Dundee In First Game

Chelsea's Junior Varsity cagers opened their season on a high note, Friday night, Dec. 4, by defeating the Dundee Vikings, 45-41.

Both teams were cold from the floor, as Chelsea made only 18 baskets out of 59 shots, and Dundee 17 baskets out of 63 shots.

Chelsea got off to an early lead on the strength of Mark Policht's shooting, and John Mann's rebounding, taking a 26-16 half-time score to the locker room.

Bulldog cagers could manage only six points in the third period, as Dundee cut Chelsea's lead to one point at the end of the quarter.

(Continued on page eight)

Beach School Christmas Concert Slated Tonight

Local residents are reminded of the Chelsea Junior High school Christmas Concert which will be held at 7:30 p.m. tonight at Beach school auditorium. The program will feature the seventh and eighth grade bands, and the "Select Choir" at the junior high school.

Kiwanians Host Wives at Holiday Party

Forty Chelsea Kiwanians, their wives, and guests observed their annual Christmas party at Bill Cone's in Jackson, Monday evening, Dec. 6.

President Walter Zeeb livened up the party with a presentation of special gifts.

A musical group from Chelsea High was entertained at dinner, and later returned the favor by providing after-dinner entertainment. Tim Orthing, Jill Flintoft, Carol Dietle, Randall Seitz, and Keith Pfeifle sang a number of Christmas songs. Tim Orthing then led the assembled group in the singing of Christmas carols, as Jill Flintoft accompanied on the piano.

A drawing was held for the winners of the centerpieces, and plants that were used for decorations. Next week will be the "Kids' Christmas Party" hosted by Kiwanians at the Congregational church.

Faculty Foes Frolic For Wrestling Mat

Blood-thirsty basketballers from the Junior High and the Senior High of Chelsea school faculties will cross swords and exchange blows Saturday evening, Dec. 12, at 7:30 p.m. in the gymnasium of the Senior High school.

The scene will be complete with cheerleaders and wildly approving partisan crowds. Rivalries are intense and feelings run high. Who will demonstrate their natural superiority?

Coach Genske at the Senior High will put forth such stellar talent as Phil Bareis, Sam Vogel, Ken Larson, Chuck Kelly, Bill Bainton, Jim Tallman, Doug Davidson, Fred Elmore, Dennis Andriese and the redoubtable Dennis Raymond. The fierce force from the Junior High will list such formidable players as Randy Johnson, Bert Kruse, Ed Lauson, Richard Bareis, Jim Thompson, Pat Clark, Charles Wal-

(Continued on page three)

Varsity Cagers Maul Dundee, 70-47 in Opener

Chelsea's varsity basketball team opened its season with a very satisfying 70-47 win over a stunned Dundee team Friday evening.

Dundee opened the game by getting the first basket but Ron Sweeney tied the game with a short jump shot when Chelsea got the ball. Dundee countered with three free throws to lead, 5-2, with about two minutes gone in the game.

Sweeney then scored another two points, and Howie Treado scored on a short hook shot to put Chelsea ahead to stay.

The tenacious Bulldog defense held Dundee scoreless for the remainder of the first quarter, while the Bulldog offense finished strong, with 13 points.

Both teams opened up in the second quarter, but Chelsea continued to pull away by outscoring Dundee, 17-13. As the second quarter progressed, the smaller Bulldogs demonstrated their superior rebounding by getting two and three shots at the basket each time they shot.

Sophomore Jeff Schmidt got an offensive rebound, and scored just before the horn sounded to send the teams into the locker room, to increase Chelsea's lead to 35-18.

A determined Dundee came out shooting in the third quarter. Every time they began to close the gap, however, the poised Bulldogs pulled away.

Dundee had their best period in the third quarter, scoring 18 points, but the confident Chelsea team outscored them, 23-18. George Cameron led the scoring in the third quarter scoring six of his nine points.

The fourth quarter was a close repeat of the third quarter, with Dundee making the final challenge. With about six minutes remaining in the game, Dundee cut Chelsea's lead to 13 points. Chelsea quickly countered with three straight baskets.

The hustling Bulldogs showed much poise and confidence as they completely controlled the ball game. Wayne Welton did an exceptional job of "quarterbacking" both the offense and the defense.

Ron Sweeney and Howie Treado led the scoring with 22 and 11 points, respectively. Jeff Hughes

(Continued on page eight)

Bulldog Cagers Lose to Panthers

Chelsea varsity basketball team took a 60-55 loss from Stockbridge Tuesday evening in a non-league game played on the home floor. Ron Sweeney poured in 24 points for the Bulldogs in a losing cause and Howie Treado added another 10 points to the attack.



SANTA CLAUS hears the Christmas wishes of Radine Cheever, who is in the second grade at North school, at his station in front of the Chelsea Post Office. Santa arrived Saturday afternoon, and rumor has it he will return this week, and next. Radine was one of many local children who turned out to see the jolly old man when he came to town.

Wrestlers Pin 35-18 Defeat On Tecumseh

Chelsea wrestlers met Tecumseh Thursday, Dec. 3, pinning their opponents in four of the first five matches. The Bulldog wrestlers took the match by a score of 35-18.

At 98 pounds, Jon Marzec, in his first varsity match, pinned his opponent in 1:54 of the first period. Mark Montagne followed with a 1:28 pin in the 105-pound class. At 112, sophomore Pete Stall was pinned. Mike Spence came through with a third period pin at 1:19.

Captain Jim Wencel, wrestling at 126, pinned his opponent in 2:29, while Larry Jones, in the 132-pound class, lost a 6-2 decision.

Sophomore Tim Lancaster won at 138 with a 4:35 pin.

Chelsea ran into some trouble at this point, as Captain Gary Montagne was pinned, and Bill Kushmaul lost a 7-4 decision, at 155.

Doug McDonald, at 167, ended up with a 2-2 draw.

Chelsea put the contest away, however, as Randy Seitz won a 9-2 decision at 185, and Rod Branham pinned his heavyweight opponent at 132.

Coach Richard Bareis indicated that he was very pleased with the performance of the young wrestlers. He noted that some of the more seasoned wrestlers needed much more work before they would be ready to take on experienced competition. He pointed out that Chelsea takes on an improved Dundee squad tonight, Dec. 10, at Dundee, and that Chelsea will host a fine Holt team next Tuesday, Dec. 15.

Holt, in addition to being one of the highly rated Class B wrestling squads, has John Hogarth, who is the Michigan state 165-pound wrestling champion. This match should give Chelsea wrestlers an idea of how they rate against good competition.

Chelsea is, at this time, planning a double dual wrestling meet for Jan. 2 Haselett, along with Chelsea, will meet and Coach Bareis hopes that either Belleville, Adrian or Romulus will fill out the four-team meet.

The Chelsea junior varsity de-

(Continued on page seven)



DAVID C. McLAUGHLIN

David McLaughlin Begins Practice of Law in Jackson

David C. McLaughlin, former resident of Chelsea, was admitted to the State Bar of Michigan, Tuesday, Nov. 24. McLaughlin is the son of Russell A. McLaughlin, a long-time resident of Chelsea, now of Houghton Lake, and Mrs. Jean F. McLaughlin, of Port Lauderdale, Fla.

Swearing in ceremonies were conducted at the Jackson County building in the Court Room of the Honorable John C. Dalton, Circuit Judge, with fellow Circuit Judge Gordon W. Britten at his side.

Attorney Alexander C. Perlos moved for admission of McLaughlin. The two Judges sitting en banc for the occasion granted the motion.

The young attorney was graduated from Chelsea High school in 1962. He earned a Bachelor of Arts Degree from the University of Michigan, and more recently he was graduated from Wayne State University Law School, where he obtained a degree of Juris Doctorate.

McLaughlin has established his office for the general practice of law, and will be associated with Alexander Perlos, 302 Barris Building, Jackson.

Methodists Start Canvass For Funds

First United Methodist church of Chelsea begins an every-member visitation program this Sunday.

The visitation program is in conjunction with the church's Financial Crusade for underwriting its 1971 budget. Teams of selected members are serving as canvassers to see that every member in the Chelsea area is contacted during the crusade.

This year members are being challenged to meet greater financial goals than in recent years. Crusade co-chairmen, Glenn Kraai and Dr. Clare Warren, point out that in addition to supporting a general budget, members will be asked to pledge to a new parsonage fund. A minimum of \$35,000 in pledges is sought for the 1971 general budget. The new parsonage was approved by the 1970 Spring congregational meeting.

Dr. Allen R. Regan, of the National Division, Board of Missions, The United Methodist Church, is serving as Crusade Director. Under Dr. Regan's guidance, selected members of the congregation are receiving instructions to aid them in the canvassing program. Three instructional meetings will be held for this purpose. All canvassers will make their pledges on Dec. 6, during a training program which begins with a dessert luncheon. All canvassing will be completed by Dec. 15, when a victory rally will be held at 8:30 p.m. in the church Social Center.

At a cross examination style tournament held Saturday, Dec. 6, at Ann Arbor Huron school, Chelsea's varsity team went 2-6, while the novice debaters went 5-3 for the day. Dan Gaunt took the third place speaker's trophy. He was third out of a field of 92 speakers.

Winter Concert Slated Monday At High School

Three Choral Groups Will Present Varied Program of Christmas Music

The Winter Concert of the high school choral groups will be presented Monday evening, Dec. 14, at 8 p.m. in the high school auditorium. Girls Glee Club, the Madrigal Singers, and the Concert Choir of the high school will perform for this concert.

Among numbers presented by the Girls Glee Club will be such popular favorites as "Let It Be," by Beatles' Lennon-McCartney, and "Sound of Silence," by Simon and Garfunkel. Modern Christmas favorites such as "Do You Hear What I Hear?" and "I Believe" will also be presented.

Madrigal Singers, a group of 16 select singers, will present mostly Christmas favorites such as "While Shepherds Watched Their Sheep," "Gesu Bambino," "Wassail Song," and "God Rest Ye Merry Gentlemen."

"The Peaceable Kingdom," a large and complicated modern piece by Thompson will be the presentation by the Concert Choir. The piece is long, and is divided into seven sections.

The gala concert will end with the joint choirs, accompanied by a brass ensemble, and the support of the audience in the singing of the Christmas classic, "Hallelujah Chorus."

Debaters Earn Two Trophies In State League

With the final rounds of the state debate league completed on Dec. 3, Chelsea's debate team has two new trophies added to their collection.

In the varsity competition, Chelsea debaters came in third, behind Parma Western and Greenhills school. The Bulldogs rated higher than teams from Monroe Catholic, Central, Brighton, Adrian, and Springport.

Novice debaters finished second, behind Greenhills, with Parma Western in third place, and Brighton, Catholic Central, Adrian and Romulus filling in the lower positions.

Trophies for Chelsea's performance were awarded following the final debates held last Thursday.

In the ABC League, with 16 debates in, and eight debates to go, as of Dec. 1, Chelsea had the lead, with a 14-2 record. Parma Western follows with a 12-4 record, followed by Jackson with a 10-6 record. Other schools in the league include Parkside, Lumen Christi, Springport, and Homer.

All rounds are presently in Cross Examination style. This means that between each of the first four speeches, the other team has an opportunity to ask questions of the speaker for the next three minutes, which the speaker must answer. This is more difficult than the standard debate format which features four 10-minute speeches, and four five-minute speeches. In Cross Examination format, the speeches are eight minutes, and four minutes, with a three-minute cross examination session between the eight-minute speeches.

At a cross examination style tournament held Saturday, Dec. 6, at Ann Arbor Huron school, Chelsea's varsity team went 2-6, while the novice debaters went 5-3 for the day. Dan Gaunt took the third place speaker's trophy. He was third out of a field of 92 speakers.

Police Have New Plymouth Patrol Car

Rotation time has come for the Chelsea Police vehicles! According to Police Chief George Meranuck, the newest addition to the Police fleet is a 1971 Plymouth, specially equipped police vehicle. The department gets a new car every year, replacing the two-year old vehicle which they have, up until this time, leased.

In the past, the chief indicated that the department always leased their cars. With the introduction of the 1970 automobiles, however, the village decided to purchase their vehicles, and trade them in every second year. At present the Chelsea police fleet is composed of a 1970 Ford, and the latest addition, the 1971 Plymouth.

The new car has many new police extras, according to Meranuck. It will take speeds up to 140 mph.

Village Registration Lapse Notices Sent

Notice of registrations recently mailed to voters in the Village of Chelsea apply specifically to general village elections, and should not be confused with elections in the township. Village Clerk Richard Harvey announced this past week. Notices are sent to those who have not registered and voted in a village election in the past two years.



SOCIAL SECURITY DAYS: Paul G. Schaible, Jr., (left) vice-president of the Chelsea State Bank, looks on as Carol Crane of Ann Arbor Social Security Office explains his computer printout record to Earl Whitney, 14285 Old US-12, during Social Security Days at the bank last Friday, Dec. 4. Whitney, a longtime Chelsea resident, had retired from his business at age 60. He has drawn Social Security checks since he was 62. He is also enrolled for both parts of Medicare, although he confessed to having always been well, and has never had to use it. Ann Arbor's Social Security Office maintains microfilm records of all beneficiaries in the State of Michigan, which are updated every six

months. They have access within 48 hours to information as recent as the current month's check. Chelsea State Bank and the Social Security Office co-sponsored the exhibit, with personal representatives at the bank on Thursday and Friday of last week, to explain the Social Security system to Chelsea residents. For those who were unable to be at the bank for the event, and who desire information or assistance, Mrs. Crane explained that they may call the Ann Arbor Office at 769-7100. Almost all Social Security business, including claims, may be handled by telephone, according to Mrs. Crane, thus avoiding the trip into the downtown Ann Arbor area.

Livestock Firm Withdraws Request for Zoning Appeal

Michigan Livestock Exchange formally withdrew their request for an appeal hearing on the decision of the Sylvan Township Zoning Board, Wednesday afternoon, Dec. 2, according to Reuben Lesser, secretary of the Zoning Board of Appeals.

Originally scheduled for Friday evening, Dec. 4, the appeals hearing would have reconsidered the request of the Michigan Livestock Exchange to have permission to build and operate a livestock auction on a parcel of land on the Norman Hinderer farm on South M-52, south of the Village of Chelsea.

Pressure from local people was one of the major factors influencing the decision of the Zoning Board.

Lesser indicated that Michigan Livestock Exchange officials had said that they were considering property in Sharon township, which

is directly south of Sylvan. Several 80-acre parcels of land are being considered by the company as a site for their future livestock auction.

Exchange officials gave no formal reason for withdrawing their request for an appeal.

Easter Lily Blooming At C. Ordway Home

An act of fate? Maybe so. Mrs. Carroll Ordway, 785 Dancer Rd., has an Easter lily, and a Christmas cactus blooming side by side. Mrs. Ordway received the lily as a gift at Easter time. She put it outside when summer came, and at summer's end, she noticed growth in the plant, so she took it in, and continued to water it. The cactus is a houseplant that Mrs. Ordway has had for a number of years. It normally blooms at this time of year.



NEW DRILL TEAM: Latest addition to the Chelsea athletic department, and a welcome change on the basketball courts during half-time are the girls in the Chelsea Drill Team. The drill team, which does dance routines to music, is led by Mrs. Philip Bareis. Miss Murphy, a student teacher at Chelsea High school, taught the girls their first routine, but since that time the girls have made

up their own. The girls will give a new routine each week. Rehearsals for the group are three times each week, with each rehearsal lasting close to two hours. Members of this year's team include, in front, from left, (kneeling), Debbie Akin, Donna Clark, Peggy Kraai, Eileen Evans. Standing are Karen Johnson, Jane Ewald, Kathy Stoll, Kris Buck, Karen Reynolds, and Judy Grau.

Established 1871 Telephone GR. 5-3531

The Chelsea Standard

Excellence Award by Michigan Press Association
1951-1952-1953-1954-1955-1956

Walter P. Leonard, Editor and Publisher

Published every Thursday morning at 300 North Main Street, Chelsea, Mich. 48118, and second class postage paid at Chelsea, Mich., under the Act of March 3, 1879.

ADDRESS CORRECTION REQUESTED

Subscription Rates (Payable in Advance)

| In Michigan: | Outside Michigan: |
|----------------------|----------------------|
| One Year \$4.00 | One Year \$6.00 |
| Six Months \$2.25 | Six Months \$3.50 |
| Single Copies \$.15 | Single Copies \$.20 |

Service men or women, anywhere, 1 year \$4.00

MEMBER National Advertising Representative: MICHIGAN NEWSPAPERS, INC.
257 Michigan Ave.
East Lansing, Mich. 48823

NATIONAL NEWSPAPER
Association - Founded 1888

Washington Report
by Congressman
MARVIN L. ESCH

In one of its most significant actions this year, the House in Washington has passed legislation which makes a major attack on the problems of unemployment and under-employment.

The Senate passed a similar version to my bill, The Comprehensive Manpower Act, earlier. A conference committee composed of House and Senate members are now attempting to resolve the differences in the two bills.

This bill is a major reform of the array of training programs that have grown in unco-ordinated fashion during the last decade. It pulls together into a streamlined package existing manpower training and employment services throughout the country. The most exciting advance is the Job Bank, where modern computer techniques are used for job placement.

Major provisions of the bill include:

(1) The identification of national pockets of unemployment resulting from plant shutdowns or changing economic conditions; the development of cooperative programs between national organizations and private industry, and the development of training programs for servicemen nearing release from military service.

(2) Development of a national job computer bank which will match the unemployed with available jobs. This is a unique feature of the legislation, which holds great promise.

Hay Is Big Crop

Washtenaw county farmers harvested 44,000 acres of hay in 1969, according to Phil Doctor of the Michigan Crop Reporting Service. Production amounted to 108,000 tons, an average of 2.45 tons per acre.

Uncle Lew from Lima Says:

DEAR MISTER EDITOR:

Out here in the country we still got room to cuss the cat, like the feller said, we ain't got neighbors closer than hollering distance and the water we drink is not enriched with vitamins and minerals and all them chemies that make water better fer you than plain water. But we know progress is bound to catch up to us sooner or later, probable soon er.

Discussing this situation during the session at the country store Saturday night, Ed Doolittle allowed that afore long picture winders fer homes is going to be as old fashion as front porches. The trouble is, Ed told the fellers, they ain't going to be nothing to see out a picture winder.

When you study it up one side and down the other, Ed said, people is mighty funny. They git in a rut, fall in behind the leader and stay there. They all wear the same style clothes and git the same kind of haircut. They all got to have the same style lampost, wagon wheel or milk can decorating the front of their houses, and they all got to have that picture winder.

body's got to have a picture winder is nice if you see a pretty picture when you look out of it. But in most of these rows of houses you see in town now, all you see when you look out the picture winder is another house just like yours, and a feller probable looking out his picture winder at you. If you're not so lucky, you'll look out at a busy street, a trash dump or a parking lot. But everybody's got to have a picture winder, cause everybody else has got one, Ed said.

Ed said he got to thinking about everybody wants to be like everybody else when he saw this piece in the paper where motels was padding their parking lots. They put a bunch of cars in their lots to give the idea that they have a lot of customers, so people looking fer a place to spend the night will figger it's a popular place. Ed saw where this has been ruled unfair practice in some states cause the padded lots give the places too much advantage over them that ain't got their lots full of cars. Ed said he didn't know they was euff parking places left in the country to pad the lots.

The fellers was general agreed with Ed that folks in this country git sidetracked, a lot trying to do, look and act like everybody else, but Bug Hookum was of the mind they is times when doing things together pays off. Bug had saw where more than 1,000 new groups of Alcoholics Anonymous was started around the world last year, pushing the number of AA units to 16,000, more than three times what they was 10 years ago.

Personal, Mister Editor, I agree with Bug that they still is room in this old world fer us to pull together to help one another.

Yours truly,
Uncle Lew.

Howell Livestock Auction

The Wise Owl Says Ship to Howell

SALE EVERY MONDAY, 2 p.m.

Phone 546-2470, Bim Franklin

Mason 677-8941

Market Report for Dec. 7

CATTLE

Steers and Heifers:

Choice, \$27 to \$28.20

Good, \$25 to \$27

Ut.-Std., \$21 to \$24

Fed Holsteins, \$23 to \$25.50

Cows:

Heifers, \$21 to \$24

Ut.-Comm., \$19 to \$21

Canner-Cutters, \$16 to \$19

Fat Yellow Cows, \$15 to \$17

Bulls:

Heavy, \$26 to \$28

Light and Common, \$22-\$26

Calves:

Prime, \$44 to \$48

Good-Choice, \$40 to \$44

Cull-Med., \$20 to \$25

Heavy Deacons, \$30 to \$35

Light Deacons, \$25 to \$30

Feeders:

Good-Choice, \$28 to \$34

Common-Med., \$22 to \$28

Dairy Cows, \$240 to \$380

HOGS

Butchers:

190-lb. to 240-lb., No. 1, \$16.50 to \$17.70

190-lb. to 240-lb., No. 2, \$15.50 to \$16.50

240-lb. and up, \$14 to \$15.50

Pigs:

Fancy Light, \$12 to \$12.50

300-lb. to 500-lb., \$11 to \$12

500-lb. and up, \$10 to \$11

Born and Stags:

All Weights, \$12 to \$14

Feeder Pigs:

Par Head, \$8 to \$12

CHEEP

Wanted Slaughter Lambs:

Chick-Prime, \$24 to \$26.50

Good-Utl., \$20 to \$24

Wool:

Slaughter, \$5 to \$8.50

Feeder Lambs:

All Weights, \$22 to \$25

... SANTA FOR THE KIDS

PRESENTS FOR ALL THE RELATIVES

HAVE TO GET THE HOUSE READY FOR HOLIDAY COMPANY...

JUNIOR'S COSTUME FOR THE SCHOOL PLAY-

WOULD DAD PREFER A NEW SHAVER OR AN ELECTRIC SAW?

WONDER IF THE GIRLS WOULD AGREE TO CALLING OFF BRIDGE CLUB FOR DECEMBER?

SHOULD WE HAVE TURKEY FOR CHRISTMAS DINNER?

GET FRUITCAKE INGREDIENTS

DECEMBER THOUGHTS

★ MICHIGAN MIRROR ★

By Elmer E. White, Secretary, Michigan Press Association

TV Not All-Powerful

When listening to many political commentators these days, one gets the idea television is an all-powerful persuader in the modern political campaign.

"Make up some good, slick advertisements and then buy all the tube time you can to air them," goes the theory of political persuasion they are expounding.

In the midst of all this there comes at least one successful candidate who didn't put all his eggs in the television basket this year. In fact, aides to the candidate say another instrument they used was the "single most effective advertising device" they had.

That candidate is Gov. William G. Milliken, and the instrument which he used so successfully was an eight-page, color rotogravure section which was inserted in the state's larger newspapers just before the election.

Milliken forces printed and distributed 2.5 million copies of the eight-page, tabloid size piece of literature.

Chances are, you saw a copy of it, with a color portrait of the governor on the cover, inside pages devoted to brief biographies of the Milliken family and running mate James Brickley, and a section outlining their positions on issues ranging from education to crime.

Mill Creek Committees Gathering Data

Mill Creek Research Council Board of Directors and committees concerned with the future study of the proposed Mill Creek Park by the Huron Clinton Metropolitan Authority, met Dec. 3, at the home of Leonard McCalla.

Plans are being made for local residents to attend the Dec. 10 meeting of the Huron Clinton Metropolitan Board of Commissioners meeting. This December meeting will be the Authority's regular monthly meeting, and there will not be time to discuss the park proposal. However, the research council hopes to request time on the agenda of their Jan. 14 meeting. Research Council hopes local people will plan to attend.

Committees are busy it was reported at the meeting. Several carloads of people had planned to visit the Stoney Creek Park area on Sunday, Dec. 6, as a part of their effort to learn more about the park. The Stoney Creek park is most like the proposed park on Mill Creek. The purpose of the visit is to see how it has affected that area.

Mill Creek Research Council members are circulating petitions of opposition to the Huron Clinton Metropolitan Authority's plans for a park on Mill Creek in Lima township.

MONEY TROUBLE?

ONE PLACE TO PAY!

Credit Management Service

662-2565

215 South Fifth Ave.

Ann Arbor

State Licensed and Bonded

"A lot of people knew the governor had a lot of programs on which he was working," explains one aid.

"But they didn't know the 'humanizing' aspects of him—his war record, his family and things like that."

"We also had the problem that his record was spread over a lot of areas, and you just can't lay that in front of the voter in a 30-second television spot," he said.

The supplement was printed on a crash basis after it evolved from staff meetings. The printing was held up one week because Milliken didn't like the first version put together and a quick reworking job had to be done.

But the final result pleased Milliken and his aides and, they feel, was the "single most effective advertising device they used."

"Television is the big glamour item right now," said another aid. "I think some people have forgotten the purpose of political advertising whatever form it takes."

"That purpose is to communicate with the voter, to catch his attention and get your message over to him," he said. "If you do a more effective job of that than your opponent, you're probably going to win."

Beebe Fights On

She may be out of her seat in the Michigan State Senate, but she is the only woman who has sat in

that body the last four years isn't going to roll over and play dead.

"I may die with my boots on, but I won't quit," vows Mrs. Lorraine Beebe, a Dearborn Republican whose defeat was attributed mainly to her staunch support of abortion law reforms.

"They can't keep me quiet by voting me out of the Senate," she said.

Mrs. Beebe says she'll concentrate on the women's rights field, possibly by co-ordinating the various groups in Michigan and channeling their efforts together.

"I've gained a lot of knowledge about the way things really work in the legislature in the past four years, and I certainly hope to use this experience," she said. "I want to tell the women of Michigan what's happening here."

Mrs. Beebe feels her defeat was "a real slap to the women of this state."

"It is totally unfair to have all-male Senate telling the people of this state what they can eat, how much they can get paid and how fast they can drive as it would be to have an all woman Senate doing those things," she said.

"I believe that in their hearts, women are seeking some form of liberation," she said. "I can sense a restlessness, an uncomfortable-ness in them. There's a big world out there that needs the talents and abilities of women. That is why Beebe isn't quitting."

JUST REMINISCING

Items Taken from the Files of The Chelsea Standard

4 Years Ago...

Thursday, Dec. 15, 1966—A robbery occurring at Schumm's restaurant, 16290 Manchester Rd., is still under investigation according to the Chelsea Police Department. The break-in is believed to have taken place sometime after 4:15 a.m. on Monday, Dec. 12. Fritz Schumm, owner of the restaurant reported that \$2,400 in cash and checks, along with several cases of the better grades of liquor was stolen. Tower Shell Service Station, located next to the restaurant, also fell victim to the burglars. Missing from the station was a tool box full of tools, and 150 packages of cigarettes. Several packs of cigarettes were dropped in an obviously hasty departure.

Charles S. Cameron Chapter of the National Honor Society initiated 19 new members Friday afternoon, Dec. 9, in the High school auditorium. Three of the new members are seniors, Chuck Fredette, Sandy White, and Tim Meininger. Sixteen juniors were inducted, Sheryl Peppers, Mike Grob, Carol Hepburn, Sue Knickerbocker, Debbie Kuhl, Shari Stoffer, Becky Clemons, Lanny Patrick, Sandy Eisele, Linda Koch, Kathy Fuels, Shirley Howard, Buckingham, Janice Buck, Joanne Fischer, and Sandy Knoll. Present members include Bonnie Erskine, Tina Lindauer, Jan Koenig, Cheryl Gran, Elaine Paul, Elizabeth Bower, Arlys Wiseman, Cindi Hercules, Sue Gardner, Anita Wenk, Mary Arnett, Ellen Merkell, Sharon Sutter, Cathy Taylor, Kim Flintoft, Eric Batzdorfer, Larry Porath, Bob McDougall, and Charles Winans.

At the annual meeting of the Chelsea Community Fair Association, Reuben Lesser was re-elected president. The meeting was held Tuesday, Dec. 4, in the Municipal Building. Other officers elected are William Pritchard, first vice-president, Charles Lane, second vice-president, Lloyd Grau, secretary, and H. T. Moore, treasurer. Elected to serve on the board of directors for three years were Ezra Lesser, Everett Van Riper, and John Brooks.

Kiwanis Club of Chelsea held its annual Christmas party, and Ladies Night in the social center of the Methodist church Monday evening. Approximately 90 Kiwanians and guests were present.

Address of the evening was delivered by the Rev. Edwin Weiss, who is serving as associate superintendent of the Methodist Home, until the Feb. 1 retirement of the Rev. M. J. Betz, after which he will become superintendent. The Rev. Weiss gave an inspirational talk on the real meaning of Christmas.

Washtenaw County Board of the National Foundation of In-

fantile Paralysis has approved a 1967 March of Dimes campaign goal of \$46,000, board chairman Mrs. James A. Nichols disclosed this week. The target figure is nearly 20 percent below the \$57,000 sought in January this year, but Mrs. Nichols indicated that the local chapter was counting on a substantial over-subscription to meet the county's total need for polio funds. The 1966 drive exceeded its goal by more than \$16,000. Mrs. Norman Ratcliffe, and Mrs. Charles Popovich, Jr., are in charge of Chelsea's campaign.

At the annual meeting of the Chelsea Community Fair Association, Reuben Lesser was re-elected president. The meeting was held Tuesday, Dec. 4, in the Municipal Building. Other officers elected are William Pritchard, first vice-president, Charles Lane, second vice-president, Lloyd Grau, secretary, and H. T. Moore, treasurer. Elected to serve on the board of directors for three years were Ezra Lesser, Everett Van Riper, and John Brooks.

Kiwanis Club of Chelsea held its annual Christmas party, and Ladies Night in the social center of the Methodist church Monday evening. Approximately 90 Kiwanians and guests were present. Address of the evening was delivered by the Rev. Edwin Weiss, who is serving as associate superintendent of the Methodist Home, until the Feb. 1 retirement of the Rev. M. J. Betz, after which he will become superintendent. The Rev. Weiss gave an inspirational talk on the real meaning of Christmas.

24 Years Ago...

Thursday, Dec. 12, 1946—Clara Miller, daughter of Mrs. Chester Miller, and the late Mr. Miller, has been chosen by the class of 1947 to receive the DAR award. This award is based upon dependability, service, patriotism, and leadership. During her four years in high school, she has been an active member of many school activities.

Chelsea basketball squad opens its home season by playing host to the Manchester Dutchmen on Tuesday, Dec. 17, at 7:15 p.m.

First string for the Bulldogs this year will be as follows: Guards are J. V. Burg, R. Barlow, Jim Miller, and Doug Vogel. Centers will be Bob Daniels, and Jack Wellnitz. E. Eisele, R. Knickerbocker, Loren Munro, and Charlie Popp will play forward for this year's team.

Lewis Bernath has purchased the interest of the late LeRoy Mayer in the Chelsea Electric Sales & Service store which he and Mr. Mayer opened as partners last year, and is now sole owner of the business. Bernath has been connected with electrical sales and service in Chelsea for the past 17 years, and was employed for a number of years by his uncle, the late E. J. Claire, in the E. J. Claire & Son, store.

Peter Kinsey, Sr., has arrived in England on the liner Queen Elizabeth. Kinsey plans to spend a few weeks in England, visiting his brother, whom he has not seen in 40 years, and other relatives and friends in Stockport.

34 Years Ago...

Thursday, Dec. 10, 1936—Chelsea chapter of the FFA will sponsor a Father and Son Banquet on Tuesday, Dec. 15, at 7 p.m. in the Chelsea public school gymnasium. Dr. Bryam of Michigan State College, Department of Education, will be the principal speaker. Mrs. McKernan will direct the kitchen activities, assisted by Mrs. Gilbert, Mrs. Bentler, Mrs. Bristle, Mrs. Alber, Mrs. Martin, Mrs. Stoffer, Mrs. Prinzing, Mrs. Niehaus, Mrs. Robbins, and others. High school girls will serve the banquet. Robert Gilbert, president of FFA will give the welcome, while Alton Koenigter will be toastmaster. Jerry Niehaus will lead songs. Mark McKernan will lead the toast to the dads, while Roy Ives will toast the sons.

PLAN A CAREER.
Take Courses at



Washtenaw Community College

Prepare for YOUR Future

At

WASHTENAW COMMUNITY COLLEGE

- | | |
|---|--|
| <input type="checkbox"/> Agri-Business | <input type="checkbox"/> Management |
| <input type="checkbox"/> Business & Industrial | <input type="checkbox"/> Food Service Technology |
| <input type="checkbox"/> Management | <input type="checkbox"/> Marketing |
| <input type="checkbox"/> Data Processing | <input type="checkbox"/> Medical Office Specialist Program |
| <input type="checkbox"/> X-ray Technology | <input type="checkbox"/> Technical-Commercial Art |
| <input type="checkbox"/> Dental Assisting | <input type="checkbox"/> Auto Body Repair |
| <input type="checkbox"/> Inhalation Therapy | <input type="checkbox"/> Automotive Technology |
| <input type="checkbox"/> Architectural Drafting | <input type="checkbox"/> Industrial Drafting |
| <input type="checkbox"/> Electronics-Engineering | <input type="checkbox"/> Electro-Mechanical Technology |
| <input type="checkbox"/> Technology | <input type="checkbox"/> Fluid Power Technology |
| <input type="checkbox"/> Numerical Control Technology | <input type="checkbox"/> Mechanical-Engineering Technology |
| <input type="checkbox"/> Metallurgical Technology | <input type="checkbox"/> Toolroom Machine Operation |
| <input type="checkbox"/> Educational Assisting | <input type="checkbox"/> Welding & Fabricating |
| <input type="checkbox"/> Office Occupations | |
| <input type="checkbox"/> General Education | |

PRE-REGISTRATION FOR SPRING 1971 NOW IN PROGRESS

Note: New student applications have increased over previous years. You can guarantee your place in classes by pre-registering NOW.

For Further Information - Contact

WASHTENAW COMMUNITY COLLEGE

CALL: 971-6300,
Extensions 421 or 422

OR

MAIL THIS AD, after checking the appropriate box. Please include your name and address.

To: Washtenaw Community College
P. O. Box 345, Dept. GS
Ann Arbor, Michigan 48107

Name _____

Address _____

Phone _____

Appliance Giving means Easier Living!

Major Household Appliances By Frigidaire

REFRIGERATORS
FREEZERS
RANGES
WASHERS
DRYERS

SPECIALLY PRICED TO SAVE YOU MANY DOLLARS ON CHRISTMAS TIME PURCHASES

SMALL APPLIANCES Priced To Save You Money!

Come in and see us today while selections are good!

MEABON'S TV, Furniture & Appliances

1170 M-52 South, Chelsea Phone GR 5-5191

ACT Exams To Be Given at Chelsea High

ACT's, or the American College Testing examinations will be given in the Chelsea High school auditorium Saturday morning, Dec. 12. According to Chelsea High school counselor George Bergman, more than 100 students are expected to attend this testing session, from Chelsea and other area high schools. This is twice as many students as have participated in these tests in the past years.

Students are advised to be at the high school as close to 8 a.m. as possible. Bergman also indicated that two college representatives will be at Chelsea High school next week to talk to prospective college students. Monday, Dec. 14, representatives from Albion College and the Lansing Business University will be in the Board of Education room. Albion will visit the school during the third hour, and Lansing Business University will occupy the room during the fifth hour.

DIABETES PILL

The Food and Drug Administration (FDA) plans to advise doctors that the most widely used diabetes pill does little good and may cause fatal heart disease. The drug is tolbutamide, made by Upjohn Co., of Kalamazoo, under the tradename Orinase. It is widely prescribed for mild diabetes mellitus cases contracted during adulthood.

DEATHS

Mrs. Ernest Packer

Chelsea Woman's Mother
Dies at Ann Arbor Hospital

Mrs. Ernest (Jennie M.) Packer, 78, of 375 Rose St., Ann Arbor, died Saturday, Dec. 5, in St. Joseph Mercy Hospital.

Born Feb. 10, 1892, in Hicksville, O., she was the daughter of Ross and Ida Wilder Eaton. She was preceded in death by her husband, Ernest Packer, in 1963.

Survivors include five daughters, Mrs. Max (Helen) Dyer of Pinckney, Mrs. Harold (Marjorie) Adams of Chelsea, Mrs. James (Florence) Warden of Dexter, Mrs. Nelson (Georgia) Shehan of Whitmore Lake, and Mrs. Louis (Jean) Robinson of Ann Arbor; five sons, Ross of Ann Arbor, Ernest of Detroit, Earl and John of Pinckney, Donald of Fowler; two brothers, Harry Eaton of Manchester, Donald Eaton of Boyne City; three sisters, Mrs. Phyllis Koernke of Manchester, Mrs. Myabell Randolph of West Unity, O., Mrs. Beatrice Jones of Mason; 24 grandchildren and 11 great-grandchildren.

Funeral services were held at 2 p.m. Tuesday, Dec. 8, from the Swarthout-Lamb Funeral Home with the Rev. Henry Reinwald officiating. Burial followed in the Pinckney Cemetery. Memorial contributions may be made to the Kerry Medical Foundation. Envelopes are available at the funeral home.

Dan E. Bingham

Former Chelsea Woman's
Husband Dies in Ypsilanti

Dan E. Bingham, 1520 Devon St., Ypsilanti, died Sunday, Dec. 6, at the University Hospital, after a lingering illness. He was born Feb. 24, 1937 in Prestonsburg, Ky., the son of Alex and Viola Bingham Bingham. He moved to Ypsilanti in 1966.

He married Barbara Williams, Oct. 14, 1967, in Ann Arbor. He was a member of the Horn Chapel Methodist church of Prestonsburg, Ky., and of the Amalgamated Meat Cutters and Butchers Local 539. He was employed by the Kroger Co. as a meat cutter.

He is survived by his widow, Barbara, of Ypsilanti, one son, Danny Jeff, of Auxier, Ky.; his mother, Mrs. Viola Bingham of Prestonsburg, Ky.; three brothers, Joe Alex, of Middlesboro, Ky.; Tom Jeff, of Tuscon, Ariz.; and Jim of Ypsilanti. Also surviving are two sisters, Mrs. Walter (Lena) Carter of Ashland, Ky.; and Mrs. Ollie (Bertie) Lowe of Pikeville, Ky.; several aunts, and uncles, nieces, and nephews. His father and sister preceded him in death.

Funeral services were held Wednesday, Dec. 9, in Prestonsburg, Ky. Burial was in the Alex Bingham cemetery. Arrangements were by the Fontana Funeral Home, 2400 Carpenter Rd., Ann Arbor. Memorial contributions may be made to the Kidney Disease Foundation or the Diabetes Association.

Mrs. William Kuebler

Dies Monday at Medcenter
Following Lengthy Illness

Mrs. William L. (Clara) Kuebler, 81, formerly of 242 Adams St., died Monday, Dec. 7, at the Chelsea Medcenter after a lengthy illness.

She was born Oct. 18, 1889 in Francisco, Jackson county, a daughter of John and Mary Gruner Koch. She was married to William Kuebler on March 14, 1918. He preceded her in death in Nov. 1967.

Mrs. Kuebler was a member of St. Paul United Church of Christ, and the Women's Fellowship of the church.

Surviving are two daughters, Mrs. Robert (Kathryn) Michael and Mrs. Charles (Jean) Knorr, both of Ann Arbor; six grandchildren and three sisters; Mrs. Emanuel (Sarah) Bahmiller, Mrs. Julius (Mary) Niehaus and Miss Amanda Koch, all of Chelsea, as well as several nieces and nephews.

Funeral services were held at 11 a.m. today (Thursday), Dec. 10, at the Burghardt Funeral Home with the Rev. Warner H. Siebert officiating. Burial followed in Oak Grove Cemetery. Those wishing to do so may make memorial contributions to either the Michigan Heart Fund, or St. Paul Church Memorial Fund.

(Additional Deaths
on page eight)

SUPERMOUSE

Tiger shortstop Cesar Gutierrez was named "Supermouse" at Phoenix in 1969.

Cager of the Week



HOWIE TREADO, senior at Chelsea High school, is co-captain of this year's varsity basketball team. The Bulldog forward has played basketball for the team for three years. Howie is vice-president of the student council, and vice-president of the senior class. He is a member of the Varsity Club, and the Ski Club. Following graduation, the senior will attend either Michigan State University or Central Michigan University. He has been accepted by both schools. Howie is planning to major in business administration, and wants to be able to take a graduate degree. He lives with his mother, Mrs. H. Treado, at 129 South St. He has three sisters, Reatha, Annie, and Kathleen, and one brother, Timmy.

Incentive Payments To Be Made In April on 1970 Crop Wool Sales

Payments will be made beginning about the first of April on marketing of wool and mohair in 1970, and reported by Jan. 31, 1971. So reports Raymond Girdach, chairman of the Washtenaw County Agricultural Stabilization and Conservation (ASC) Committee, who reminded producers that the 1970 marketing year under the wool and mohair program ends Dec. 31.

Wool payments are based on the difference between the incentive price (72 cents per pound for shorn wool marketed in 1970) and the average national price for markings during the year. Wool and mohair sales made after Dec. 31, 1970, will not be eligible for payment until early 1972.

Incentive payments are made through ASCS county offices to all producers who file applications and present the necessary sales receipts and other records.

Girdach reminded producers that sales documents must show all details of the sale were completed during the current marketing year—including passing title to the buyer. There must also be a record showing either actual delivery or transfer of control of the wool or mohair to the buyer. The buyer's total purchase price must be clearly stated, also.

Proof of ownership for at least 30 days is an important requirement, the ASC committee chairman said.

To be eligible for payments, producers must own for at least 30 days the livestock from which the wool or mohair was shorn and the unshorn lambs on which they apply for payment. Records must be presented which clearly

More vocational industrial education teachers in Michigan public schools are graduates of Western Michigan University than of all other institutions combined.

YES

WE ARE MAKING
LONG-TERM FARM
REAL ESTATE
LOANS

SEE US



Ann Arbor, Mich. 48103
P. O. Box 1006
Ph. 769-2411 8645 Jackson Rd.

Sgt. Clifton Loveland Chosen For Crew in SAC Competition

U. S. Air Force Sergeant Clifton D. Loveland, son of Mr. and Mrs. LeRoy D. Loveland of 1001 Grass Lake Rd., Grass Lake, has been selected to participate in the Strategic Air Command's (SAC) elite combat competition at McCoy AFB, Fla., Nov. 15-20.

Sergeant Loveland is an air-borne radio operator on the hand-picked team that will support the B-52 Stratofortress bomber crew from the 320th Bomb Wing at Mather AFB, Calif. He was selected on the basis of his technical skill, proficiency and outstanding performance.

Fifty-five SAC aircraft and crews, along with three Royal Air Force (Great Britain) teams, will be competing in the "world series of bombing and navigation."

SAC's newest bomber—the General Dynamics FB-111—is making its debut in the competition. Two of the supersonic bombers and two man-crews will match their bombing and navigation skill against 24 B-52, 29 KC-135 Stratotankers and three British delta-wing Vulcan bomber crews.

Each bomber team will fly two scored missions and will be judged on, navigation, coupled with simulated bombing from both low and high altitudes. Tanker crews will fly one mission, vying only for navigation honors.

The crew with the highest point total in combined bombing and navigation will win the coveted Fair-

child Trophy. The Saunders Trophy will go to the tanker team compiling the most points in navigation.

"Bombing targets" for the bombers will be located near Wheatley, Ark., and Arcadia, La., and accuracy of simulated bomb releases will be computed by mobile radar scoring units.

Sergeant Loveland graduated in 1965 from Grass Lake High school and attended Jackson Community College.

His wife, Hazel, is the daughter of Mr. and Mrs. Virgil F. Walz of 3940 Portage Rd., Grass Lake.

FAMILY MAN

Tiger Outfielder Willie Horton is the youngest of 21 children.

MIKE'S TV ANTENNA SERVICE

Motorola Automotive
Sound Systems
Winegard Home Electronics
TV Antenna Systems

Insurance Claims

For Free Estimate, Call
Pinckney 878-3258
or 769-0130

SPECIAL

thru Wednesday, December 16, 1970

BRAZIER BAR-B-Q & FRIES

54¢

Home of Fine Brazier Foods



brazier.

901 S. MAIN ST., CHELSEA PHONE 475-2677

COUPON

SAVE

YULE COUPON

1 BOX CHRISTMAS ORNAMENTS

Your Choice

| CASH PRICE | With 4 Pages Pantry Stamps |
|---------------|-------------------------------|
| 89¢ | 39¢ |
| \$1.29 | 59¢ |
| \$1.49 | 69¢ |

LIMIT: ONE BOX PER CUSTOMER

COUPON

COMPLETE CHRISTMAS TRIM DEPT.

Nationally Advertised Toys, Dolls
at REDUCED PRICES

OPEN 6 A.M. TILL 11 P.M. EVERY DAY

GALLUP - SILKWORTH PUMP & PANTRY

295 S. Main St., Chelsea Phone 475-7051

Beautiful Gifts

...TO
FILL
YOUR
GIFT
LIST!

for DAD

for MOM

for CHILDREN

for GIRLS

for BOYS

for BABY

The Selection Is Great!

Shop in a Friendly Store

P.S. Just received new stock of

Men's Romeos and Felt House Slippers

DANCER'S

Chelsea's Friendly Dept. Store

Jiffy market

BIG ENOUGH TO SERVE YOU.....SMALL ENOUGH TO KNOW YOU!

Corner of SIBLEY & WERKNER RDS....CHELSEA, MICHIGAN

7 AM - 10 PM
OPEN 7 DAYS A WEEK
PHONE 475-5701

COMPLETE SUPER MARKET

SALE PRICES EFFECTIVE WEDNESDAY, DEC. 10, THRU SUNDAY, DEC. 13, 1970.

RISDON'S

HOMOGENIZED MILK . gal. 88¢

CIGARETTES . . . Everyday Low Prices 39¢ \$3.39 Ctn.

OPEN EVERY DAY 7 a.m. to 10 p.m.

CHRISTMAS TREE LOT By Chas. Smith & Sons

COMPLETE STOCK

BEER

THROWAWAYS
CANS OR BOTTLES

NOTE!!

Beer and Wine will be priced
the same as Milk, Bread,
Cigarettes, Gas and other
merchandise—

AT FAIR
SUPERMARKET PRICES

COMPLETE STOCK

of
WINES-CHAMPAGNE
COLD DUCK - COLD TURKEY
from
MICHIGAN - ITALY
GERMANY - DENMARK
CALIFORNIA - ELSEWHERE

MARATHON GAS PUMPS

TOP QUALITY GAS AT EVERYDAY LOW PRICES

REGULAR

33.9¢

Per Gallon
Includes
All Taxes

OPEN DAILY

7 a.m. until 10 p.m.
Drive A Little and Save A Lot!
JIFFY MARKET ACROSS FROM DANA PLANT

PREMIUM

37.9¢

Per Gallon
Includes
All Taxes

Ads
Taken
Till 5 p.m.
Tuesday

IT'S EASY TO
BUY-SELL-RENT-
HIRE & FIND WITH

WANT ADS

Just
Call
GR 5-3581

WANT ADS

The Chelsea Standard

WANT AD RATES

PAID IN ADVANCE—All regular advertisements, 50 cents for 25 words or less, each insertion. Count each figure as a word. For more than 25 words add 2 cents per word for each insertion. Blind ads or box numbers add .85 extra per insertion.

CHARGE RATES—Same as cash in advance with 15 cents bookkeeping charge if not paid before 5 p.m. Tuesday preceding publication. Pay in advance, send cash or stamps and save 15 cents.

DISPLAY WANT ADS—Rate, \$1.10 per column inch, single column width only. 8-point and 14-point light type only. No borders or bellface type.

CARDS OF THANKS or MEMORIALS—Single paragraph style, \$1.00 per insertion for 50 words or less; 2 cents per word beyond 50 words. Minimum, 1 inch.

COPY DEADLINE—5 p.m. Tuesday week of publication.

FOR SALE — Two 7.50x16 nylon Hi-Miler Goodyear truck, snow tires, 8-ply mounted on Dodge split rim wheels, 1/2 price. Call after 5 p.m., 475-8467. -25

Chelsea Cub Scout Christmas Trees

To be sold in two locations. First lot, Tobias Peterson, 705 S. Main St.; second lot, between the Library and Merkel's furniture, at the back. If the lot is unattended and you wish to pick your tree, pay at Merkel's or the home of Tobias Peterson. Lots are tended from 5 p.m. to 9 p.m. Monday through Friday, and Saturday, 9 a.m. to 5 p.m. -27

For Sale

LARGE OLDER farm house, 4 bedrooms, 4 miles north of Dexter, one acre of land.

13 VACANT ACRES, near Chelsea, rolling, trees and pond possibilities. VA 7694.

10 VACANT ACRES with large pond on black-top road. Terms VA 7773.

1/4 ACRE, ready to move mobile home on, well, septic, electricity, culvert are all in, at M-36 near Gregory. MHS 7816.

Howell Town and Country, Inc.

878-1177

CARLE WIDEMAN, Local Rep.
Phone 426-3758 -26

WANTED

TYPIST

Accurate, 55-60 wpm.
Apply in Person

Chelsea Standard

300 N. Main St. Ph. GR 5-3581

Headquarters for
Rubber Footwear
Famous Ball Band

Foster's Men's Wear -22tf



BECKER MEMORIALS

6033 Jackson Road
ANN ARBOR, MICHIGAN

Friendliness

We serve with
the devotion
of a
true friend.

Staffan Funeral Home

"Funeral Directors for Four Generations"

124 PARK STREET PHONE GR 5-4417

WANT ADS

BOARDING, trimming, training. Town and Country Kennels, Jackson Rd. at Baker. NO 3-7206. 7tf

MOR HEATING & Cooling Co.
Air conditioning, hot water, steam boilers, warm air furnaces. Sales and service. Ph. 498-2853, Gregory. 47tf

Gem Travel Trailers and Campers

PICK UP COVERS

4" ————— \$100.00
26" ————— \$179.00 and up

Triangle Sales
Chelsea 475-4302 40tf

GLOGGED SEWER

Reynolds Sewer Service

We Clean Sewers Without Digging
Drains Cleaned Electrically
FREE ESTIMATES
2-YEAR GUARANTEE
Phone Ann Arbor NO 2-5277
"Sewer Cleaning Is Our Business—Not a Side Line" -38tf

SEE US for transit mixed concrete, Klump Bros. Gravel Co. Phone Chelsea 475-2530, 4920 Loveland Rd., Grass Lake, Mich. x40tf

CHRISTMAS TREES

Pine and Spruce

CUT YOUR OWN

Open week-ends Dec. 12-13, and Dec. 19-20.

BUETLER'S

Next to 1805 Pierce Rd., Chelsea. -26

SUPPER

Shoppers—Get your
Supper at the
Methodist Church Social Center

Home-made hot sandwiches, soups, and baked goods.

Prices range from 25c to 65c
Serving from 4:30-8:00 p.m.

**Thursday, Dec. 17
and Friday, Dec. 18** -26

Mass Sale Is On Through December

Admiral TV and Stereo-Radio
All on Display Now.

Also a good selection of used TV's
Color and Black and White

Service on All Models

Porter's TV
212 Buchanan St., Chelsea
Phone 475-8380 -27

RENT A NEW FORD

\$7.00 Per Day & 7c Per Mile

We also have
Special Weekly, Week-End
and Monthly Rates.

Open Mon., Wed., Thurs. Till 9:00
All Day Saturday

PALMER FORD
SINCE APRIL 1912
475-3271 -23tf

WANT ADS

COON HOUNDS, for sale, blue tick, 2 1/2 years old, 2 black and tan, red boned, 4 years old. Thoroughbred hounds, fully trained. 475-7357. x26

FOR SALE — 1965 Malibu, standard transmission, good condition. Phone 475-2842, after 5:30 p.m. x25

FOR SALE — Artificial Christmas tree, green Scotch pine, 7' tall. Best offer. Phone 475-2741. x25

FOR SALE — Used Red Devil paint shaker, with timer. In good condition. \$35. Merkel Brothers. x25

USED CAR BARGAINS

'70 Mustang
'70 LTD 4-dr.
'69 Thunderbird (2)
'68 Ford (3)
'68 Impala
'67 Ford Squire/Wagon
'67 Mustang
'66 Comet
'66 Mustang
'66 Ford (3)
'65 Chev 4-dr.
'65 Ford Wagon (2)
'64 Corvair
'63 Ford Convertible
'61 Corvair

TRUCKS

'67 Ford 1/2-ton
'66 Chev 1/2-ton
'65 Ford 1/2-ton

Open Mon., Wed., Thurs. Till 9:00
All Day Saturday

PALMER FORD
SINCE APRIL 1912
475-3271 -25tf

Contractor Servicing Chelsea, Dexter and Manchester Areas

Complete Home Remodeling Inside and Outside

Specializing in extra living space, recreation rooms, kitchens and paneling. Installing all aluminum products, 6" eavestroughs, custom-made awnings, windows and doors, aluminum siding in many selected colors and styles.

Please Call

DALE COOK
Chelsea 475-8863 -20tf

EVINGER REAL ESTATE

Farms Lake Property Residential Commercial

Phone 426-3236 or 426-8892

LISTINGS NEEDED -x23tf

Chelsea Area Homes

22-ACRE FARM — 5-bedroom remodeled home, barns, only 20 minutes to Ann Arbor, Chelsea schools.

IMMEDIATE OCCUPANCY — Charming country home, beautiful wooded setting, 1.8 acres, 4 bedrooms, family room, fireplace, attached garage. Blacktop road, Chelsea schools. Priced to sell.

VILLAGE OF CHELSEA — Early American two-story, 2-bedroom, 2 1/2-car heated garage, large living room, utility room, dining room. In very nice condition. Priced to sell, \$22,500.

VILLAGE OF CHELSEA — Immaculate condition, beautiful Cape Cod. 2 fireplaces, extra large lot with woods, family room, 2 1/2-car attached garage, 3 bedrooms.

ALL-BRICK RANCH HOME — 1.5 acres, family room, fireplace, 3 bedrooms, 2 1/2-car attached garage. Quality construction throughout. Blacktop road. Grand entrance hall, dining room. Chelsea schools.

FIVE BEDROOM — 2 fireplaces. Immaculate condition. Study, family room, dining room, open staircase. \$33,000.

SIX BEDROOMS — Large yard, excellent location for schools, 3 full baths, 10 years old. Priced to sell.

FOUR BEDROOMS — 2 full baths, deep back yard, nice spot for garden, newly remodeled kitchen. Only \$24,500.

3- and 10-ACRE BUILDING SITES — Woods, stream, rolling land, Dexter and Chelsea schools. Excellent location. 15 minutes from Ann Arbor.

NO RENTALS

R. D. Miller REAL ESTATE

Real Estate Broker
475-7311

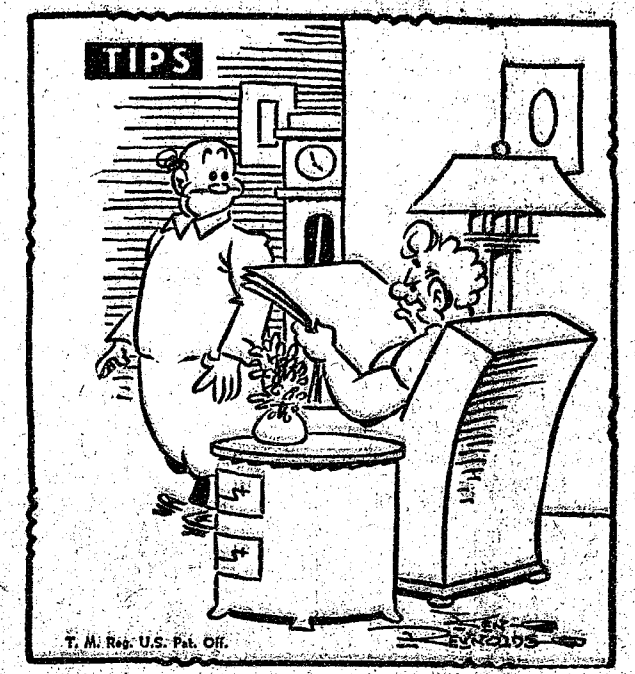
H. W. Buss
phone 475-8910
15775 Cavanaugh Lake Rd.
Chelsea, Mich.
Post Office Box 381

List your property with Miller—fast, efficient service. -24tf

Eibler, Frisinger & St. Amour REALTORS

Chelsea 475-8681 Dexter 428-4659

Evenings Call
George Frisinger 479-4161
Paul Frisinger 475-2621
Herman Koehn 475-2613 -24



"Here's something else in the Standard Want Ads I'm getting you for Christmas—that I want!"

WANT ADS

CHRISTMAS TREES — Cut your own. Any size. \$5.00. Ozapla's Orchard, 1817 Bank Rd. Morningside and week-ends only. x26

PART TIME HELP — Man or woman, early morning delivery of the Detroit Free Press. Both Dexter and Chelsea areas. Reliable car needed. 483-2351, between 7 and 10 a.m., or 668-6911, 9 a.m. to 3 p.m. x27

CHRISTMAS TREES — Scotch Pine and Spruce. \$4. Ready cut, or you cut. Free coffee, Santa and wagon rides on week-ends. Fodor's Tree Farm, 3758 Burtch Rd., 5 1/2 miles south of Grass Lake, 3ed Lake. x26

WILL THE TWO LADIES who took two pink washers full of clothes from the coin-operated laundromat on S. M-52 in Chelsea, and drove off in a blue car, please bring them back, and give them to the manager? No questions will be asked. Thank you. -25

FOR SALE — Double 16 ga. La. Fever shotgun, in good condition; mec. 400 trap loader with primers, shot and powder, plus approx. 1,000 cases, dies for 12-16-20 ga. Ph. 475-8330. -25

Protect Your Carpeting with Plastic Tenax Matting

27 inches wide. Will not slip on floor. In clear, gold and green. Per lineal ft. ————— \$1.29

Vinyl matting or runner, brown, for slippery porches, etc. ————— 79c

24" wide, per lineal ft. ————— 36" wide, per lineal ft. ————— \$1.09

Imitation Oak Flooring Rug Border 24" wide, lineal ft. ————— 27c 36" wide, lineal ft. ————— 39c

WINDOW SHADES

Regular and room darkening, in popular colors and sizes. We cut them to your size.

Merkel Home Furnishings -25

FOR SALE

40 ACRES, \$500 per acre.

TWO 10-ACRE building lots, at \$600 per acre.

HAVE BUYERS for farms and Chelsea homes.

NO RENTALS

R. D. Miller REAL ESTATE

Real Estate Broker
475-7311

H. W. Buss
phone 475-8910
15775 Cavanaugh Lake Rd.
Chelsea, Mich.
Post Office Box 381

List your property with Miller—fast, efficient service. -24tf



JIM'S PURE SERVICE

Tires — Batteries — Tank-Ups — Brake Service — Wheel Alignment

PHONE 475-2822 501 SOUTH MAIN

WANT ADS

POSITIONS AVAILABLE for R.N. and LPN, part-time and full-time. Phone 475-8831, ext. 218 for appointment. -17tf

MEL HARTMAN, residential builder. Free estimates; houses, garages, kitchens. Flat work and roofs. Call 878-0514. -13tf

FOR SALE — 1969 GTX 440, A-1 condition with 4 new tires, \$400, take over payments. Call 475-2709 after 4 p.m. -26

JUST IN TIME for Christmas, German shepherd and shepherd puppies, six weeks old, free to a good home. Phone 475-8552. -26

CHRISTMAS TREES for sale in Waterloo, next to the town hall, sold by the Waterloo Village MYF. Choice. \$3.50. -27

FOR SALE — '67 Chevy convertible, with new top, 327 stick; also '65 Chevy, 283, stick. New paint on both. Also '68 Ford stake truck. Phone 475-2893. -x26

FOR SALE — 8-ft. toboggan with pad. Used one season. \$25. Compare with \$95 new. Also, antique upright, wind-up Victrola. Best offer. 475-8014. -25tf

Real Estate For Sale

FAMILY HOME — 4-bedroom older home. Near business district. 2-car garage. \$14,000. Land contract possible.

INVEST FOR THE FUTURE — 7 1/2 acres. Has village water, electric and gas. 745 ft. of R.R. frontage. 3-bedroom house to provide current income. \$30,000 with terms.

SPOTLESS — 2 bedrooms, separate dining room, 1 1/2-car garage. Aluminum siding. Ideal for a couple. \$22,000.

BUILDING LOT — One mile east on Old US-12. 135 feet of frontage. 1 1/4 acres. \$4000.

10 ACRE LOTS — Several to choose from. 2 1/2 miles out. From \$7,500 up.

CLARENCE WOOD

BROKER
646 Flanders St.
Phone 475-2033 -18tf

POINSETTIAS

Red, pink or white
\$4.00 up

Wide variety of other plants, planters and Christmas novelties

Grave Blankets

6 ft. trimmed evergreen grave blankets, \$8.00

6 ft. untrimmed evergreen grave blankets, \$6.00

FREE DELIVERY DAILY
In CHELSEA & DEXTER AREAS

Chelsea Greenhouses

Member of
FTDA and Teleflora Assoc.
PHONE 479-6071
7010 Lingane Rd. Chelsea, Mich. x26

WORK SHOE HEADQUARTERS

Famous Red Wing Brand
\$12.95 to \$26.95

Foster's Men's Wear -34tf

FOR SALE — Graceful, chain-hung, 5-globe light fixture. Designed for the dining area ceiling. Reg. \$21.00, Sale \$15.75. Save 25%! (Ask for Fixture No. M1035-1.) Chelsea Lumber Co. -26

ELECTROLUX VACUUM CLEANERS

SALES and SERVICE

JAMES COX
Ph. 428-2931 or 428-8221
Manchester

WANT ADS

ATTENTION: Moriarty erects buildings all winter if you are in need of a commercial or agricultural building order before winter and want to save money. Quality materials and workmanship guaranteed. Call Petersburg 279-1855 collect or write to Box 84, Petersburg, Mich., for all your pole building needs see Moriarty Pole Builders today. -16tf

For Low Cost Floor Covering

We have small and large pieces, ends of rolls, etc., of linoleum and carpeting at close-out prices.

Many sizes and colors to select from.

MERKEL BROS. -x40tf

WORK SHOE HEADQUARTERS

Famous Red Wing Brand
\$12.95 to \$26.95

Foster's Men's Wear -34tf

WILL DO BABYSITTING in my home. Phone 475-2883. -22tf

AKO REGISTERED German Shepherd pups, 8 wks. old. Champion blood line. From \$50. Call 475-8196. -25

FOR RENT — 2-bedroom apartment, furnished or unfurnished, adults. 475-7180. -25tf

FOR SALE — 8-track stereo, 5 tapes, \$35 or trade for bolt action or semi-automatic 22 rifle. Phone 475-7288 after 5 p.m. -27

FURNISHED APARTMENT for rent, downtown Chelsea. Quiet couple preferred. References plus deposit. Ph. 475-7541. -25

WANTED — Small farms in Chelsea area for Detroit buyers. \$35,000 or under. Willis Real Estate (517) 622-8121. -25

FREE — Four cuddly puppies. Call week-days after 4 p.m. or anytime on week-ends. -25

FOR SALE — 1970 Chevrolet, Nova, 2-dr., hardtop. V-8, standard transmission. Must sell to settle estate. \$1,995 or best offer. Phone 475-8254. -25

LOST — Black cat, white paws, 1/2 white nose. Ph. 475-8288 after 5 p.m. -25

ALLSTATE INSURANCE

AUTO — BOAT — COMMERCIAL — LIFE — HEALTH — HOME

Phone Eves. or Week-ends for
N. H. MILES, Agent
GR 5-8334 -44

REAL ESTATE FOR SALE

3-BEDROOM ranch type home, garage.

55 ACRES vacant land. Approved for subdivision. Gas available.

KERN REAL ESTATE
Phone 475-8568
Chelsea -25tf

KITCHEN CABINET SPECIAL

We're re-arranging three display kitchens and offering the existing units at less than dealer cost:

No. 1 — 4-foot wall and base, including top. Sale \$169.00. Save \$155!

No. 2 — 9-foot wall and base. Sale \$595.00. Save \$560.00!

No. 3 — 5 1/2 ft. by 9 1/2 ft. "Eli". Sale \$259.00. Save \$228.00!

All units are unused and less than 1-year old.

Dial 475-3391

Chelsea Lumber Co. -25

WORK SHOE HEADQUARTERS

Famous Red Wing Brand
\$12.95 to \$26.95

Foster's Men's Wear -34tf

FOR SALE — Graceful, chain-hung, 5-globe light fixture. Designed for the dining area ceiling. Reg. \$21.00, Sale \$15.75. Save 25%! (Ask for Fixture No. M1035-1.) Chelsea Lumber Co. -26

ELECTROLUX VACUUM CLEANERS

SALES and SERVICE

JAMES COX
Ph. 428-2931 or 428-8221
Manchester

WANT ADS

PROMPT TREE REMOVAL, toppling and cabling. Free estimates, fully insured. Phone 475-8085. -x2

KNAPP SHOES

For Cushion Comfort
Robert Robbins
475-7282 -48tf

TREE REMOVAL DONE — Also buyers of standing timber and walnut trees. Chelsea 475-7631. -34tf

ALUMINUM SIDING, custom trim, and gutters. Dave's Siding Co. Phone 498-2423. -15tf

FORMICA TOPS

Phone
475-2857 -x22tf

G. G. HOPPER

Building Contractors
Phone GR 5-5581
Gregory 498-2148 -40tf

FOR SALE — Ford 15" rim wheels. Like new, reasonable. Ph. 475-2749. -25

FOR SALE — McCulloch chain saw. Ph. 475-8906. -25

LOST DOG — Weimaraner, male, brownish color, short haired. Answers to Duke. Missing since Saturday. Ph. 475-8286; Art Schmunk. -25

WANTED — Small farms in Chelsea area for Detroit buyers. \$35,000 or under. Willis Real Estate (517) 622-8121. -25

FREE — Four cuddly puppies. Call week-days after 4 p.m. or anytime on week-ends. -25

FOR SALE — 1970 Chevrolet, Nova, 2-dr., hardtop. V-8, standard transmission. Must sell to settle estate. \$1,995 or best offer. Phone 475-8254. -25

LOST — Black cat, white paws, 1/2 white nose. Ph. 475-8288 after 5 p.m. -25

Tractor Trailer Drivers Needed

Express Inc., needs men willing to take advantage of this opportunity of learning how to operate a Semi-Tractor Trailer and receive Certification according to The Department of Transportation regulations. No experience necessary. Average earnings with fringe benefits are in excess of \$5.00 per hour for trained Certified Semi-Tractor Drivers today. Ages 18 to 45 accepted.

For your immediate application by return mail, please call: 317-547-3483 or write to Express Inc., P. O. Box 41039, Indianapolis, Ind. 46240. -x25

FOR "a job well done feeling" clean carpets with Blü Lustré. Rent electric shampooer \$1. Dancer's, Chelsea. -25

USED CARS

1969 Pontiac Catalina 2-dr. hardtop, power steering, power brakes, auto trans. ————— \$2395

1969 Olds 442 2-dr. hardtop, power steering, 4-speed trans. (sharp) ————— \$2395

1967 Buick LeSabre 4-dr. sedan, power steering, power brakes, auto trans. ————— \$1495

1966 Chev II wagon ————— \$495

1965 Ford 2-dr. sedan, auto trans., power steering ————— \$595

1964 Valiant 2-dr., auto trans. \$495

1965 Comet 2-dr. sedan, V-8. \$495

1964 Dodge 330 4-dr. sedan, V-8, auto trans., power steering, power brakes ————— \$495

Sprague Buick-Olds-Opel, Inc.

1500 S. Main St., Chelsea
Evening 475-6271 or 475-8240
Phone 475-8664
Open evenings by appointment. -25tf

Robert H. Thornton Jr. REALTOR

U. of M. Certificate in Real Estate
105 N. Main St., Chelsea
475-8029, eve. 475-8857 -x25

Harper Pontiac Sales & Service

Close-out on 2 new 1970 Pontiacs plus 1 demo at big savings.

'67 Catalina 4-dr. with air

'67 Bonneville 2-dr. hardtop

'67 Ford Fairlane

'64 Bonneville 4-dr. hardtop

'63 Bonneville 4-dr. hardtop

'63 Catalina 4-dr. sedan

CHELSEA

Phone 475-5311 or 475-5451 days, 761-2999 evenings.
Open evenings by appointment. -24tf

WANT ADS

Hearthside Yarn Shop
5550 Conway Rd.

Imported and domestic yarns, needles and instruction books.

Free lessons and instructions.

Open daily except Sunday
9 a.m. to 9 p.m.

Phone 475-2014 -20tf

Headquarters for
Rubber Footwear
Famous Ball Band

Foster's Men's Wear -22tf

Reporter News Writer Wanted

Call for
interview appointment.
Ask for Mr. Leonard

The Chelsea Standard
Phone GR 5-3581 -23tf

CAR RENTAL by the day, week-end, week or month. Full insurance coverage, low rates. Call Lyle Chriswell at Palmer Motor Sales, GR 5-3271. -25tf

CHRISTMAS TREES

Same beautiful trees as usual.

All types

Get them early.

C. BYCRAFT
421 McKinley
475-2884
"Your Dealer for 40 Years" -26

WANTED — Lady for housework, one day a week, will pay well. Phone 475-7256. -25

NOTICE — The classified ad which was run in last week's edition of The Standard, does not apply to Mr. and Mrs. Larry Dean Adams, of 311 South St., Chelsea. -25

AUCTION DEC. 12, 7 p.m. New and used merchandise, also antiques. Waldon Auction Barn, 15600 Herman Rd., Manchester. -25

Colonial

This home shows all the decorative imagination of its owner. Fully carpeted with color coordinated drapes, light fixtures, bathroom decor and a new kitchen reflect the Early American Charm of this home. New reduced FHA terms possible.

-SPECIALS-

1 1/2-LB. BAG CLEANED, RE-VEINED
Shrimp \$2.69

10-OZ. PKG. ECKRICH
Smok-y-Link Sausages.. 59c

FRESH, CRISP
Head Lettuce . . . 2 for 49c

113 SIZE NAVEL
Oranges doz. 59c

FARMER PEET'S
Smoked Picnics . . . lb. 39c

28-OZ. BOTTLES
Vernor's Ginger Ale 2 for 55c

SCHNEIDER'S
MEATS - GROCERIES
PHONE 475-7600 121 S. MAIN ST.

WANT ADS

VACUUM CLEANERS — Electro-lux, authorized sales and service. James Cox, Manchester. Ph. 428-2931 or 428-8221. 42tf

CUSTOM BUILDING

and
REMODELING

Chelsea Associated
Builders, Inc.

Phone 475-8182

ROBERT PATRICK for home improvement, building and maintenance. Ph. 475-7480. 45tf

XEROX COPIES made. First 20 at 20 cents each. Over 20, special prices. Metkel Brothers. 25tf

FOR SALE—100 feet of cyclone fencing, \$75. Also for sale, large metal wardrobe with wooden inner doors. \$25. Call 475-8494. 25tf

HELP WANTED—RN or LPN for night relief, two nights a week. Call 475-3881 for more information. 25tf

ALOUETTE SNOWMOBILES, the time is here. Han-Co Winter Sports invites you to take a trip to Waterloo for the best deal on the reliable one. Located at 15901 Seymour Rd., or phone 475-7212. 25tf

HIA M-M-O-N-D ORGAN teachers wanted to teach in their own homes. Call Grinnell Brothers, Ann Arbor, 662-5667. 34tf

WINTERIZED COTTAGE for rent. Irish Hills area. 2 large bedrooms, full bath. Phone 685-7833 or 769-9536. 25tf

CARPET CLEANING by Burke. 12 cents a square foot, needs overnight to dry. In-Chelsea call Metkel Brothers, 475-8621. 38tf

TRAVEL TRAILERS — 13-ft. and up, 10x55 ft. trailers. John R. Jones Trailer Sales, Gregory, Mich. Phone 498-2655. 48tf

FOR SALE—Older home in Chelsea, four bedrooms. Low down payment, land contract. Call 475-2091 after 6 p.m. 29

FOR RENT—Unfurnished apartment, 1st floor, full basement, yard; heat furnished; 2nd floor, 3 rooms, kitchen, bath, heat furnished. Phone 475-2018 after 5 p.m. and week-ends. 24tf

FOR SALE — 20' Viking 4 hp. snow blower, \$100. New condition. Phone 475-5731. 25

PIANO TUNING, Chelsea and area. Facilities for reconditioning and rebuilding. Used piano sales, reconditioned grands and verticals. E. Eklund, 426-4429. 50tf

FIREWOOD for sale. Phone 475-2715. Pick-up or deliver. 25

MID-STATE
FINANCE CORP.

\$25 to \$1,000

For Any
Worthwhile Purpose

See or Call
FRANK HILL
at 475-8631

111 PARK STREET
CHELSEA, MICH.

WANT ADS

DELICIOUS and Jonathan apples, also sweet cider, 75 cents a gallon in your container, 85 cents in ours. Czaplak's Orchards, 1817 Runk Rd. -x28

USED TRACTOR TIRES—Large inventory on hand. Also used passenger truck grader tires. Jackson, Lee Brothers, 1106 Plymouth, Mich. Ph. 698-2925. 32tf

FOR REAL DOLLAR SAVINGS be sure and see us before you buy any new or used car. Palmer Motor Sales, Inc. Your Ford Dealer for over 50 years. 2tf

PATCHING AND PLASTERING. Call 475-7489. 33tf

WANTED—Women to work in the Waterloo area. Sewing experience helpful but not necessary. Reply to box DE-3 at The Chelsea Standard. 25

PICTURE FRAMING—Select from 20 pre-finished styles, 35c to \$1.95 per ft. Add \$3.00 for cutting and assembly if desired. Chelsea Lumber Co., 475-8391. 26

MARRIED COUPLES interested in joining the "In Crowd," call 769-6741. 326

CAR & TRUCK LEASING. For details see Lyle Christwell at Palmer Motor Sales, GR 5-3271. 49tf

FOR RENT — 3-room apartment furnished. References, no children. 475-2082. 28

CARD OF THANKS. We wish to thank our friends and neighbors for their many acts of kindness and expressions of sympathy to our family in the long illness and recent death of our mother, Anna, McDonald. Also, a special thanks to Dr. Krause and Dr. Fisher, the Chelsea Blood Bank, The Chelsea Rebekah Lodge No. 130, Past Noble Grands Club, Friendship Club, and Senior Citizens, and to the Rev. Olive Dickens for his comforting words. Mr. and Mrs. Harry Kealy. Mr. and Mrs. Harold McDonald. 48tf

IN MEMORIAM. In Loving Memory of Clay Langston, dear husband and father—3 years ago, Dec. 15, 1962. There is a road called remembrance which we travel day by day. The constant thought of loved ones is with us all the way. This road has many turnings, but down through all the years we do not mind the journey, as it kept him forever near. Sadly missed by his wife, children, grandchildren and great grandchildren. 25

THANK YOU. William Winter and his family wish to express their thanks and appreciation to all their friends, relatives and neighbors for the many kindnesses extended and for the cards and messages. He received while at St. Joseph Mercy Hospital and since his transfer to Chelsea, Michigan. Everything is very much appreciated and they all join in wishing you all a very Merry Christmas. Mr. and Mrs. William Winter and Family. 25

THANK YOU. Thank you to our friends, neighbors, and family, especially to our children, for the cards, gifts and the open house. Everything together made our silver wedding anniversary a memorable one. Lee and Esther Bollinger. 25

THANK YOU. I wish to thank my family, neighbors, and friends, for the many kindnesses extended to me and Marian at the time of my accident, and during my convalescence. A special thanks to my daily visitors, and those who helped "winterize" us. John Pierson. 25

THANK YOU. I wish to thank all my friends and relatives for all the cards and visits which I received while I was in the hospital, and since my return home. It was greatly appreciated. Joe Dreyer. 25



ABNORMAL RED BLOOD CELLS taken from a patient during a sickle cell anemia attack are shown in above photograph (left) and on right, cells from the same patient taken four hours after treatment with urea in invert sugar. Prior to treatment, 39 percent of this patient's red blood



cells were in the elongated sickle form, while a normal person would have only the round doughnut-shaped cells. The photo, taken by Dr. Marion L. Barnhart of Wayne State University, magnify the size of the cells more than 6,700 times.

Revolutionary New Treatment Found for Sickle Cell Anemia

Detroit—As many as 3,000 Michigan residents and 68,000 persons nationwide who have a killer blood disease could benefit from a medical breakthrough by a team of scientists from Wayne State University and Blodgett Memorial Hospital in Grand Rapids.

Sickle cell anemia, a hereditary disease which originated in Africa, affects black persons almost exclusively. Half of its victims die by the time they are 30, few live beyond 40 and many are invalids long before death.

Medical experts estimate that one in every 500 black persons suffers from the disease and that nine or 10 percent of all blacks carry the genes for the disease in their chromosomes.

But Dr. Robert M. Nalbandian, former WSU associate professor of pathology now with Blodgett, says the team has found that a common chemical called urea, produced in the human body and easily synthesized, can arrest the disease and prevent recurrences.

Normally round red blood cells in an afflicted person "sickle," or become elongated, blocking the flow of blood and causing a variety of symptoms: swollen hands, feet and limbs, paralysis and other deterioration.

The team has developed a method of treatment with urea that has proven successful but is not yet available to all diseased persons.

The scientists also have developed a fast, inexpensive blood sample test to identify those who may have the disease, a real method of stopping the painful symptoms of an attack which develop when sickled blood cells stop normal circulation and a daily treatment method to control the disease for penitents a day.

Patients with sickle cell anemia require frequent hospital care during attacks.

Dr. Nalbandian and the Wayne State team used a model developed by Dr. Makio Murayama, of the National Institutes of Health, which gave a molecular theory of what causes red blood cells to elongate in sickle cell anemia.

Using the model, the researchers sought an agent which would stop the molecules from joining together. They discovered that a waste product of the liver, urea, when used with a compound called invert sugar, not only would break up a sickled chain of molecules, but also would keep them from rejoining.

Each time a person suffering from an attack was treated, he

THANK YOU. I wish to thank my family, neighbors, and friends, for the many kindnesses extended to me and Marian at the time of my accident, and during my convalescence. A special thanks to my daily visitors, and those who helped "winterize" us. John Pierson. 25

THANK YOU. I wish to thank all my friends and relatives for all the cards and visits which I received while I was in the hospital, and since my return home. It was greatly appreciated. Joe Dreyer. 25

THANK YOU. I wish to thank my family, neighbors, and friends, for the many kindnesses extended to me and Marian at the time of my accident, and during my convalescence. A special thanks to my daily visitors, and those who helped "winterize" us. John Pierson. 25

THANK YOU. I wish to thank all my friends and relatives for all the cards and visits which I received while I was in the hospital, and since my return home. It was greatly appreciated. Joe Dreyer. 25

THANK YOU. I wish to thank all my friends and relatives for all the cards and visits which I received while I was in the hospital, and since my return home. It was greatly appreciated. Joe Dreyer. 25

THANK YOU. I wish to thank all my friends and relatives for all the cards and visits which I received while I was in the hospital, and since my return home. It was greatly appreciated. Joe Dreyer. 25

THANK YOU. I wish to thank all my friends and relatives for all the cards and visits which I received while I was in the hospital, and since my return home. It was greatly appreciated. Joe Dreyer. 25

THANK YOU. I wish to thank all my friends and relatives for all the cards and visits which I received while I was in the hospital, and since my return home. It was greatly appreciated. Joe Dreyer. 25

THANK YOU. I wish to thank all my friends and relatives for all the cards and visits which I received while I was in the hospital, and since my return home. It was greatly appreciated. Joe Dreyer. 25

THANK YOU. I wish to thank all my friends and relatives for all the cards and visits which I received while I was in the hospital, and since my return home. It was greatly appreciated. Joe Dreyer. 25

THANK YOU. I wish to thank all my friends and relatives for all the cards and visits which I received while I was in the hospital, and since my return home. It was greatly appreciated. Joe Dreyer. 25

THANK YOU. I wish to thank all my friends and relatives for all the cards and visits which I received while I was in the hospital, and since my return home. It was greatly appreciated. Joe Dreyer. 25

THANK YOU. I wish to thank all my friends and relatives for all the cards and visits which I received while I was in the hospital, and since my return home. It was greatly appreciated. Joe Dreyer. 25

THANK YOU. I wish to thank all my friends and relatives for all the cards and visits which I received while I was in the hospital, and since my return home. It was greatly appreciated. Joe Dreyer. 25

THANK YOU. I wish to thank all my friends and relatives for all the cards and visits which I received while I was in the hospital, and since my return home. It was greatly appreciated. Joe Dreyer. 25

THANK YOU. I wish to thank all my friends and relatives for all the cards and visits which I received while I was in the hospital, and since my return home. It was greatly appreciated. Joe Dreyer. 25

returned to a normal state within two days.

In one case, the patient had required a week of hospital care a month for a year. That patient has not returned to a hospital in

the six months since treatment started.

In 25 cases which have been treated, not one has had another attack, although none are cured of the disease.

Dr. Nalbandian emphasizes that further proof and testing of the procedure is essential. But the team has molecular proof of its theories at every step, and Dr. Marion L. Barnhart, a WSU electron microscopy expert, has taken photographs of blood samples before and after treatment that support their work.

"This is the first time," Dr. Nalbandian said, "that a disease has been understood well enough, thanks to Murayama, that effective therapy was designed theoretically at the molecular level and proven successful."

Financed in part by the Michigan Heart Association, the team is hoping funds from other sources will be made available for further research into their revolutionary and life-saving work.

Dr. Nalbandian has worked with the Army and Navy on some parts of the research, and both plan to use the blood sample screening procedures developed by Dr. Raymond L. Henry at Wayne State. Dr. Jeanne Lusher, a WSU assistant professor of pediatrics, hopes to establish a similar program at Children's Hospital in Detroit.

Earlier that day, at 12:45 a.m. on the morning of Dec. 3, Patrolmen Peebles and Schneider of the Chelsea Police Department had been alerted by the Washtenaw County Sheriff's Department, who were acting on a tip they had received concerning another Army deserter who had been AWOL since Oct. 13 from Fort Riley.

Peter Steven Miller, 20 years old, had been granted a leave on Sept. 30, to extend until Oct. 13. Miller had changed the notation on his leave papers to read that his leave was from Oct. 30 until Nov. 30.

He was arrested at the home of his sister, Beatrice Dobbs, of 621 N. Main St., where he had been living.

Miller was taken to Washtenaw County Jail, where he was held for military authorities.

Family Fight Results In Court Decision On Assault, Battery

A family fight which took place Wednesday evening, Nov. 27, resulted in an assault and battery charge for the husband, and cuts and bruises for his wife.

Chelsea police, acting on a complaint received Wednesday evening, went to the home of Leveda Yost, 310 W. Middle St., where her husband, Richard Yost, of 1385 Delaware St., Ypsilanti, had come to see her. The couple, who are separated, had been fighting. Mrs. Yost was beaten about the head, and had to be taken to Chelsea Medical Clinic, where she had several stitches in the right side and rear of her head.

Mrs. Yost pressed charges of assault and battery against her husband, who appeared this past week before Judge Patrick J. Conlin in the 14th District Court. He pled guilty, and was fined \$35 fine and costs. He was placed on 90 days probation.

Superstition has never contributed to the unfolding of truth.

Superstition has never contributed to the unfolding of truth.

Superstition has never contributed to the unfolding of truth.

Superstition has never contributed to the unfolding of truth.

Superstition has never contributed to the unfolding of truth.

Superstition has never contributed to the unfolding of truth.

Superstition has never contributed to the unfolding of truth.

Superstition has never contributed to the unfolding of truth.

Superstition has never contributed to the unfolding of truth.

Superstition has never contributed to the unfolding of truth.

Superstition has never contributed to the unfolding of truth.

Superstition has never contributed to the unfolding of truth.

Superstition has never contributed to the unfolding of truth.

Superstition has never contributed to the unfolding of truth.

Superstition has never contributed to the unfolding of truth.

Superstition has never contributed to the unfolding of truth.

Superstition has never contributed to the unfolding of truth.

Superstition has never contributed to the unfolding of truth.

Superstition has never contributed to the unfolding of truth.

Student Products from Continuing Education Classes Will Be Shown

On Saturday, Dec. 12, at the Wylie Middle School in Chelsea, residents of Chelsea, Chelsea and Pinckney, and all the intervening locations will be able to view products completed by many of the students from classes of the Dexter Continuing Education Program. The program is a relative newcomer to this area, and has found enthusiastic and interested reception among residents of this western section of the county during its brief life-span.

The displays will be available for men, women and children to observe on the same evening that one of the continuing education classes presents a special stage production, "The Silver Thread" at Wylie school auditorium.

Included in the display will be some of the art pieces from Mrs. John (Mary) Rush's adult art classes; products of the book-crafting class headed by Mrs. Gerald (Helen) Canter, as well as the work of students from the arts and crafts for home decoration class, which several instructors share. Country tin painting will be exhibited by students of Mrs. Herbert (Dorothy) Abbott's class in that subject, and Leo Heinzman and his students in the upholstery class will be putting some of their prize workmanship on display. Knitting from Mrs. Patrick (Lori) Doody's students, and some special products of Mrs. Winthrop (Betty) Vail's students in the Bishop Sewing I class will also be exhibited Saturday night.

Mrs. Jack Brigham has been instructing classes in caning and in furniture refinishing this year, and several samples of her students' work will be on display, in addition to some of the work from the rushing class of which Mrs. Carl (Bobbie) Willoughby was the instructor this fall.

Prof. Phillip Davis and his students from the fall photography class will be showing some unusual and colorful shots to those attending the exhibit.

Just in time for the Christmas season, students from Mrs. Rhonda (Ruth) Arnold's "Flower Making and Christmas Ideas" class will be displaying much of their work.

From among classes for which children may register, student efforts will also be displayed at the

giant exhibition at Wylie school. These will include products from the children's knitting class headed by Mrs. Doody, and from the children's art classes which Jeff Spaulding instructs. Articles from students of the children's Bishop sewing class headed by Mrs. John (Linda) Eppich, will also be shown.

During the intermission time of the stage production, students from the square-dancing class led by Conrad "Connie" Eichorn, will present a demonstration of their skills. There will also be techniques demonstrated in tap, ballet and acrobatic dancing during the evening, from classes directed by Mrs. B. E. (Betty) Walton.

In addition to exhibitions and demonstrations of the students in classes now nearing completion, there will also be items displayed by teachers of classes to be offered for the second semester, beginning the week of Jan. 18. These will include Mrs. James (Ann) Penkins' decoupage class, a weaving class headed by Mrs. Curtis (Margaret) Thompson, a ceramic class, which Mrs. Farhad (Tina) Kazemi will instruct, and Mrs. James (Ellen) Farr's classes on Bishop clothing II and Bishop children's clothing construction.

Interested prospective students in any of the areas mentioned above are invited to take the time to stop and view the colorful displays.

TODAY'S THOUGHT

By LOUIS BURGHARDT

Ben Franklin said: "A good newspaper and Bible in every house, a good schoolhouse in every district, and a church in every neighborhood; all appreciated as they deserve, are the chief support of virtue, morality, civil liberty and religion."

Newspapers are published everywhere. Every individual person must determine his or her extent of appreciation. Nearly every home has a Bible. Too few are read; hence unappreciated by the many who own a Bible as a mere possession. Schools are in every district. They and their purposes simply can not be appreciated when small but determined militant minorities successfully shackle the ideas and ideals of the majority of students and teachers. Churches are seen in every neighborhood. They can not be appreciated when people absent themselves from devotional participation and refuse to change patterns of daily conduct.

Isn't it obvious that if virtue, morality, civil liberty and religion are to be supported, a lot more people will have to change their thinking, attitudes and actions? . . . BURGHARDT FURNERAL HOME, 214 East Middle St., Chelsea, Mich. Phone GR 5-4141.

SPECIALS

ECKRICH HAM, TURKEY, BEEF

Slender Sliced Meats

3 pkgs. 83c

BULK

Brown Sugar . . . 5 lbs. 73c

HOPPY POP WHITE OR YELLOW

Pop Corn . . . 2-lb. bag 24c

6-OZ. CAN BIRDS-EYE FROZEN

Orange Juice . . . 3 for 53c

We have everything for your Christmas Baking

BULK QUANTITIES
Red and green candied cherries, pineapple rings and wedges, mixed diced peel, pitted dates, pecan and almond meats, orange, lemon and citro peel.

We Have Bulk Molasses
Fancy Nuts in the Shell

KUSTERER'S
FOOD MARKET

DIAL 475-2721 WE DELIVER

**BANK AUTO
LOANS ARE
BEST!**

ANY TRIP YOU MAKE will be more pleasant, if the car you drive is financed the Bank Way—economically, conveniently and with local people.

Now Paying the Highest Interest Rates
On Savings Accounts
Any Bank Can Pay

CHELSEA STATE BANK

Member Federal FDIC Member Federal Reserve System Deposit Insurance Corp.

**EDUCATION
IS OUR
BUSINESS
Try It!**

WASHTENAW
COMMUNITY
COLLEGE

**use this amazing
HOST MACHINE, CLEAN
CARPETS—NO WETTING**

Now you can get your carpeting party clean using our amazing HOST electric brush and HOST cleaner. Quick and easy as vacuuming. No wetting, no waiting. Rent machine, Call or come in today.

20-YD. PKG. HOST CLEANER\$5.95
40-YD. PKG. HOST CLEANER\$9.95
Purchase includes FREE Use of Host Machine

MERKEL BROTHERS
Open Mon. & Fri. Until 9 p.m. Ph. 475-8621

**PURITAN®
FULL-FASHIONED
BAN-LON®
BROOKVIEW**

America's favorite knit shirt because it's first in comfort and good looks! Knit to fit—no underarm bind. Full-Fashioned collar. Pop it in the automatic for washing and drying. The colors are terrific. Sizes S-M-L-XL.
*Texturized yarn, 100% DuPont rayon.

\$10.00

**STRIETER'S
CHRISTMAS STORE FOR MEN**
"The Place To Go for Brands You Know"

**WE ARE GLAD
TO OBLIGE**

Because a pharmacy is intimately involved with health, the service it must provide goes much beyond any possible profit motive or advantage over a competitor. The best example of this pharmacy ethic is the cooperation between ordinarily competing pharmacies when time is an urgent factor.

Although we usually have most prescribed drugs in stock, or can get a medicine delivered to us the same day, we occasionally must have it that same hour. When this happens we will ask another pharmacy to "oblige" us and let us borrow from him the needed drug until we can replace it. Other pharmacies will follow the same procedure in getting an urgently needed medicine from us. The health of the customer must always be the primary concern of every pharmacist.

YOU OR YOUR DOCTOR CAN PHONE US when you need a delivery. We will deliver promptly without extra charge. A great many people rely on us for their health needs. We welcome requests for delivery service and charge accounts.

CHELSEA DRUG
24-HOUR PRESCRIPTION SERVICE
101 N. MAIN ST. PHONE GR 5-4611

Letters to the Editor

Dear Sir:

Regarding the proposed Metropolitan Park for Lima township.

I think every citizen and especially every taxpayer in the Chelsea School District should be concerned.

If they take 4,087 acres (which is the amount they want) out of Lima township and off the tax roll, the rest of us will have to assume the taxes from that portion.

With the struggle we are having to keep our schools going, and taxes rising every year, I don't know why we should take on this extra burden for something that is not needed in Washtenaw county, and especially in Lima township. They have told us it would cost over \$5 million a year to acquire the land and maintain it as it is not self-supporting.

This land they would be taking is some of the best land in Washtenaw county. Not only that, but there are thousands of acres of land in the outlying area that is tile drained into Mill Creek which will be damaged or ruined by damming Mill Creek, and backing the water up.

I am concerned because one-half of our farm is in Lima township, but the entire farm drains into Mill Creek.

Mr. Laidlaw from the Huron Clinton Metropolitan Authority said that the government was taking land out of production every year but that is an altogether different situation.

They take a small amount of land out of production from each farm that co-operates with the program temporarily to regulate crop production, but they still have the land to fall back on when they need it for production.

It may be needed sooner than we expect, with the population growing as it is and if we have a couple of years of drought such as we have had in years past, also with some of the pests and diseases that have come up in the last two or three years such as the cereal leaf beetle, alfalfa weevil, the corn leaf blight, and who knows what next.

To take this good farm land out of production permanently I think is a crime and a mistake that I think will be deeply regretted some

day. Not only that but many homes will be destroyed which are so badly needed today. I believe there are some 90 homes in this area.

Many of these people have worked a life time to acquire what they have.

At the meetings we have had the people have voted unanimously to fight this project.

David Bacon, Mrs. Virginia Denham, and Mrs. Margaret Sias and the other members of the executive committee of the MCRG and those who have volunteered to work on the different committees are working hard, and spending a great deal of time to get the facts and data together. Let's all back them up 100 percent.

If we are going to do something, now is the time to do it.

I think it is the duty of all of us to write to our Senator, Representative, or the Washtenaw County Board of Commissioners to express our objections.

We have a good prosperous community around Chelsea. Let's try and keep it that way. We need these good farms and homes in this area for the welfare of the community.

We need the property in this area on the tax rolls to help support our schools. We need the primary money from the children in this area for our schools.

They told over the radio the other day that there were 10 million people hungry in the United States today.

What could it be in 10 years from now or even 20 years from now?

I think it would be much more enjoyable to have a good dinner and take a ride through a nice well-kept farming community than to go to the park with an empty lunch basket.

Sylvester Weber.

1 IN 4 DEPENDS ON AG

All of Michigan's farmers could be seated in Michigan State University's Spartan Stadium (capacity 76,000), yet one of every four Michigan citizens derives some part of his income from agriculture, notes Dr. George Dike, Michigan State University agricultural economist.

District Court Proceedings

In the 14th District Court this past week, Bruce Rothfuss, Brooklyn, pled guilty to speeding. He paid \$30 fine and costs.

Charles Cook, Milan, pled guilty to driving on an expired license. He paid \$5 and the case was dismissed.

James Hayden, Milan, pled guilty to killing an antlerless deer. He paid \$50 fine and costs, and \$100 restitution.

Stephen W. Thaurer, Saline, pled guilty to speeding 40 mph in a 35 mph zone. He paid \$40 fine and costs.

Diane Payear, Ann Arbor, pled guilty to speeding. She paid \$26 fine and costs.

William D. Barber, Whitmore Lake, pled guilty to illegal use of marijuana. Sentencing was set for Dec. 9 in Chelsea.

Stanley Wiczarek, Hamburg, pled guilty to reckless use of fire arms. Sentencing will be Dec. 16.

Robert Lee Campbell, Nemah Mills, faced examination on a charge of possession of heroin. He was bound over to Circuit Court.

Larry J. Blanding, Lyndon township, faced examination on a charge of possession of heroin. He was bound over to Circuit Court. His trial was scheduled for Jan. 8.

Teddy Durham, Manchester, pled guilty to having an expired operator's license, for which he paid \$15 fine and costs. He also pled guilty to reckless driving. He paid \$75 fine and costs for the second count.

Jeanette Wilson, Saline, pled guilty to speeding 40 mph in a 25 mph zone. She paid \$20 fine and costs.

Timothy C. Whitmore, Ann Arbor, pled guilty to speeding 40 mph in a 25 mph zone. He paid \$20 fine and costs.

Donald J. Grannis, Dexter, pled guilty to making an improper left turn. He paid \$15 fine and costs.

Dennis Holmberg, Brighton, faced examination on a charge of armed robbery. He was bound over to Circuit Court. Trial date was set for Jan. 8.

David Tokarski, Dearborn, pled guilty to driving on a revoked license. He was given seven days in jail.

Richard Allen Wilcox, Ann Arbor, pled guilty to having no operator's license on his person. He paid \$100 fine and costs or spend five days in jail for that count. He also pled guilty to having no driver's license. He paid \$60 fine and costs, or spend six days in jail.



GIRL SCOUTS

TROOP 22—

Junior Girl Scout Troop 22 met Thursday, Dec. 3. Helping mothers were Mrs. Johnson, Mrs. Noah, Mrs. Hume and Mrs. Schulke. Christmas presents for the girls' fathers were made.

Dawn Klobuchar, scribe.

TROOP 58—

Brownie Troop 58 met Monday, Dec. 6. They started their meeting with the flag ceremony.

They finished their ornaments. They sang a song and passed out permission slips to go to Cobo Hall.

Meeting ended with taps and the squeeze.

Tammy Lorenz, scribe.

TROOP 84—

Brownie Troop 84 met Monday, Dec. 7, at the Methodist church.

Beth Merkel, Janine Osborne, Donna Finkbeiner, Theresa Heilman, and Kathy Herrst were in charge of the flag ceremony.

Cathy French brought treats.

The girls wrote a thank-you note to the people who drove them to the Ice Follies.

Bow & Cursey tag was played, and the troop practiced Christmas Carols.

Meeting was closed with a flag ceremony and taps.



SPORTSMANSHIP AWARD winners, Mr. and Mrs. Don Meyers, and Silas Hopkins, display their trophy-clock at the Trail Blazers' Christmas party. Don Meyers is the club's newly-elected vice-president for 1971.



DAVID MEYERS, winner of first place in the 12-and-younger Junior Trail Blazer Riding Club, receives his gold belt buckle. Awards were made Saturday, Dec. 5, at the club's annual Christmas party.



SILAS HOPKINS, president of the Trail Blazers Riding Club, congratulates Crystal Scott, first-place winner of the 13-and-older Junior Trail Blazer Riding Club. Her prize: a gold belt buckle.

Oil Your Sewing Machine Regularly

To keep a sewing machine in good condition, clean and oil it lightly after eight hours of use, said Bernetta Kahabka, clothing specialist with Michigan State University.

This may mean daily cleaning and oiling or oiling every two or three weeks, depending on how much you use the machine.

Clean the tension discs, take-up, bobbin case and the surface of the machine with a soft cloth. Use a lint brush to clean the feed dog and the bobbin case area.

After cleaning, apply a drop of sewing machine oil to the motion parts in the bobbin case area.

"But make it the smallest drop possible and be sure to use sewing machine oil," Miss Kahabka said.

"Household oil has gummed up many a machine because it is too heavy. After oiling, always sew a few lines of stitching on a scrap fabric to remove excess oil."

CROWD PLEASERS

The Tigers played before 19 crowds of more than 25,000 at Tiger Stadium in 1970.



TRAIL BLAZER RIDING CLUB officers for 1971, are, front row, from left, Don Meyers, vice-president; Tony Wisniewski, president; and Bernice Scott, secretary-treasurer. Board members for the coming year include, second row, Silas Hopkins, Bill Merrill, Bessie Sharp, and Larry Ford.

Trail Blazers Riding Club Holds Christmas Party

Trail Blazer Riding Club held their annual Christmas party, Saturday, Dec. 5, at the American Legion Hall at Cavanaugh Lake. The party was attended by 70 people, including members and their guests.

Turkey and ham and all the trimmings was the dinner which was served by all the members. Santa and his helpers came, bringing gifts for all.

Mr. and Mrs. Don Meyers were

given the Sportsmanship Award for this past year. Awards were also given to the Junior Trail Blazers, in the two age groups.

Winners in the 13-and-older Junior Trail Blazer group were Crystal Scott, who won a gold belt buckle for first place in the group. Second-place honors went to Vickie Meyers, and third place went to Dale Meyers. Vickie received a gold belt buckle for first place in the 12-and-younger division. David Meyers won first

place which was a gold buckle. While Debbie Wisniewski was second, receiving a gold belt buckle, and Tony Wisniewski received third-place honors, which was a halter. All the Junior Trail Blazers received a trophy.

New officers for 1971 are Tony Wisniewski, president; Don Meyers, vice-president; and Bernice Scott, secretary-treasurer. Board members include Bessie Sharp, Larry Ford, Silas Hopkins, and Bill Merrill.

MSU Natural Resources School Has Students From 57 Countries

Enrollment in the College of Agriculture and Natural Resources at Michigan State University included 214 foreign students from 57 different countries as of spring 1970.

Almost 30 percent are from China, Canada and Thailand.

More than 70 percent of all foreign students received their financial support from university governmental and private sponsors.

Of the 16 college departments, agricultural economics attracted 25 percent of the students. Others with large concentrations are in agricultural engineering, crop and soil science, and food science.

Men dominate the group. There are 195 males, 19 females. Fifty-seven percent of the men and 67 percent of the women are working at a master's level. Doctoral work claims 38 percent of the men and 33 percent of the women.

MASON SHOES Holiday Special!

Mason is offering its best monthly sale yet. For the month of December, there are 37 styles, men's and women's shoes and boots, to choose from. You'll save from \$2 up to \$10.05 a pair. Just note these fine examples:

Reg. Sale
Men's wing tip\$22.95 \$14.95
Men's work shoe, w/supt.\$17.95 \$12.95
Ladies' dress shoe \$13.95 \$ 9.95
Ladies' winter boot\$12.95 \$ 8.95

Orders must be placed with the company prior to Dec. 15 to be received by Christmas. So HURRY, HURRY, HURRY, and call

Eddie (Stan) Stanley
475-7576

GET YOUR FAIR SHARE!

Records show that Americans eat about 112.6 pounds of potatoes, 8 pounds of rice, 185 pounds of beef, and 64.8 pounds of pork during each calendar year.

Subscribe today to The Standard!

"SWIM-IN" BAR

The "pub-crawl" is a popular stroke at the El Tapatio Hotel in Guadalajara, Mexico, linked to New York by non-stop Air France service. The 214-room hostelry features a bar with stools in the pool—as well as on dry land.

CHARM BEAUTY SALON

4396 CLEAR LAKE ROAD
(Formerly of Grass Lake)

Two Operators - Hair Styling and Wig Service
Open on Mondays. Closed Tuesdays.

PHONE 475-2700

Anchor Inn

ANNUAL

CHRISTMAS PARTY

Saturday, Dec. 12

Starting at 7:30 p.m.

DINNER - DANCING - DOOR PRIZES

For Reservations Call 426-8183

NEW YEAR'S EVE PARTY

Tickets Now On Sale

Now is the time to cover Windows, Doors, Porches & Breezeways FOR WINTER-LONG PROTECTION

Warp's Crystal Clear, Flexible Plastic FLEX-O-GLASS

ONLY 36¢ per sq. foot. Also in 4 ft. widths.

GENUINE FLEX-O-GLASS is far stronger than polyethylene. It's the only plastic window material GUARANTEED 2 FULL YEARS.

Warp Bros. Chicago 60651. Pioneers in Plastics Since 1924. At Hardware and Lumber Dealers Everywhere.

Make Your Own LOW COST, STORM DOORS, STORM WINDOWS, PORCH ENCLOSURES

WITH ONE OF **Warp's** Cheaper than Glass

WINDOW MATERIALS

FLEXIBLE, SHATTERPROOF, MADE BETTER, LAST LONGER

Just Cut and Tack On

WE HAVE THE GENUINE CHELSEA HARDWARE

110 South Main St. Phone GR 9-6311

Refresh with MILK

MILK is best for your baby's health

Give Baby the right start in life with lots of milk. It's nature's most nearly perfect food... rich in vital food values that help little bodies grow up strong and healthy.

WEINBERG DAIRY

Old US-12 Phone GR 5-5771

Faster gains from better FEEDS

Pounds and profits mount up when you feed our Cattle rations... scientifically compounded to promote early weight gains.

Complete feeding rations for all your livestock, poultry.

FARMERS' SUPPLY CO.

PHONE GR 5-5511

we pay daily interest

Your money earns interest from day of deposit to day of withdrawal... even if your savings stay with us just one day. We pay 5% on passbook savings accounts and up to 6% on passbook certificate accounts.

All accounts insured to \$20,000 by F.S.L.I.C.

RAFE
the savings specialists

Liberty at Division, West Stadium at Pauline, Huron Parkway at Platt, Plymouth at Nixon.

ANN ARBOR FEDERAL SAVINGS

Member: Federal Home Loan Bank System • Federal Savings and Loan Insurance Corporation



JAPANESE TEA PARTY: Mrs. Paplowsky's fourth grade class at North Elementary school took an imaginary trip to Japan this past week, for an afternoon attendance of a real Japanese-type tea ceremony. As a culmination of a Social studies unit on Japan, the class held a tea party in the ancient Japanese tradition. The students wore the mats they sat upon, out of newspapers. The hats worn by the boys were fashioned from construction paper. The shoe-less fourth graders sat on the floor, and drank tea, and ate rice. According to North School principal, Robert Benedict, every fourth grade class studies several different coun-

tries throughout the year, Japan being one of them. Pictured above are, from left, Roger Moore, and Sheryl Keil. In the second row are Susan Pawlowski, Jennie Clark, Bill Kilpatrick, Jill Van Salmbruck, Becky Dawson, Kathy Myers. In row three are Cindy Bareis, Debbie Elliot, Veronica Satterthwaite, Robin Jones, Janis Proctor, Mrs. Paplowsky, teacher; Carrie Lane, Cindy Welshans, Kelly Hill, Debbie Stanley. In the last row are Richard Bauer, Chris Steinaway, Chuck Young, Gary Keleman, Danny Trinkle, Banny Blough, Chris Ford, Mike Kropp, Jeff Rabbitt, Eric Case, Tony Wisniewski, and Robert Gray.

Red Cross Repeating Popular 'Voices from Home' Project

The "Voices from Home" project started by the Washtenaw County Chapter of the American Red Cross eight years ago will be repeated during the coming holiday season, Mrs. James O. Mason, chairman, announced today.

Offered as a public service, the project enables families of servicemen to send 15-minute taped recordings of greetings to men in service at bases in this country or overseas. Tapes are "cut" at the Red Cross Operations Center on Packard Rd., and sent out at no cost to the families.

Last year tapes were sent to servicemen in Vietnam, Germany, Korea, the Philippines, Cuba, Turkey and to various bases in this country. Families from Ann Arbor, Ypsilanti, Saline, Whitmore Lake and Dexter were among those participating.

Mrs. Mason announced this procedure for making a recording: A member of the serviceman's family calls the Red Cross for an appointment. The family is advised to prepare notes on what is to appear on the record ahead of time. Some families read messages or letters and other greetings, and often when there are small children, they recite something learned in school. Many families accustomed to singing in the home sing Christmas carols for the recording.

"The recordings are done in private," stated Mrs. Mason, "so that families need feel no embarrassment over the personal nature of the message."

Recordings are completely pre-

pared for mailing while the family is present. A card is enclosed for the serviceman to give his reaction to the project. Cards returned to the Red Cross last year were high in praise of the plan, Mrs. Mason said.

The Red Cross Center near Buhr Park on Packard Rd., Ann Arbor, telephone 971-5300, will begin accepting appointments for the project this week. Appointments will run through Dec. 15.

Pre-Schooler Eating Problems Require Special Attention

If your pre-schooler takes longer than 30 minutes at a meal, he may be dawdling for extra attention, says Mrs. Helen Fairman, extension home economist for Washtenaw, Lenawee and Monroe counties.

"The 'hurry and eat your dinner' which his parents shout at him is better than no attention at all," The specialist recommends giving the child a little extra affection at mealtime.

Sometimes meals are too exciting. The child is caught up in the mood brought on by charged conversations among adults and older children. Encourage a calmer, but still friendly atmosphere, the home economist suggests.

A child who snacks all the time will be less likely to eat good meals, Mrs. Fairman says. If this is the case, simply reduce the number of snacks, the child eats, and eliminate them entirely an hour before meals.



VARSITY CHEERLEADERS put bounce in circle, Alicia Pierson, Captain Eileen Bristle, Cindi Leach, Becky Taylor, and Carole Dietle. In front year's varsity squad includes, from left, in the is Jodi Welton. Missing is Vickie Prater, alternate.

TROOP WITHDRAWAL

President Nixon has announced that the U. S. would withdraw 40,000 troops from Vietnam between now and Christmas. It will leave 344,000 Americans in South Vietnam at the start of the new year.

Bulldog Wrestlers Romp Over Tecumseh

(Continued from page one)

feated Tecumseh by the score of 31-14, at the same time. Pin victories were recorded by Steve Seifert, 112; Keith Kargel, 126; Steve

Bergman, 167; and Steve Wireman, 155. Decision victories were gained by Steve Straub, Dale Poertner, Glenn Musolf, and Jon Schenk, who gained a draw.

Standard Ads Are a Good Shopping Guide!

WANTED CEMENT & BLOCKWORK

All types—Poured walls, floors, drives and foundations.

CECIL CAUDILL

(517) 851-3847

MEN'S NEVER-IRON SUTTON - COLLAR

SPORT SHIRT

Here's the basic shirt for the fashion-wise wardrobe. It has the popular Sutton-Collar and banded button front. In 65% polyester, 35% combed cotton broadcloth. It never needs ironing. By CAMPUS, the sportswear the U. S. male wears most.



CAMPUS

FOSTER'S MEN'S WEAR

District Winners Named in Wool Sewing Contest

District 11 winners of the 1970-71 Make It Yourself With Wool contest were selected Saturday, Nov. 21, from a group of 23 girls in the Sub-deb (10-13), Junior (14-16), and Senior (16-18) participating in a fashion show at the Hillsdale County 4-H building at the fairgrounds.

Jennifer J. Walkup, 20, daughter of Mr. and Mrs. Max Walkup of Litchfield, modeled a seal brown, modified shirtdress with inverted back pleat made from a Vogue designer pattern in Heller doubleknit, to win the Senior division. Jennifer is a Junior at MSU, majoring in Retailing of Clothing and Textiles.

Senior runner-up was Marcia Gilbert, 18, daughter of Mr. and Mrs. Orrie Gilbert of Hillsdale, wearing a top-stitched mid-length pant suit. Marcia is a freshman at Kellogg Community College.

Pamela Hall, 16, daughter of Mr. and Mrs. James D. Hall of Ypsilanti, was the Junior division winner with a wool three-piece, burnt plaid, cape-vest pants outfit. Pamela is a sophomore at Ypsilanti High school.

Runner-up was Sharon Stout, daughter of Mr. Dorman Stout of Clayton, wearing a cape styled suit outfit.

All fabrics used had to be made of 100 percent wool loomed in America.

Miss Walkup and Miss Hall will participate in the junior and senior division of the state competition, which will be held at Michigan State University, on Dec. 12. Winners in the state level will go on to the national event to be held in Las Vegas, Nev., Jan. 19.

More than 145 Western Michigan University alumni and students are serving, or have served in the Peace Corps.

An introductory offer to people who have never owned a Chrysler.

We want to introduce as many people as possible to the finest-designed, best-built **ROYAL** Chryslers we've ever offered. So we're coming through with the Royal. A brand-new series of Chryslers. At a new low price. \$112* less than any other Chrysler series.

Coming through in a big way.

Royal is every inch a Chrysler. Uncompromisingly full-sized.

It's also a bigger car than our chief competition, Buick LeSabre and Olds Delta 88. With a roomier interior. And a bigger trunk.

A matter of inches.

Our new 360 V-8 is ten cubic inches bigger than the engines on Buick and Olds.

More important, especially in a car this size, our engine comes through with more horsepower. All on regular gas.

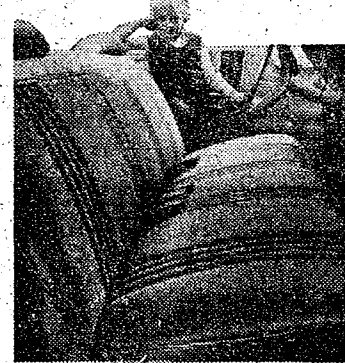
A difference of opinion.

LeSabre and Delta come with coil spring suspension systems. The Royal uses torsion bars.

They'll tell you coil springs are better. We'll tell you torsion bars are. Who's right?

Well, we urge you to try them both and make up your own mind.

It is interesting to note, however, that GM does use torsion bars on two models: one of the most expensive Cadillacs, and the most expensive Oldsmobile. Now are we coming through?



Embarrassing questions.

Ask your Buick or Olds dealer about options. An electric sliding sun roof?

Or a stereo cassette player available with a microphone? In reply, all you'll get is a red face.

Royal, on the other hand, lists both of these features on its long option list.

Built and engineered with extra care.

The Royal body is a single solid unit. Unitized with over 5000 individual welds.

The competition uses bolts to mate the body to the frame.

On a test drive, you probably wouldn't notice any difference. But the differences are there.

Our Unibody is stronger for one thing. It also stays tighter longer. So there is less chance of welds and seams opening up and forming rust pockets.

Another thing to remember is that Royal has no body bolts to work free and rattle after, say, a year or so of driving.

A car for people ready to move up.

Chrysler Royal. An introduction to Chrysler luxury and quality.

Coming through at a price you can afford.

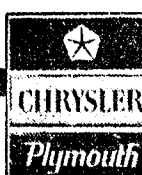
That's our offer. Welcome to Chrysler.



CHRYSLER ROYAL AVAILABLE IN THREE MODELS.

AUTHORIZED DEALERS **CHRYSLER** MOTORS CORPORATION

*Based on manufacturer's suggested retail price of Chrysler Royal and the same body-style Chrysler Newport with identical options. Price excludes state and local taxes and destination charges.



CIDAA

MICHIGAN CONSOLIDATED GAS COMPANY

G. A. SALES & SERVICE • 1185 Manchester Road

Coming Through.

Community Calendar

DECEMBER 1970

1

2

3

4

5

6

7

8

9

10

11

12

13

14

15

16

17

18

19

20

21

22

23

24

25

26

27

28

29

30

31

VFW Auxiliary combined business and social meeting Monday, Dec. 14, 8 p.m., at Rebekah Hall.

Joint meeting of Olive Lodge 156 F&AM, and Olive Chapter 140. Public installation of officers, Tuesday, Dec. 15 at 7:30 p.m., refreshments following.

Chelsea Rebekah Lodge No. 130 Dec. 15 at 8 p.m. Each member is to bring half dozen Christmas cookies.

Freer Acres 4-H club Christmas party, Sunday, Dec. 13, at home of Sue Palmer.

Yuletide dinner, Sunday, Dec. 20, at the Methodist church. Sponsored by Senior MYF. Adults \$1.50, children 10 and under, 75 cents. adv26

Cub Scout Pack 415 Christmas party, Sunday, Dec. 13, at 2 p.m., at K. of C. Hall. Bring one dozen cookies.

Jaycee Auxiliary membership meeting, Dec. 15, at home of Mrs. Art Steinaway, 8 p.m., Christmas party.

Easter Chapter of Congregational church, Thursday, Dec. 17, 8 p.m., at the church, Christmas party.

Mill Creek Research Council General meeting for members and interested parties, Tuesday, Dec. 15, at 8 p.m. at Lima Community Hall.

Beacon Light Study Group pot-luck Christmas party, Sharon Town Hall, Dec. 19, 7 p.m. Gift exchange.

Everyone is invited to the Ecumenical singing of Christmas carols at 7:30 p.m., Dec. 23 at the Nativity scene in the Village of Dexter. After the singing there will be hot chocolate and cookies at the Methodist dining room.

Jerusalem Farm Bureau, Dec. 10, 8:30 p.m. at the home of Mr. and Mrs. H. C. Powers. Bring cookies for refreshments.

Chelsea Social Service has need of warm coats in good condition, for boys, all ages through 12.

AREA DEATHS

Miss Alma Ulrich

Dies Unexpectedly Monday At Her Home in Chelsea

Miss Alma E. Ulrich, 74, of 138 E. Middle St. died unexpectedly at her home on Monday, Dec. 7. Born Sept. 12, 1896 in Freedom township, she was a daughter of Theodore and Elizabeth Dettling Ulrich. She was a member of St. Mary's Catholic church and the Altar Society.

Surviving are several nieces and nephews.

Funeral services will be held at 10 a.m. Friday at St. Mary's Catholic church with the Rev. Fr. Francis Wahowiak officiating. Burial will be made in Oak Grove cemetery. The Rosary will be recited at 7 p.m. on Thursday (today) at the Burghardt Funeral Home, where friends may call.

Leonard E. Cross

Had Come to United States From England in 1960

Leonard E. Cross, 62, of 139 Dewey St. died unexpectedly at his home on Sunday, Dec. 6. Mr. Cross was born in Cherry Willingham, Lincoln, England on May 22, 1908, a son of William and Annie Holmes Cross. He was married to Dorothy Canner on Nov. 29, 1929. She survives.

The family came to the United States in 1960.

Mr. Cross was employed by Rockwell-Standard Corp., Chelsea Spring Division.

Other survivors include two sons, Michael of Chelsea, and Philip of Oregon; two daughters, Mrs. James (Valerie) Hill of Skellingthorpe, Lincoln, England; and Mrs. Eric (Sylvia) Clifton, North Hykeham, Lincoln, England; as well as five grandchildren and a sister, Mrs. Eric (Jessie) Mellon of Holbeach, Lincoln, England.

A sister, Mrs. William Hubbard, died Sept. 7, 1970, at the Chelsea Methodist Home.

Funeral services are scheduled for 1 p.m. today (Thursday), Dec. 10, at the Burghardt Funeral Home with the Rev. Clive Dickins officiating. Burial will follow in Oak Grove Cemetery.

Jerry Kelly

Former Chelsea Resident's Husband Dies in Livonia

Jerry Kelly, of 34175 Wood Dr., Livonia, died Monday, Dec. 7, at home following a long illness. He was the husband of the former Phyllis Fischer, daughter of Mr. and Mrs. Harvey Fischer of Chelsea. She survives him.

Born in Kalamazoo on March 28, 1922, he was the second son of Mrs. James Chisholm, and the late Herbert Kelly.

He was afflicted with the rare and incurable Von Recklinghausen's Disease, which is manifested by benign tumors which form on the sheath of the nerves in the body, and gradually block off impulses to the brain.

Kelly was a teacher for many years, first in the Sumpter township schools, and later in the Cooper and Livonia schools. He was active in organizing groups for children, Mothers Clubs, and Audio Visual Club. He was Livonia's first professional librarian. He was responsible for the re-organizing of the Wilcox Library system, just prior to his retirement in 1963, due to the advancement of his illness.

Following his retirement, he continued to be active with young people, organizing and sponsoring the first Junior High school youth group for his church, and building the church library. When he was unable to continue working at this project, in 1969, the library contained more than 4,000 books.

Kelly is survived by his widow, Barbara; and his mother, Mrs. James Chisholm; three children, Michael, Patricia and Daunne; one brother, Philip, of Wayne; and several nieces and nephews.

Funeral services will be held today, Thursday, Dec. 10, at the Lantz Funeral Home in Livonia. Burial will be in Livonia.

Memorials may be sent to the Ward United Presbyterian church of Livonia, 17000 Farmington Rd., Livonia, Mich. 48154. The money will be used to equip and furnish the library of the new sanctuary wing.

Donald E. Leggett

Chrysler Corp. Employee Dies After Long Illness

Donald E. Leggett, 57, of 1216 Kernwood Dr. died at St. Joseph Mercy Hospital, Ann Arbor, Monday, Dec. 7, after an illness of more than one year. He was an employee of Chrysler Proving Grounds.

Mr. Leggett was born Jan. 7, 1913 in Lansing, the son of Roy and Mary Stickle Leggett. He was married Jan. 16, 1935 to Mary DeLanghe, who survives. They moved to Chelsea in 1953 from St. Johns.

Surviving besides his widow are his father, Roy Leggett of Yanketown, Fla.; three daughters, Mrs. Darrell (Caroline) Witt, of Grand Lodge; Mrs. Larry (Betty) DeJonghe of Ridgeway; and Mrs. Robert (Margo) Reed, Jr. of Cherry Point, N. C.; 12 grandchildren, and two sisters, Mrs. Milton (Helen) Bogert of Yanketown, Fla.; and Mrs. M. (Pauline) Bonaella of Lansing.

Funeral services were conducted at 1 p.m. on Wednesday, Dec. 9 at the Burghardt Funeral Home with the Rev. Clive Dickins officiating. Burial followed in Oak Grove Cemetery.

District who are in temporary, emergency need with food, clothing, fuel, transportation or medical care. Call at the office on the second floor, Municipal Building, any Tuesday or Thursday between 2 and 5 p.m. for consultation on economic or social problems. Phone 475-4581. 184f

BIRTHS

A son, Jimmy Jay, to Mr. and Mrs. Jimmie Sweeney, 527 W. Middle. Maternal grandparents are Mr. and Mrs. Alex Eresten of Chelsea and Mr. and Mrs. John Sweeney of Ypsilanti. Paternal great-grandparents are Mr. and Mrs. Angelo D'Andrea of Bradenton, Fla.

A son, Brent William, to Mr. and Mrs. John L. Schorsch, 1304 Ridge Rd.

A daughter, Katharine Rose, to Mr. and Mrs. Russell Hoffman, 1760 Rank Rd., Grass Lake, Nov. 28. Maternal grandparents are Mr. and Mrs. Paul Dew of Grass Lake, and paternal grandparents 190; Toh Tuttle, 195; Barry Boone, Lake.

Additional Deaths on page three

Methodist Home Hosts Group of Administrators

Chelsea Methodist Home was host to the Non-Profit Homes Association Wednesday, Dec. 2, at 1 p.m. The group, which is composed of approximately 50 administrators from a number of nursing homes and homes for the aging in Michigan, was addressed by Dr. Rizen of the Michigan State Health Department.

Dr. Rizen spoke on the health problem and other matters pertaining to the operation of nursing homes.

The Rev. John Fall, former administrator of Chelsea Methodist Home, and present administrator of the Franklin, Ind., United Methodist Home, also spoke. The Rev. Fall read a paper on admission policies and procedures for nursing homes and homes for the aging.

V. O. Johnson, administrator of the Chelsea Home, hosted the group which included Edward Terry, executive director of the Retirement Homes of the Detroit Conference of the United Methodist Church. Also present were president of the Non-Profit Homes Association, Bill Barr of Carmel Hall, Detroit, and secretary and treasurer of the Association, George Quinn of Presbyterian Village, Detroit.

A refreshment period and tours of the Chelsea Home followed the meeting.

REALLY Want to Please Her This Christmas?

It takes some planning, and a little time to install, so you couldn't come wheeling in with a new kitchen Christmas morn if you wanted to!

But, to make it the Christmas she'll never forget, just tell her the new kitchen she's wanted (needed) is hers.

— and leave the rest to the little woman and the kitchen staff at

CHELSEA LUMBER

Varsity Wins...

(Continued from page one)

and sophomore Jeff Schmidt gave Ron and Howie a great deal of help in controlling the boards. Jim Wojcicki, still recovering from his football injury, came off the bench to play a fine game also. All 12 ball players saw action in the game, with 10 of the 12 scoring.

JV Victory...

(Continued from page one)

Both teams battled for the lead in the fourth quarter, with neither side able to mount any large lead. Game was finally decided when, with less than a minute left, Chelsea hit two clutch free throws, while the Vikings missed their charity tosses.

Chelsea JV's received some fine board work from John Mann and Dan Bertke, who grabbed 14 and 13 rebounds, respectively.

The Bulldogs had some very balanced scoring also. Two players hit for double figures as Mann tallied 13 counters and Bruce Gustor 10. Mark Policht tossed in 9 points while Jeff Daniels added 7 points and Dan Bertke 6.

Line score:
Chelsea 13 13 6 13—45
Dundee 6 10 15 10—41

JUST ARRIVED!

LEVI BELL BOTTOM JEANS

Sizes 29-38 waist

STRIETER'S MEN'S WEAR

"The Place To Go for Brands You Know"

GAMBLES

RCA STEREO SYSTEMS - GREAT SOUND -







RCA Stereo Module System with FM-AM and FM Stereo Radio

RCA's value priced Stereo Module System provides dramatic stereo sound from equipment that fits in your bookshelves. Four-speaker sound system, Deluxe Studiomatic turntable, FM-AM-FM Stereo Radio.

\$199⁹⁵

19" B & W Portable TV

Big and bright and priced just right. Big-screen portable. Famous RCA quality performance. Value priced.

\$169⁹⁵ Including Stand

Go stereo module at a budget price—with RCA

Model VS1000

Modular stereo system at a value price. Studiomatic changer, diamond stylus. Duo-cone speakers.

\$99⁹⁵

Gift Ideas FOR A MERRIER CHRISTMAS

EUREKA

Hand Vacuum Cleaner \$19.95

8-SPEED

OSTER BLENDER \$29.95

OSTER

ELEC. CAN OPENER \$13.95

MAGNAVOX

Magnavox Clock Radio \$22.95

Portable Transistor Radio \$8.95

SCHICK

Portable HAIR DRYER \$16.95

SUNBEAM

HAND MIXER \$11.95

CRAIG CAR MODEL

8-TRACK STEREO With free set of speakers \$69.95

12" PORTABLE G.E. TV \$89.95

Cassette Player - \$21.95

Electric Knife - \$14.95

FRIGID PRODUCTS

118 N. Main St. HEYDLAUFF'S Phone GR 9-6651



JAPANESE TEA PARTY: Mrs. Paplowsky's fourth grade class at North Elementary school took an imaginary trip to Japan this past week, for an afternoon attendance of a real Japanese-type tea ceremony. As a culmination of a Social studies unit on Japan, the class held a tea party in the ancient Japanese tradition. The students wove the mats they sat upon, out of newspapers. The hats worn by the boys were fashioned from construction paper. The shoe-less fourth graders sat on the floor, and drank tea, and ate rice. According to North School principal, Robert Benedict, every fourth grade class studies several different coun-

tries throughout the year, Japan being one of them. Pictured above are, front row, from left: Roger Moore, and Sheryl Keil. In the second row are Susan Pawlowski, Jennie Clark, Bill Kilpatrick, Jill Van Salmbrout, Becky Dawson, Kathy Myers. In row three are Cindy Bareis, Debbie Elliot, Veronica Satterthwaite, Robin Jones, Janis Proctor, Mrs. Paplowsky, teacher; Carrie Lane, Cindy Welshans, Kelly Hill, Debbie Stanley. In the last row are Richard Bauer, Chris Steinaway, Chuck Young, Gary Keleman, Danny Triakle, Banny Blough, Chris Ford, Mike Kropp, Jeff Rabbitt, Eric Case, Tony Wisniewski, and Robert Gray.

Red Cross Repeating Popular 'Voices from Home' Project

The "Voices from Home" project started by the Washtenaw County Chapter of the American Red Cross eight years ago will be repeated during the coming holiday season. Mrs. James O. Mason, chairman, announced today.

Offered as a public service, the project enables families of servicemen to send 15-minute taped recordings of greetings to men in service at bases in this country or overseas. Tapes are "cut" at the Red Cross Operations Center on Packard Rd., and sent out at no cost to the families.

Last year tapes were sent to servicemen in Vietnam, Germany, Korea, the Philippines, Cuba, Turkey and to various bases in this country. Families from Ann Arbor, Ypsilanti, Saline, Whitmore Lake and Dexter were among those participating.

Mrs. Mason announced this procedure for making a recording: A member of the serviceman's family calls the Red Cross for an appointment. The family is advised to prepare notes on what is to appear on the record ahead of time. Some families read messages or letters and other greetings, and often when there are small children, they recite something learned in school. Many families accustomed to singing in the home sing Christmas carols for the recording.

"The recordings are done in private," stated Mrs. Mason, "so that families need feel no embarrassment over the personal nature of the message."

Recordings are completely pre-

pared for mailing while the family is present. A card is enclosed for the serviceman to give his reaction to the project. Cards returned to the Red Cross last year were high in praise of the plan, Mrs. Mason said.

The Red Cross Center near Buhr Park on Packard Rd., Ann Arbor, telephone 971-5800, will begin accepting appointments for the project this week. Appointments will run through Dec. 15.

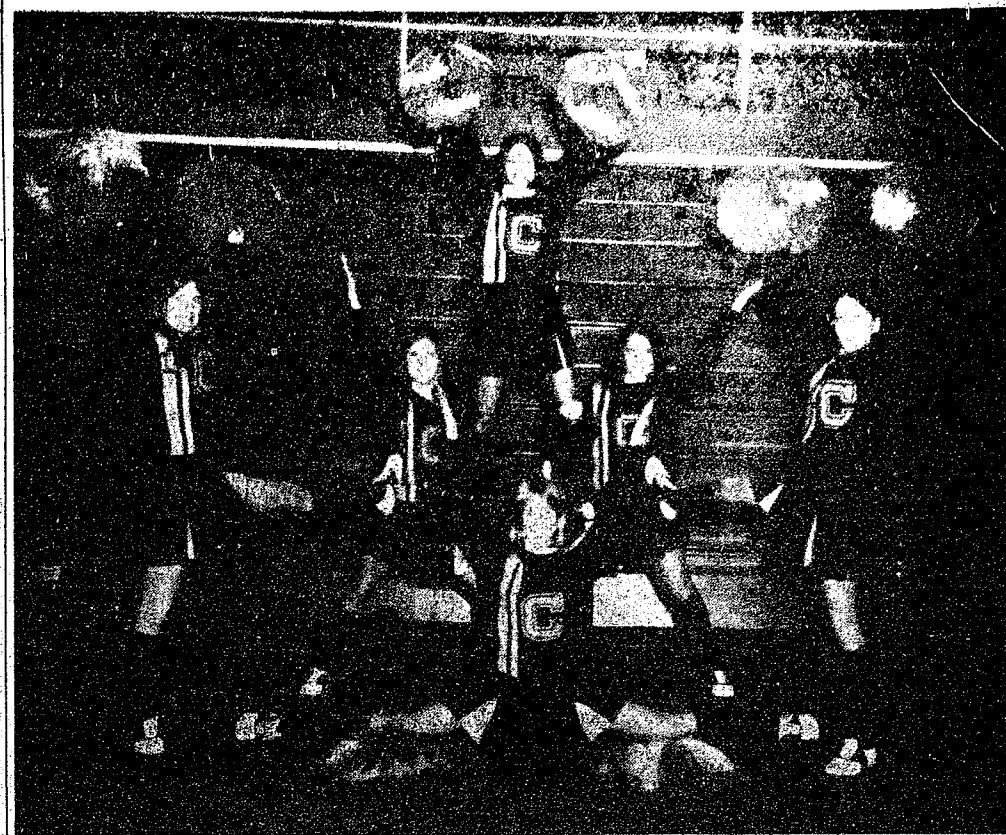
Pre-Schooler Eating Problems Require Special Attention

If your pre-schooler takes longer than 30 minutes at a meal, he may be dawdling for extra attention, says Mrs. Helen Fairman, extension home economist for Washtenaw, Lenawee and Monroe counties.

"The 'hurry and eat your dinner' which his parents shout at him is better than no attention at all." The specialist recommends giving the child a little extra affection at mealtime.

Sometimes meals are too exciting. The child is caught up in the mood brought on by charged conversations among adults and older children. Encourage a calmer, but still friendly atmosphere, the home economist suggests.

A child who snacks all the time will be less likely to eat good meals, Mrs. Fairman says. If this is the case, simply reduce the number of snacks the child eats, and eliminate them entirely an hour before meals.



VARSITY CHEERLEADERS put bounce in circle, Alicia Pierson, Captain Eileen Bristle, Cindi Leach, Becky Taylor, and Carole Dietle. In front year's varsity squad includes, from left, in the is Jodi Welton. Missing is Vickie Prater, alternate.

TROOP WITHDRAWAL

President Nixon has announced that the U. S. would withdraw 40,000 troops from Vietnam between now and Christmas. It will leave 344,000 Americans in South Vietnam at the start of the new year.

Bulldog Wrestlers Romp Over Tecumseh . . .

(Continued from page one)

feated Tecumseh by the score of 31-14, at the same time. Pin victories were recorded by Steve Seifert, 112; Keith Kargel, 126; Steve

Bergman, 167; and Steve Wireman, 155. Decision victories were gained by Steve Straub, Dale Poertner, Glenn Musolf, and Jon Schenk, who gained a draw.

Standard Ads Are a Good Shopping Guide!

WANTED CEMENT & BLOCKWORK

All types—Poured walls, floors, drives and foundations.

CECIL CAUDILL

(517) 851-3847

District Winners Named in Wool Sewing Contest

District 11 winners of the 1970-71 Make It Yourself With Wool contest were selected Saturday, Nov. 21, from a group of 23 girls in the Sub-deb (10-13), Junior (14-16), and Senior (16-18) participating in a fashion show at the Hillsdale County 4-H building at the fairgrounds.

Jennifer J. Walkup, 20, daughter of Mr. and Mrs. Max Walkup of Litchfield, modeled a seal brown, modified shirtdress with inverted back pleat made from a Vogue designer pattern in Heller doubleknit, to win the Senior division. Jennifer is a Junior at MSU, majoring in Retailing of Clothing and Textiles.

Senior runner-up was Marcia Gilbert, 18, daughter of Mr. and Mrs. Orrie Gilbert of Hillsdale, wearing a top-stitched mid-length pant suit. Marcia is a freshman at Kellogg Community College.

Pamela Hall, 16, daughter of Mr. and Mrs. James D. Hall of Ypsilanti, was the Junior division winner with a wool three-piece, burnt plaid, cape-vest pants outfit. Pamela is a sophomore at Ypsilanti High school.

Runner-up was Sharon Stout, daughter of Mr. Dorman Stout of Clayton, wearing a cape styled suit outfit.

All fabrics used had to be made of 100 percent wool loomed in America.

Miss Walkup and Miss Hall will participate in the junior and senior division of the state competition, which will be held at Michigan State University, on Dec. 12. Winners in the state level will go on to the national event to be held in Las Vegas, Nev., Jan. 19.

More than 145 Western Michigan University alumni and students are serving, or have served in the Peace Corps.

MEN'S NEVER-IRON SUTTON-COLLAR

SPORT SHIRT

Here's the basic shirt for the fashion-wise wardrobe. It has the popular Sutton-Collar and banded button front. In 65% polyester, 35% combed cotton broadcloth. It never needs ironing. By CAMPUS, the sportswear the U. S. male wears most.



FOSTER'S MEN'S WEAR

Enjoy a holiday. Buy a Gas range.

Don't work so hard. Turn out holiday meals with beautiful ease on a new Gas range. It has everything it takes to bring out the best in food. While taking the least out of you. Things like unlimited heat settings. Instant-on and instant-off burners. Smokeless broiling. The Burner-with-a-brain. And a self-cleaning oven that does the dirty work when the parties are over. Buy a new Gas range today, and enjoy the economy and convenience of Gas, now and for years to come. New models are displayed at your appliance dealer or Michigan Consolidated showrooms. See them now and enjoy the holidays.

MICHIGAN CONSOLIDATED GAS COMPANY

An introductory offer to people who have never owned a Chrysler.

We want to introduce as many people as possible to the finest-designed, best-built Chryslers we've ever offered. So we're coming through with the Royal. A brand-new series of Chryslers. At a new low price. \$112* less than any other Chrysler series.

Coming through in a big way.

Royal is every inch a Chrysler. Uncompromisingly full-sized.

It's also a bigger car than our chief competition, Buick LeSabre and Olds Delta 88. With a roomier interior. And a bigger trunk.

A matter of inches.

Our new 360 V-8 is ten cubic inches bigger than the engines on Buick and Olds.

More important, especially in a car this size, our engine comes through with more horsepower. All on regular gas.

A difference of opinion.

LeSabre and Delta come with coil spring suspension systems. The Royal uses torsion bars.

They'll tell you coil springs are better. We'll tell you torsion bars are. Who's right?

Well, we urge you to try them both and make up your own mind.

It is interesting to note, however, that GM does use torsion bars on two models: one of the most expensive Cadillacs, and the most expensive Oldsmobile. Now are we coming through?



Embarrassing questions.

Ask your Buick or Olds dealer about options. An electric sliding sun roof?

Or a stereo cassette player available with a microphone?

In reply, all you'll get is a red face.

Built and engineered with extra care.

The Royal body is a single solid unit. Unitized with over 5000 individual welds.

The competition uses bolts to mate the body to the frame.

On a test drive, you probably wouldn't notice any difference. But the differences are there.

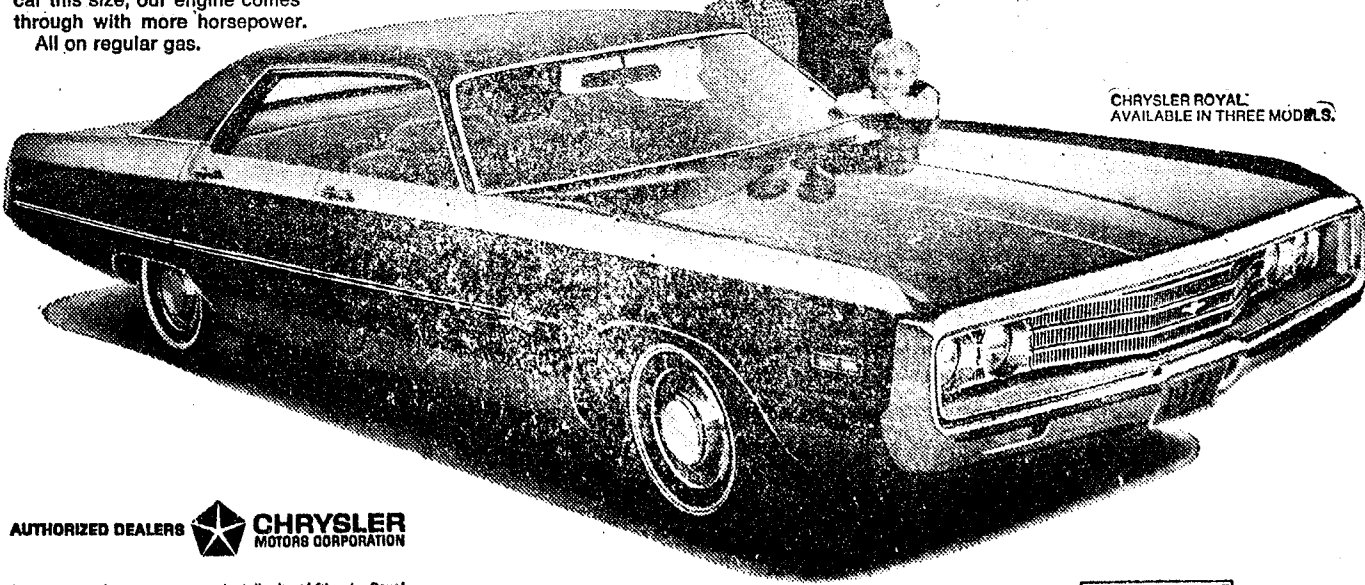
Our Unibody is stronger for one thing. It also stays tighter longer. So there is less chance of welds and seams opening up and forming rust pockets.

Another thing to remember is that Royal has no body bolts to work free and rattle after, say, a year or so of driving.

A car for people ready to move up.

Chrysler Royal. An introduction to Chrysler luxury and quality. Coming through at a price you can afford.

That's our offer. Welcome to Chrysler.



AUTHORIZED DEALERS CHRYSLER MOTORS CORPORATION

*Based on manufacturer's suggested retail price of Chrysler Royal and the same body-style Chrysler Newport with identical options. Price excludes state and local taxes and destination charges.

CHRYSLER ROYAL AVAILABLE IN THREE MODELS.

CIDAA

G. A. SALES & SERVICE • 1185 Manchester Road



Coming Through.

AGRICULTURE IN ACTION

by GARY A. KLEINHENN

Michigan Farm Bureau

★ Sorrowful Crisis

Legalize marijuana? Arguments for legalization include the fraud that the weed is non-habit forming. Habit forming, or not, the argument is absurdly irrelevant when one considers the drug leads its victim in a deadly mass querade to join an even longer line of losers using more destructive drugs.

Sorting out the losers was done by a non-profit research group who studied 6,500 addicts. The federally financed program revealed that "25 percent of the addicts followed an invariable four-step sequence toward addiction. They began with marijuana and advanced to amphetamines, or 'speed.' Then they began using barbiturates, and finally they became heroin addicts. The other 75 percent skipped one or two of the steps; the study found, but none went directly to heroin without first using one of the other drugs."

But campaigns to ban the pusher are pointed in the right direction although somewhat misguided. The professional pusher, the stereotyped slinky con man peddling slow death in a package, is a murderer; however, the study reveals that although the pusher may instigate dope use, it is the users themselves who feed the flames of this sorrowful crisis.

Friend or Foe?

The National Observer report of the study states, "Fifty-four percent started using narcotics because a friend of the same age used them. Another 30 percent were started by older friends. Pushers accounted for just 26 percent, and the remaining 14 percent began for reasons other than these."

If this is true, then it appears that many of our youth must further learn to think independently—to act on their own initiative rather than to run with the crowd.

Providing them with the right ammunition is a project of the Michigan State Police. Acting Director Lt. Col. Kaufman says that the need is great, as he reports that there is probably no school in Michigan where some student has not been involved with the use of marijuana. The MSP's current objective is getting the right information to students about damaging drugs through a liaison program with schools.

And these programs will include rural Michigan. Regardless of what people want to believe, our rural communities are not immune.

Tiger Outfielder Mickey Stanley went through the entire 1970 season without making an error in the outfield. His perfect 1,000 fielding average led the American League.

How to buy a boot



look for the all-weather button. And light weight 10" boot, only 13 ounces.

\$6.95

\$9.00



The "nearly" boot. High top work rubber covers shoe tops. Easy on, off. Only 8 ounces.

\$4.50

NEW! Women's Mukluk boot. Simulated hand stitching. Only 10 ounces.

\$6.00

**TINGLEY
FARMERS'
SUPPLY CO.**

Ph. GR 5-5511 Chelsea, Mich.

THE SUPERMARKET THAT'S JUST A LITTLE BIT BETTER

Stop & Shop

14901 Old U.S.-12
Corner at M-52
Chelsea



THE KNOW HOW OF INTELLIGENT MEAT BUYING IS REALLY THE 'KNOW WHERE'

Our customers have learned to depend on the outstanding quality of Stop & Shop meats — unfailing satisfaction with every cut they purchase. The finest quality, together with the expertise of our meat cutting experts, makes an unbeatable combination.

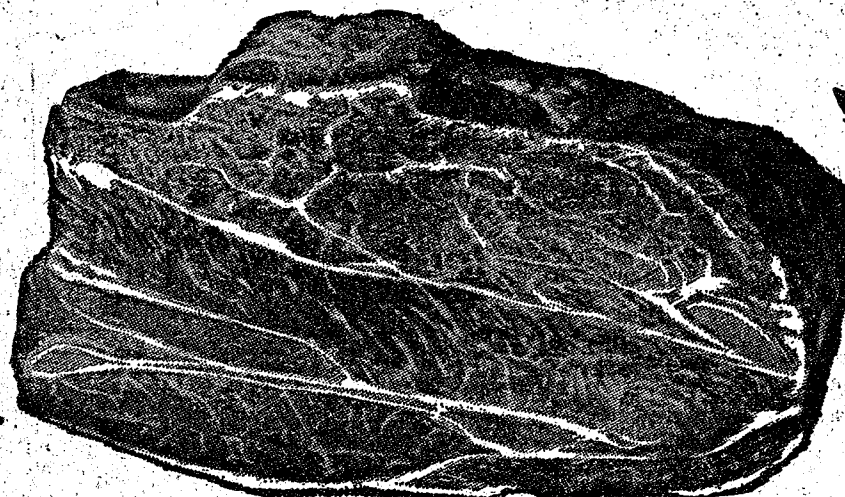
Prices effective Wednesday, December 9
through Tuesday, December 15.

"TRIPLE R FARMS" U.S.D.A. CHOICE

CHUCK ROAST

Blade
Cut

59^c lb.



"Triple R Farms" U.S.D.A. Choice

Chuck Roast

Center
Cut

69^c lb.

Lean, Tender, Boston Butt

Pork Roast

49^c lb.

Lean, Tender,

Pork Steaks

59^c lb.

Lean, Tender, Boneless & Cubed

Breaded Pork Cutlets

79^c lb.

Hygrade's Ball Park

Franks

1-Lb.
Vac. Pack

79^c lb.

Stop & Shop's

All American

BEEF

HAMBURGER

5-Lb. Units

or More

59^c lb.

"Triple R Farms" U.S.D.A. Choice

Ground Round Steak

Tender, Sliced

Beef Liver

Stop & Shop's Homemade

Pork Sausage

"Triple R Farms" Mich. Grade 1

Sliced Bologna

Lean, Tender, Center Cut

Pork Chops

Rib
End

89^c lb.

McDonald's 2% Low Fat or

Homogenized Milk

88^c

Gallon
Carton

Crispy Flake

POTATO CHIPS

38^c

14-Oz.
Bag

Golden Ripe Del Monte or

Chiquita Bananas

10^c lb.

Assorted

FAYGO POP

Qt.
Bottle

5 for \$1.00

Stop & Shop's Enriched Sliced

WHITE BREAD

5 for 98^c

1-Lb., 4-Oz.
Loaf

Fresh, Florida Sweet

TANGERINES

24^c Dozen

Heinz

KETCHUP

15^c

14-Oz.
Bottle

Enriched Flour

GOLD MEDAL

44^c

5-Lb.
Bag

McDonald's Fresh, Delicious

COTTAGE CHEESE

19^c

1-Lb.
Carton



For the next eight weeks you may purchase a 4 piece place setting of English Swirl, fine Ironstone Dinnerware for only \$1.29 and a \$5.00 purchase; all completer pieces are \$1.29 with no purchase required. An exceptional fine value — and just in time for Christmas.

4 PC. PLACE SETTING

VALUABLE COUPON

ENGLISH SWIRL IRONSTONE
DINNERWARE

4 PIECE PLACE SETTING

\$1.29

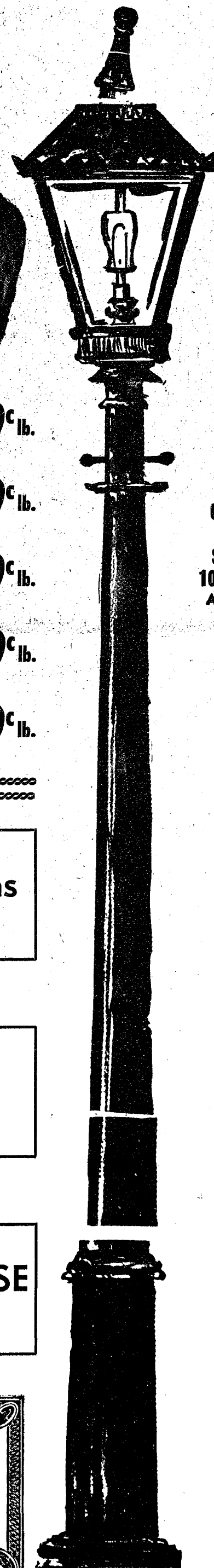
With Coupon and a \$5.00 Purchase
(Excluding Beer, Wine, Cigarettes)
LIMIT 1 PER FAMILY Expires End of Sale

WE
RESERVE
THE
RIGHT
TO
LIMIT
QUANTITIES

For Your
Convenience
**OPEN
SUNDAY**
10 a.m. - 4 p.m.
All Sale Prices
Effective
Sundays

Sorry,
No Sales
To Dealers

STORE HOURS:
Monday, Tuesday,
Wednesday
9 a.m. - 6 p.m.
Thursday, Friday
9 a.m. - 9 p.m.
SATURDAY
9 a.m. to 6 p.m.
SUNDAY
10 a.m. to 4 p.m.





ST. LOUIS SCHOOL BAND: The Rev. Father Umberto Mellare, left front, musical director at St. Louis School for Exceptional Boys, and band members performed at the Chelsea Medical Center for the patients Thursday evening, Dec. 3. Members of

the band are Wayne Kennedy, Gary Ponta, John Biewer, Rex Lawrence, Billy Adrain, John Martin, David Queen, Kevin Mach, Ronnie Rhoades, Patrick Cosgro, Jim Brantman, and Donald Verstraite.



NATIVITY SCENE was also featured at the Thursday evening performance by the boys of St. Louis school. The Rev. Father Pegoraro Germano constructed the scenery for the little scene, and all the costumes were made at the school. Pictured above are Kevin Reeside, who was an angel; Joe Vitale, as St. Joseph; and Donald Verstraite, as the Blessed Mother.

Students from St. Louis School Entertain Medical Center Patients

Students from the St. Louis School for Exceptional Boys entertained patients at the Chelsea Medical Center with a Christmas program Thursday evening, Dec. 3. The Rev. Father Umberto Mellare, musical director of the school, conducted the school band, and was responsible for the delightfully varied program which the boys gave.

The band played musical selections and the choir sang Christmas carols. One of the favorite selections given was "The Twelve

Days of Christmas," in which the choir held up cards which they had made which represented each of the 12 days.

Ponta Gary played "I'll Silen-

MICHIGAN RANKS FIRST

Michigan ranks first among states in production of dry edible beans, red tart cherries, blueberries, Eastern White winter wheat, cucumbers for pickles and hothouse rhubarb, according to Dr. George Dike, Michigan State University agricultural economist.

zio," on the trumpet, and also narrated the nativity scene, which closed the program. The scenery for the little skit was made by the Rev. Father Pegoraro Germano. All the players were in costumes made at the school.

LIKE FATHER, LIKE SON

Tiger Pitcher Joe Coleman, acquired in an off-season trade with the Washington Senators, was eight years old when his father was traded to the Tigers in 1955.

+ Services in Our Churches +

ST. PAUL UNITED CHURCH OF CHRIST
The Rev. Warner Siebert, Pastor
Thursday, Dec. 10—
9:00 a.m.—Koinonia Study Group at Alma Meserv's.
Friday, Dec. 11—
6:30 p.m.—XYZ's.
Saturday, Dec. 12—
9:00 a.m. to 12:30 p.m.—Junior High confirmation program.
10:15 a.m.—Youth Choir.
11:00 a.m.—Christmas pageant rehearsal.
Sunday, Dec. 13—
9:15 a.m.—Church school.
10:30 a.m.—Worship.
4:30 p.m.—Christmas pageant. Sermon title: "Wisemen's Light."
Wednesday, Dec. 16—
1:00 p.m.—Combined Women's Fellowship program.
7:30 p.m. to 9:00 p.m.—Choir dress rehearsal.
Thursday, Dec. 17—
7:30 p.m.—Long Range Planning Committee.

CONGREGATIONAL CHURCH
(United Church of Christ)
The Rev. Daniel Kelin, Pastor
Sunday, Dec. 13—
10:00 a.m.—Church school.
10:00 a.m.—Morning worship.

ST. MARY CATHOLIC CHURCH
The Rev. F. Francis Wahowiak
Sunday, Dec. 13—
7:30 p.m.—Mass.
Sunday, Dec. 13—
Masses at 6:30 a.m., 8:00 a.m., 10:00 a.m., and 11:30 a.m.

FIRST UNITED METHODIST CHURCH OF WATERLOO
Parks and Territorial Rds.
Mrs. Altha Barnes, Pastor
Sunday, Dec. 13—
9:15 a.m.—Morning worship.
10:15 a.m.—Sunday school.

FIRST ASSEMBLY OF GOD CHURCH
The Rev. Thode B. Thodeson, Pastor
Sunday, Dec. 13—
9:45 a.m.—Sunday school.
11:00 a.m.—Worship service.
7:00 p.m.—Evangelistic service.
Every Wednesday—
7:00 p.m.—Midweek services.

CHELSEA BAPTIST CHURCH
337 Wilkinson
Sunday, Dec. 13—
10:00 a.m.—Sunday school.
11:00 a.m.—Worship service.
Nursery care available during all services.
6:00 p.m.—Junior and Senior Baptist Youth Fellowship.
7:00 p.m.—Evening worship.
Every Wednesday—
7:30 p.m.—Bible study and prayer meeting.

VILLAGE UNITED METHODIST CHURCH OF WATERLOO
8117 Washington St.
Mrs. Altha Barnes, pastor
Sunday, Dec. 13—
10:00 a.m.—Sunday school.
11:15 a.m.—Morning worship.

ST. THOMAS EVANGELICAL LUTHERAN
The Rev. Daniel L. Mattson, Pastor
Sunday, Dec. 13—
10:00 a.m.—Worship service.
11:00 a.m.—Sunday school and bible study.

FIRST CHURCH OF CHRIST, SCIENTIST
1883 Washtenaw Ave., Ann Arbor
Sunday, Dec. 13—
10:30 a.m.—Sunday school.
10:30 a.m.—Morning service.
Lesson-sermon: "God the Preserver of Man."

CHURCH OF CHRIST
1861 Old US-12, East
R. D. Parnell, Minister
Sunday, Dec. 13—
10:00 a.m.—Church school.
11:00 a.m.—Worship service.
6:00 p.m.—Worship service.
Every Wednesday—
7:30 p.m.—Bible Study.

FIRST UNITED METHODIST CHURCH
The Rev. Clive Dickins, Pastor
Sunday, Dec. 13—
9:00 a.m.—Church school (nursery-adult).
10:00 a.m.—Church school (Nursery-2nd grade).
10:00 a.m.—Worship service.
Dr. Allen B. Regan, guest speaker.
2:00 p.m.—Crusade visitation.
Tuesday, Dec. 15—
8:30 p.m.—Victory Rally for Crusade.
Wednesday, Dec. 16—
9:00 a.m.—Sarah Circle.
1:00 p.m.—Phoebe Circle, Education Unit.
12:30 p.m.—Ruth Circle, potluck in Social Center.

ZION LUTHERAN CHURCH
Corner of Fletcher, Waters Rds. (Rogers Corners)
The Rev. John R. Morris, Pastor
Sunday, Dec. 13—
9:00 a.m.—Sunday school.
10:15 a.m.—Worship service.
Monday, Dec. 14—
7:15 p.m.—Junior Choir.
8:00 p.m.—Senior Choir.

IMMANUEL BIBLE CHURCH
145 E. Summit St.
The Rev. Frank C. Frinkle
Sunday, Dec. 13—
9:45 a.m.—Sunday school, nursery provided.
11:00 a.m.—Morning worship, nursery provided.
7:00 p.m.—Evening service.
Every Wednesday—
Family hour, prayer meeting and Bible study.

NORTH LAKE UNITED METHODIST CHURCH
The Rev. Frederick Atkinson, Pastor
Sunday, Dec. 13—
9:30 a.m.—Worship service.
10:30 a.m.—Sunday school.

CHELSEA MEDICENTER
Sunday, Dec. 13—
12:30 p.m.—Sunday worship service.

METHODIST HOME CHAPEL
The Rev. R. L. Clemans, Chaplain
V. O. Johnson, Administrator
Sunday, Dec. 13—
8:45 a.m.—Worship service.

GREGORY BAPTIST CHURCH
The Rev. Grant Lapham, Pastor
Sunday, Dec. 13—
10:00 a.m.—Worship service.
11:15 a.m.—Church school.
6:30 p.m.—Baptist Youth Fellowship.
7:30 p.m.—Evening worship service.

BETHEL EVANGELICAL AND REFORMED CHURCH
(United Church of Christ)
Freedom Township
The Rev. Roman A. Reineck
Sunday, Dec. 13—
10:00 a.m.—Worship.
10:00 a.m.—Sunday school.

ST. JOHN'S EVANGELICAL AND REFORMED CHURCH
(United Church of Christ)
Francisco
The Rev. Robert Townley
Sunday, Dec. 13—
10:00 a.m.—Worship service.
10:20 a.m.—Sunday school.

ST. JACOB EVANGELICAL LUTHERAN CHURCH
12501 Reithmiller Rd., Grass Lake
The Rev. Andrew Bloom, Pastor
Sunday, Dec. 13—
9:00 a.m.—Sunday school.
10:15 a.m.—Divine services.

SALEM GROVE UNITED METHODIST CHURCH
The Rev. Frederick Atkinson, Pastor
Sunday, Dec. 13—
10:00 a.m.—Sunday school.
11:00 a.m.—Worship service.

ST. BARNABAS EPISCOPAL CHURCH
20500 Old US-12
The Rev. C. Walton Fitch, Vicar
Telephone 428-8815
Sunday, Dec. 13—
9:15 a.m.—Holy Communion, first, third and fifth Sundays.
9:15 a.m.—Morning Prayer second and fourth Sundays.

OUR SAVIOR LUTHERAN CHURCH
Rebekah Hall, 1194 M-52
The Rev. William H. Keller, Pastor
Sunday, Dec. 13—
9:15 a.m.—Sunday school and Youth Bible Class.
10:30 a.m.—Worship Service.
Every Thursday—
6:30 p.m.—Youth Confirmation Class.

NORTH SHARON COMMUNITY BIBLE CHURCH
Sylvan and Washburn Rds.
The Rev. William Enslin, Pastor
Sunday, Dec. 13—
10:00 a.m.—Sunday school.
11:00 a.m.—Worship service.
6:30 p.m.—Young People's service.
Every Wednesday—
7:30 p.m.—Prayer meeting.

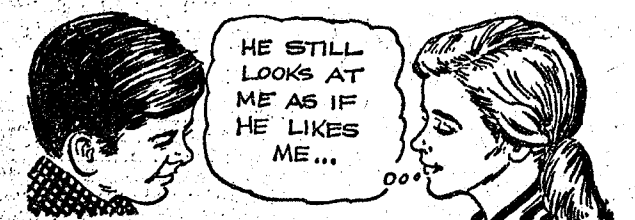
ST. JOHN'S EVANGELICAL AND REFORMED CHURCH
(United Church of Christ)
Rogers Corners
The Rev. David J. Kleis
Sunday, Dec. 13—
9:30 a.m.—Sunday school.
10:30 a.m.—Morning worship.

FIRST UNITED PRESBYTERIAN CHURCH
Unadilla
The Rev. T. H. Liang
Sunday, Dec. 13—
9:45 a.m.—Sunday school.
11:00 a.m.—Worship service.
Every Tuesday—
8:00 p.m.—Choir practice.

DON'T SHOCK PLANTS
Tap water runs pretty cold during winter, so it's best to use water at room temperature to avoid shocking your plant collection. Use enough water, at the same time each day, to leach harmful salt accumulations out through the porous sides of your clay pots.

Washtenaw Community College
ALL CLASSES ON NEW HURON CAMPUS

For And About Teenagers



THE WEEK'S LETTER:

"I have a big problem about my ex-boyfriend. I am 17, so is this boy. When we were courting, he would tell me he loves me. I have a cousin who doesn't like me. She would get this boy behind my back and ask him how he felt about me. He would tell her he really didn't care for me. When I asked him about it he told me he said it because he didn't like for anyone to know who his girlfriends are. When we are together, he acts as if he loves me, but when she is around he doesn't. I love him, but I don't think he loves me. Another cousin, a boy, told me my ex-boyfriend

told him that he really cared for me. I still don't believe it. We broke up sometime ago and he has another girlfriend. She still looks at me as if he likes me, but we never say anything to each other. What shall I do?"

OUR REPLY: If you get back together again, be your own judge in the matter of whether or not he loves you or likes you and how much. Don't have people asking him for you. Some boys do resent people always asking them, "Do you like so-and-so You can tell, by his attitude, by the things he says and what he does, how he really feels about you."

SUNDAY'S SERMON

★ What's Wrong?

It is easy for most of us to see what is "wrong" with the world in which we live. Newspaper headlines, television programs, the events of our daily lives frequently remind us that things are far from perfect.

What we tend to forget is that the world has never been perfect. And yet, it has never been without hope. Hope is an eternal promise, spoken eloquently in the life and teachings of Jesus centuries ago.

Hope is found in the universal message of God's love for all mankind. Therein, too, is truth, as solid as the unchanging story of that One Solitary Life upon earth.

Turn your thoughts to God. See what goodness surrounds you everywhere. Find faith with yourself, for yourself, and you will not despair that all is not perfect around you.

HELP STAMP OUT



DRIVING WORRIES

Join AAA Today

For Information Call...
RAY JOHNSTON
Phone 769-5000
1200 S. Main Ann Arbor, Mich.

CLARK BUSHNELL FLOOR COVERING SERVICE

Linoleum - Tile
Kitchen Carpet
Sales & Installation

For Samples and Free Estimates
CALL CHELSEA
475-7180

Some handy information about new phone rates within Michigan.

They're simpler.
With the chart below, for instance, you can figure out what it will cost to call any number in the state. Any number outside of your local calling area.

Four things determine what you pay:
How far you call within Michigan.
How long you talk.
Whether an operator calls the number or you dial it yourself.
The time and day.

And the rates are more fair.
Look at the chart again. Notice that you're now charged for "each" minute you use the phone. (Before, you'd pay for no less than 3 minutes. Whether you used them all or not.)

Also notice that you're given discounts for dialing direct rather than using an operator.

Both of these changes were made for one reason. People should only be asked to pay for what they use. Fair? Fair.

Handy cut-out for future reference.

Long Distance rates within Michigan

| How long a distance (Miles) | Basic rate per minute if an operator places your call. (a) | Discount rate per minute if you dial direct. (b) |
|-----------------------------|--|--|
| 0-20 | 5¢ | 20% off. (c) 40% off. (d) |
| 21-25 | 10¢ | 3¢ |
| 26-30 | 15¢ | 6¢ |
| 31-50 | 20¢ | 9¢ |
| 51-100 | 25¢ | 12¢ |
| 101-200 | 30¢ | 15¢ |
| Over 200 | 35¢ | 18¢ |

(a) Includes the following types of operator-handled calls: credit card, collect, billed to a third party, calls from coin stations. Person to person calls. There is a 50¢ operator service charge in addition to basic rates.
(b) Areas of Michigan without dial direct service also get these discounts.
(c) If you dial direct between 7 AM-5 PM, Monday through Friday; 5 PM-11 PM Sunday.
(d) If you dial direct between 5 PM-7 AM, Monday through Friday. On weekends, 5 PM Friday to 5 PM Sunday, and from 11 PM Sunday to 7 AM Monday. And on New Year's, Independence Day, Labor Day, Thanksgiving, and Christmas.

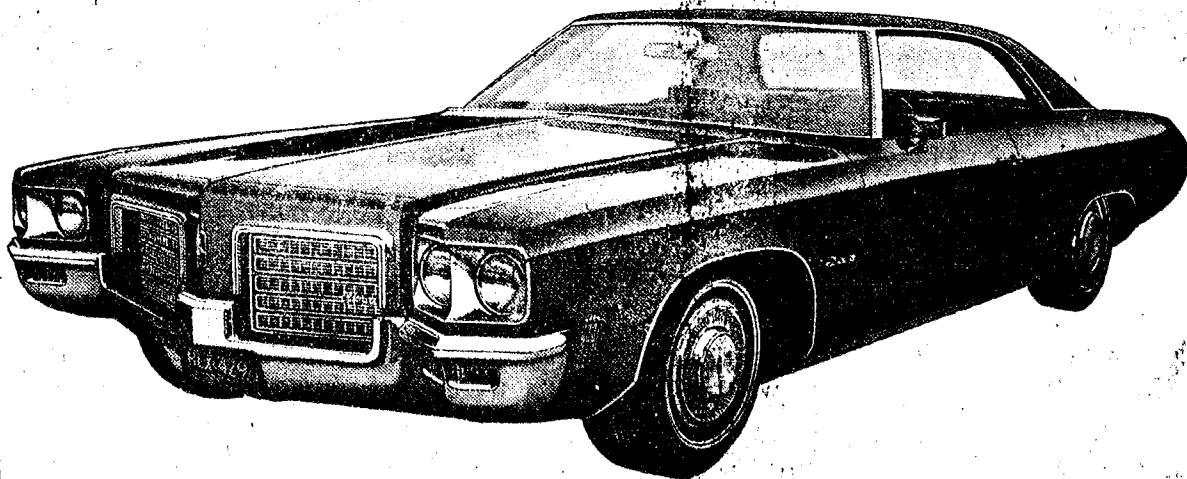
For interzone calls around Detroit, Pontiac, and Grand Rapids.

| How long a distance (Miles) | Basic rate per minute if an operator places your call. (a) | Discount rate per minute any time you dial direct. 40% off. |
|-----------------------------|--|---|
| 0-20 | 5¢ | 3¢ |
| Over 20 | 10¢ | 6¢ |

(a) Person to person calls. There is a 50¢ operator service charge in addition to basic rates. Above rates are plus tax, where applicable.

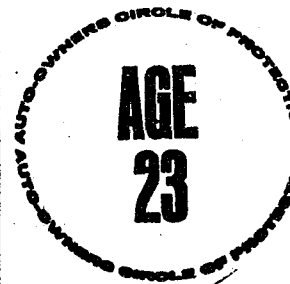
IT'S OLDS "CATCH-UP" TIME!

'71 Delta 88s are rolling in... and Olds dealers are out to catch up!
Great time to move into the big-car world of Olds!



Oldsmobile Delta 88: all-new styling... exclusive new "G-Ride" System. Power steering and front disc brakes, standard. Solid comfort from a new full-foam molded front seat. See your Olds dealer today!

Oldsmobile
ALWAYS A STEP AHEAD



Married Male Driver

Your A-O man will save you money on your car insurance. No surcharge or higher rate. See your A-O man — he's all out for you.

A. D. MAYER AGENCY, INC.

"Your Protection Is Our Business"
Phone 479-5061

115 Park St. Chelsea

Auto-Owners INSURANCE COMPANY





BOWLING NEWS



Rolling Pin League

Standings as of Dec. 8

| | W | L |
|----------------|--------|--------|
| Kookie Kutters | 35 1/2 | 16 1/2 |
| Grinders | 35 | 17 |
| Moppy Uppers | 30 | 22 |
| Spooners | 31 1/2 | 20 1/2 |
| Coffee Caps | 31 | 20 |
| Beer Beaters | 28 | 24 |
| Kitchen Kapers | 27 | 25 |
| Pfys | 22 | 30 |
| Jolly Mops | 20 | 32 |
| Brooms | 20 | 32 |
| Mixers | 19 | 33 |
| Dish Rags | 15 | 37 |

400 and over series: D. Butler, 458; K. Brettschneider, 412; D. Kinsey, 470; T. Steinaway, 466; W. Landwehr, 404; E. Reynolds, 450; J. Rabbitt, 485; P. Harook, 452; S. Parker, 404; K. Del Priest, 414; L. Keeser, 407; J. Priest, 440; L. Orlovski, 427; J. Lewis, 443; G. Klink, 472; C. Shepherd, 448; P. Foster, 413.

140 and over games: T. Steinaway, 172, 189; J. Johnson, 149; D. Butler, 173, 171; K. Brettschneider, 151; P. Patterson, 140; D. Kinsey, 173, 162; W. Landwehr, 150; E. Reynolds, 140, 168; J. Rabbitt, 167, 164; P. Harook, 153, 161; P. Borders, 159; S. Parker, 141; K. Del Priest, 168; L. Keeser, 145; J. Priest, 149; L. Orlovski, 145; J. Lewis, 141; L. Klink, 148; G. Klink, 147; C. Shepherd, 144; R. Foster, 159; J. Shepherd, 142.

Splits converted: C. Shepherd, 5-10 and 6-10; J. Shepherd, 4-7; J. Edick, 4-10; J. Myers, 5-6; S. Parker, 6-10; L. Keeser, 6-10; B. Slater, 4-7; K. Del Priest, 6-10; E. Reynolds, 3-10; P. Harook, 6-7; J. Johnson, 5-6-7; T. Steinaway, 3-10; T. Jarvis, 3-10.

Charlie Brown's

Peanut League

Standings as of Dec. 5

| | W | L |
|-----------------|----|----|
| Eagles | 27 | 9 |
| Crazy Chryslers | 24 | 12 |
| Wipe Outs | 22 | 14 |
| Road Runners | 21 | 15 |
| Snoopy Stars | 13 | 23 |
| Banana Splits | 1 | 35 |

Games over 70: G. Packard, 89; D. Alber, 82, 73; B. Klobachar, 70; D. Wilson, 81; J. Verwey, 123; R. Ostrander, 107, 81; D. Bowen, 86, 114; J. Boyer, 74, 77; M. Foster, 91; S. Wilson, 77; B. Haaler, 88, 81; D. Waldyke, 78, 70; D. Boyer, 72, 97; D. Seyfried, 73, 75; M. Dickinson, 77.

Series over 140: B. Hasler, 179; D. Waldyke, 148; B. Boyer, 140; H. Seyfried, 148; R. Ostrander, 188; D. Bowen, 200; J. Boyer, 151; M. Foster, 155; S. Wilson, 145; D. Wilson, 150; J. Verwey, 222; M. Dickinson, 144; D. Alber, 155; G. Packard, 169.

Nite Owl League

Standings as of Dec. 7

| | W | L |
|----------------------|--------|--------|
| Steele's Heating | 36 1/2 | 15 1/2 |
| Foster's Men's Wear | 32 1/2 | 19 1/2 |
| Mid-State Finance | 31 | 21 |
| Smith's AAA | 31 | 21 |
| Cavanaugh Lake Store | 31 | 21 |
| Waterloo | 25 | 27 |
| Heller Electric | 23 | 29 |
| Jack & Son Barbers | 22 | 30 |
| Pump & Pantry | 22 | 30 |
| The Prof's | 21 | 31 |
| Wahl's Arco Sparks | 19 | 33 |
| McCalla Mobile Feeds | 13 | 34 |

500 series: T. Steele, 508; J. Elliott, 581; G. Zander, 554; G. Packard, 582; R. Smith, 525; M. Packard, 525; W. Maier, 514; C. Stapish, 507; P. Baries, 505.

200 games: T. Steele, 215, 211; G. Zander, 213; J. Elliott, 212; M. Gage, 207; R. Smith, 200.

SO CLOSE
Tiger Pitcher Joe Niekro lost a no-hitter in the 9th inning in 1970 against the Yankees.

Chelsea Women's

Bowling Club

| | W | L |
|----------------------|--------|--------|
| Chelsea Milling | 39 1/2 | 12 1/2 |
| Jiffy Mixers | 33 | 19 |
| Foster's | 31 | 21 |
| Chelsea Lanes | 30 | 22 |
| Parish's Cleaners | 29 1/2 | 23 1/2 |
| The Pub | 29 | 23 |
| Wolverine Bar | 25 | 27 |
| N. American Rockwell | 22 | 30 |
| Chelsea Grinding | 22 | 30 |
| The Ugly Ducklings | 18 | 34 |
| Norris Electric | 17 | 35 |
| Schneider's Grocery | 16 | 36 |

450 series or over: B. Fritz, 549; J. Norris, 519; B. Parish, 510; D. Alber, 495; P. Fitzsimmons, 490; P. Poertner, 480; K. Chapman, 478; A. Turner, 465; K. Covert, 457; A. Alexander, 451.

150 games or over: B. Fritz, 184, 207, 158; J. Norris, 154, 198, 187; B. Parish, 208, 173; D. Alber, 151, 166, 178; P. Fitzsimmons, 182, 168; P. Poertner, 198; K. Chapman, 186, 154; A. Turner, 164, 152; K. Covert, 176; A. Alexander, 172; H. Rothfuss, 182; D. Fletcher, 161; A. Fahrner, 158; J. Rowe, 163; A. Boham, 170; D. Eisenman, 165; M. Eder, 167; C. Stoffer, 162; 156; A. Sindlinger, 181; R. Hummel, 151, 180; A. Knickenbocker, 159; N. Kern, 151; S. Mahaney, 168, 158; M. Sutter, 152; R. DeFries, 172; S. Klink, 167, 182; D. Popovich, 153; L. Orlovski, 155; N. Popovich, 163, 182; C. Newman, 167; C. Bradbury, 150.

P. Fitzsimmons had an all spare game of 182.

The Do Something

About League

Standings as of Dec. 8

| | W | L |
|-------------------|--------|--------|
| The Abortions | 52 | 29 |
| The Pushers | 53 | 38 |
| The Revolutionist | 46 1/2 | 44 1/2 |
| The Environment | 41 1/2 | 49 1/2 |
| The Vandals | 37 | 54 |
| The Crime | 33 | 58 |

Games 190 and over: Brian Kane, 193; Neil Packard, 202; Gary White, 222, 199; Dennis White, 204, 192, 210; Tom Steele, 214; Tom Henricks, 215; Wendell Kruse, 190; Tom Thistle, 195; Barry Boone, 209, 213; Jack Risner, 214; Dave Clark, 195; Dennis Kite, 212, 208; Don Wood, 193.

Series of 575 and over: Barry Boone, 579; Jack Risner, 568; Dennis Kite, 596; Gary White, 609; Dennis White, 608.

Tri-City Mixed League

Standings as of Dec. 8

| | W | L |
|-----------------------|----|----|
| Chelsea Cleaners | 35 | 21 |
| Jiffy Mixers | 35 | 21 |
| Stivers Odd Balls | 34 | 22 |
| Trail Blazers | 33 | 23 |
| Wolverine Early Birds | 32 | 24 |
| Village Beauty Salon | 30 | 26 |
| Tall & Small | 27 | 29 |
| Smith's Mobil | 25 | 31 |
| 3-D Sales & Service | 25 | 31 |
| Sprague Buick & Olds | 23 | 33 |
| Ford Mobil | 20 | 36 |
| 4-W's | 17 | 39 |

200 games, men: G. Allen, 208; E. Harook, 214; H. Kunzelman, 205, 202; D. Weston, 227; T. Wisniewski, 203, 222, 204; R. Worden, 158.

150 games, women: V. Allen, 151, 170; G. Detling, 151; B. Fike, 161, 156; D. Fouty, 198; B. Marsh, 152; B. Parish, 157, 180; C. Peterson, 156; M. Reagle, 168, 156; C. Stoffer, 187; D. Watkins, 155; M. Weston, 161; D. Worden, 158.

450 series, women: V. Allen, 458; D. Fouty, 488; B. Parish, 482; M. Reagle, 458.

Junior House League

Standings as of Dec. 8

| | W | L |
|---------------------|----|----|
| Chelsea Drug | 64 | 27 |
| The Pub | 62 | 29 |
| Inverness Inn | 55 | 36 |
| J & S Tool | 53 | 38 |
| Smith's AAA Service | 48 | 43 |
| Palmer T-Birds | 43 | 48 |
| Boyer Automotive | 43 | 48 |
| Gambles | 40 | 51 |
| 3-D Sales & Service | 39 | 52 |
| Jiffy Mix | 35 | 56 |
| Wolverine No. 2 | 35 | 56 |
| Wolverine No. 1 | 28 | 63 |

Over 200 games: M. Sweet, 202, 230, 225; A. Clemes, 209; J. Tama, 238, 203; L. Hughes, 218; S. Policht, 219, 229; O. Johnson, 218; J. Myning, 224; R. V. Wor, 218; L. Fahrner, 200; N. Fahrner, 238; R. Ringer, 200; A. Fleischmann, 227; R. Kite, 203; D. Kite, 209, 207; J. Harmon, 206; N. Packard, 204; T. Dittmar, 204; R. Schenk, 231.

Over 600 series: M. Sweet, 603; J. Tama, 629; S. Policht, 619; G. Burnett, 510; J. Yocum, 591; A. Clemes, 582; O. Johnson, 582; B. Johnson, 584; J. Myning, 587; R. V. Worden, 555; D. Eder, 519; J. Harook, 583; L. Fahrner, 528; G. Weir, 503; N. Fahrner, 584; R. Ringer, 522; D. Casterline, 519; R. Erskine, 561; F. Dickenson, 528; A. Fleischmann, 533; G. Deyoe, 513; J. Poertner, 503; R. Kite, 584; D. Kite, 562; J. Harmon, 506; N. Packard, 540; T. Dittmar, 559; R. Schenk, 568; C. Koengeter, 602.

Chelsea Suburban

Standings as of Dec. 2

| | W | L |
|----------------------|--------|--------|
| Ford Mobil | 37 | 19 |
| Dancers | 36 | 20 |
| Dairy Queen Braizers | 31 1/2 | 24 1/2 |
| State Farm | 31 | 25 |
| Dana, Corp. | 30 | 26 |
| Chelsea Lanes | 28 1/2 | 27 1/2 |
| Artex Roll-On | 28 | 28 |
| Waterloo Garage | 26 | 30 |
| Patty Ann | 23 | 33 |
| G. A. Sales | 23 | 33 |
| Chelsea State Bank | 22 | 34 |
| Pittsfield Plastics | 20 | 36 |

150 games and over: L. Jarvis, 152; D. Keeser, 150, 168; N. Packard, 188, 155, 162; A. Wood, 168; V. Harvey, 151; A. Hocking, 152, 162, 160; P. Harook, 163; D. Kinsey, 167, 151; V. Stewart, 177; C. Peterson, 160, 171; M. Westcott, 181, 152, 177; R. Klink, 161; B. Hafley, 163; R. West, 156; R. McGibney, 153; K. Snyder, 153; J. Eder, 154; B. Eder, 221, 182; S. Bowen, 153; D. Sannes, 154, 156; G. Wilkerson, 171; B. Smith, 158; N. Prater, 154; G. Baczynski, 161, 160, 155; B. Beeman, 157.

425 series and over: B. Smith, 425; G. Baczynski, 466; B. Eder, 542; S. Bowen, 428; D. Sannes, 458; B. Hafley, 427; R. West, 445; R. McGibney, 429; K. Snyder, 426; C. Peterson, 471; M. Westcott, 510; V. Harvey, 440; A. Hocking, 464; D. Kinsey, 460; D. Keeser, 449; N. Packard, 515.

Senior House League

Standings as of Dec. 7

| | W | L |
|----------------------|----|----|
| Chelsea Cleaners | 39 | 13 |
| Sam's Barbers | 30 | 22 |
| Schneider's Grocery | 30 | 22 |
| Spaulding Chevrolet | 29 | 19 |
| Dana No. 1 | 28 | 24 |
| Seltz Tavern | 28 | 24 |
| Wolverine Tavern | 26 | 26 |
| Sylvia Center | 26 | 26 |
| Dana No. 2 | 25 | 27 |
| The Pub Bar | 21 | 31 |
| Chelsea Grinding | 14 | 38 |
| Murphy's Barber Shop | 12 | 40 |

600 series and over: R. Fike, 627; L. Hess, 614; J. Warmingham, 609.

500 series and over: R. Bauer, 598; R. Spaulding, 580; W. Cruise, 572; A. Sannes, 566; D. Coppernoll, 566; H. Burnett, 566; S. Haydock, 563; G. Lawrence, 563; G. Burnett, 562; S. Dyer, 562; A. Clemes, 556; C. Genske, 555; S. Hopkins, 546; D. McKinley, 542; M. Poertner, 538; O. Johnson, 537; G. Linebaugh, 537; D. White, 538; K. Larson, 536; G. Padgham, 528; T. Wisniewski, 527; F. Gee, 527; T. Weston, 520; J. D. West, 520; A. Fletcher, 519; R. Hutzel, 515; W. Moss, 513; G. McAtee, 513; E. Harook, 511; D. Weatherwax, 510; R. Devine, 504; C. Parish, 500; A. Fleischmann, 500.

200 games and over: W. Cruise, 240; S. Hopkins, 237; R. Spaulding, 224; J. Warmingham, 219; L. Hess, 218, 203; O. Johnson, 217; R. Fike, 212, 213, 202; A. Clemes, 213; D. Coppernoll, 212; G. Lawrence, 211, V. Hafley, 210;

D. EDWARDS & SON

Home Maintenance Service

Vinyl or Aluminum SIDING • WINDOWS DOORS
Roofing • Roof Repair
— ALSO —
Building Maintenance and Supplies

Phone Chelsea 479-4231
or Napoleon 536-4843

Hi Point Mixed

Standings as of Dec. 8

| | W | L |
|---------------------|-----|-----|
| Holy Terrors | 283 | 221 |
| Johnston & Johnston | 286 | 238 |
| Deadnoughts | 250 | 254 |
| MJH | 245 | 259 |
| Hi Steppers | 239 | 265 |
| Turn Abouts | 229 | 275 |

Men, 450 series and over: H. Morton, 528; E. Johnston, 451; D. Johnston, 464.

Men, 160 games and over: D. Johnston, 182; F. Steers, 170; H. Morton, 160, 201, 167.

Women, 425 series and over: J. Hafner, 433; L. Rivers, 454; B. Barth, 444; S. DeSmith, 475; D. Collins, 475.

Women, 150 games and over: L. Rivers, 169; B. Barth, 175; J. Hafner, 151; D. Collins, 178; S. DeSmith, 183.

Charlie Brown & Snoopy's Friends

Prep Division

Standings as of Dec. 5

| | W | L |
|----------------------|--------|--------|
| The Bully Brothers | 29 | 7 |
| The Pin Fighters | 25 1/2 | 10 1/2 |
| The Pink Panthers | 21 | 15 |
| Tremendous Strikers | 20 | 16 |
| Competers | 19 | 17 |
| The Partridge Family | 19 | 17 |
| Strikers | 18 | 18 |
| Good Guys | 17 1/2 | 18 1/2 |
| Creamators | 18 | 20 |
| The Brains | 13 | 23 |
| Red Barons | 12 1/2 | 23 1/2 |
| Fruitie Tooties | 8 1/2 | 24 1/2 |

Games of 100 or over: R. Weiner, 121, 119; M. Boyer, 100; D. Alexander, 103; P. Greenleaf, 110, 130; S. Smyth, 104; K. Mshar, 104; J. Alexander, 122, 112; B. Rosentreter, 128, 129; J. Spaulding, 104, 106; D. Craft, 103, 120; B. Edick, 101; M. Schnaidt, 120; M. Fahrner, 109, 114; K. Toon, 509; D. Paden, 504.

Men's 175 or over games: D. Walton, 198; R. Mook, 189; J. Eder, 182, 201; J. Collins, 177, 191; L. Degen, 178; D. Fritz, 193; T. Steele, 188, 209; R. Huston, 193, 191, 187; J. Elliott, 191, 192.

Men's 500 or over series: T. Steele, 569; R. Huston, 571; J. Elliott, 543; J. Eder, 551; J. Collins, 525; R. Mook, 508.

127; D. Beaumont, 142; M. Bowen, 108, 114; B. Lewis, 100; C. Sannes, 128, 121; S. Lyerla, 109; D. Morrison, 107; J. Toon, 103; D. Alber, 160, 148; M. Foster, 148, 120; S. Bowen, 120, 114; J. Boyer, 110; J. Collins, 108; M. Burnett, 138; B. Lovely, 114; A. Kallshek, 111.

Series of 200 or over: R. Weiner, 240; P. Greenleaf, 240; K. Mshar, 209; J. Alexander, 234; B. Rosentreter, 255; J. Spaulding, 210; D. Craft, 223; M. Fahrner, 223; K. Toon, 207; D. Beaumont, 237; M. Bowen, 222; C. Sannes, 249; S. Lyerla, 200; D. Alber, 308; M. Foster, 268; S. Bowen, 234; J. Boyer, 204; J. Collins, 206; M. Burnett, 219.

Old Timers

Bowling League

Standings as of Dec. 5

| | W | L |
|---------------------|--------|--------|
| Team No. 16 | 24 1/2 | 21 1/2 |
| Hotzel Service | 23 | 23 |
| Nelson Realtors | 22 1/2 | 23 1/2 |
| Dexter Bowl 'n' Bar | 22 | 24 |
| Colonial Lanes | 21 1/2 | 24 1/2 |
| Mather Co. | 20 | 26 |
| Sanford Security | 20 | 26 |
| Sportsman's Bar | 20 1/2 | 26 1/2 |
| Cloverleaf Lanes | 20 1/2 | 26 1/2 |
| Team No. 14 | 20 1/2 | 26 1/2 |
| Stein & Guetz | 20 1/2 | 26 1/2 |
| Hartman Ins. | 20 | 31 |
| Bob & Otto Standard | 24 | 32 |
| Has Been's | 23 1/2 | 32 1/2 |
| Lucky 13 | 22 | 34 |
| Merkel Furniture | 19 | 37 |

High team game and series: Has Beens, 854 and 2,487.

High ind. game and series: Arthur Frank, 223 and 553.

Other 200 games and 500 series and over: G. Lawrence, 220-543; R. Atkins, 209-510; G. Hepler, 200; R. Carpenter, 549; W. Butzling, 531; L. Menerey, 527; W. Fish-Block, 515; J. Zucco, 514; G. Haines, 509; D. Paden, 504.



Standard Ads Are a Good Shopping Guide!

ONLY

THE GOOD GUYS HAVE IT! (THE SWEPTLINE AUTOMATIC)



YOGURT IS OLD-TIMER

Yogurt, relative newcomer to this country, has been around for at least 2,000 years. Today it comes to market in fruit flavors—strawberry, blueberry and raspberry, as well as plain.



personalized
photography

... because your wedding
is unique.

ann arbor 769-0053

Chelsea Youth Graduates From Northrop Institute

William Ray McFall, son of Mr. and Mrs. Arthur Lindauer, 280 Fletcher Rd., was graduated from Northrop Institute of Technology school of aviation maintenance, in Inglewood, Calif.

A 1967 graduate of Ann Arbor High school, McFall was awarded a certificate of completion in the airframe and power plant curriculum, and is now eligible to take the Federal Aviation Administration examinations for the airframe and powerplant certificate.

Northrop Institute of Technology is an independent senior college of engineering. Of its 2,000 students, 700 are enrolled in the school of aviation maintenance, 1,300 are enrolled in programs leading to bachelor of

science degrees or associate in applied science in several fields of engineering.

Northrop Tech is accredited as a senior institution by the Western Association of Schools and Colleges. Students come from the 50 states and 58 foreign countries.

USDA findings show that beef, pork, lamb, veal, poultry, fish and eggs contribute over 40 percent of the protein in the national diet. Beef ranked highest in consumption, followed by pork. The meat group supplied about one-third of the total iron consumed. Liver supplied 11 1/2 percent of the total vitamin A intake and pork provided 14 percent of the total thiamin in the diet.

4-H Clubs

WIDE AWAKE

Wide Awake 4-H club meeting was held at the home of Elaine and Lois Koch on Dec. 5.

Achievement certificates were passed out, and plans were made for the Christmas party, which will be held Dec. 22 at the home of Elaine and Eleanor Musolf. The club will go caroling at 7 p.m.

Jan. 9 meeting will be held at the home of Elaine and Janet Schenk.

Christmas tray favors were made for the Methodist Home.

New officers for this year are Mary Niehaus, president; Eleanor Musolf, vice-president; Karen Kennedy, secretary; Elaine Musolf, treasurer.

Meeting was adjourned, and refreshments were served by the hostess.

Karen Kennedy, secretary.

FREER ACRES

Freer Acres 4-H club met at the home of Mrs. Robert Daniels Tuesday night, Dec. 8.

Mrs. Daniels helped with sewing problems and gave many helpful hints.

The girls broke up into committees for the Christmas party. A reminder was given that the Christmas party date has been changed from Dec. 15 to Dec. 16. It will be at the home of Sue Palmer.

There will be no meeting on the preceding Tuesday. Girls are reminded not to forget their Christmas decorations.

Diane Robbins, secretary.

TERRIFIC TAILORS

Annual Christmas party of the Terrific Tailors 4-H club was held Dec. 5 at the home of the leader, Mrs. Donna Hughes. Laura DeForge was hostess.

As a Christmas project, the club had been caroling at the Washtenaw County Farm Hospital that morning in Ann Arbor. This was followed by lunch, and a program of activities planned by the hostess. Gifts were exchanged, and each girl told of her biggest Christmas wish.

Next business meeting will be at the home of Janice and Karen Schramm. The date is yet to be announced.

Janet Wackenhut, scribe.

A Diploma For You

NEVER
TOO
LATE!

WASHTENAW
COMMUNITY
COLLEGE



MAY WEDDING: Mr. and Mrs. Robert L. Bauer of 375 Freer Rd., Chelsea, announce the engagement of their daughter, Linda Dianne to William C. Pearsall, son of Mr. and Mrs. Fred Pearsall of 34 Sycamore Dr., Chelsea. The bride-elect is a 1970 graduate of Chelsea High school and is secretary for Grohmer & Parker, attorneys at law. The bridegroom is a 1968 graduate of Chelsea High school and is employed at Binders in Ann Arbor. He is presently taking classes at Washtenaw Community College. A May wedding is being planned.

Camera Club Sees Slides of Papsdorf's Trip to Orient

Mr. and Mrs. Paul Papsdorf were guest speakers at the monthly meeting of the Chelsea Camera Club which was held Tuesday evening, Dec. 8. They showed slides of their recent trip to the Orient.

The Papsdorfs had traveled by air from San Francisco to Anchorage, Alaska, to Tokyo, Osaka, Bangkok, and Thailand. Enroute they visited Expo 70, and the beautifully landscaped grounds surrounding Chiang Ki Chek's residence.

They passed close to the Communist China border. The Buddhist shrines with their varying designs of architecture were also shown.

The trip lasted 21 days, and many of the days were rainy. Because of all the rain, the area was very lush and green.

Next meeting will be Jan. 19. Alvin Reinhardt will be in charge of the program. Members are to bring slides taken during the Christmas holidays.

Reception Honors Michael Kushmaul on Return from Germany

Mr. and Mrs. Michael Kushmaul were honored at a reception held Sunday, Dec. 6, at the American Legion Hall in Chelsea. The Kushmauls, who were married one year ago in Bicester, England, have just returned to the United States following what was for Michael a three and one-half year tour of duty abroad with the United States Air Force.

Mrs. Kushmaul, who is from Bicester, England, met Michael while he was stationed in England. The couple's most recent home has been Germany, where they have lived for the past 10 months.

The young couple lives presently at 485 Cavanaugh Lake Rd., at the home of Mrs. Donna Kushmaul, while the 1968 Chelsea High school graduate looks for work.

Minding one's own business has never hurt anyone.



Looking for
an
**UNUSUAL
GIFT?**

Your search
has ended
when you
shop at the

**TAIL
FEATHER
BOUTIQUE**

105 N. Main St.
Chelsea

P.S. — Our yarns
have arrived.

Altar Society Plans Christmas Bazaar, Bake Sale

Monthly meeting of St. Mary Altar Society was held Monday evening, Dec. 7, in the school hall with 32 members and two guests present.

Meeting was opened with a prayer led by the president, Mrs. Henry LaRose.

Serving on the December Altar Committee are Mrs. Mary Kniss, Mrs. Walter Zeeb and Mrs. Charles Stapish, Jr.

Contact Lady, Mrs. Wayne Harvey, suggested that articles for the Pope's Storehouse, new clothing, sizes 0 through 12, be brought in during Lenten meetings in February and March. Layettes for infants may be donated. A list of required layette articles may be obtained from Mrs. Harvey.

Mrs. Dennis Guinan, Good Samaritan committee, reported on the activities at the "House by the Side of the Road." At present summer clothes are being transferred to make room for winter articles.

Refreshment chairman for January is Mrs. Del Erickson.

Mrs. George Brettschneider announced that about 800 pounds of used clothing was packed and delivered to Ann Arbor, which was collected during the Bishop's Relief Drive.

Christmas bazaar and bake sale will be held Saturday, Dec. 12, at the town hall. Articles for the bazaar may be brought in Friday afternoon from 2 p.m. to 4 p.m. only.

Christmas list of shut-ins was discussed and brought up to date. President led the group in prayer at the close of the meeting.

Refreshments were served by Mrs. James Gaken and her committee.

Prior to the meeting, a Christmas program was presented by the boys from St. Louis school, under the direction of the Rev. Fr. Umberto.

Ever think there could be something good about calories in food? There is. Calories represent energy. Depending upon the food, calories may be good or poor carriers of essential nutrients. Make them serve you well by eating the foods which supply minerals, protein, vitamins and other nutrients. Trading one food for another on the basis of calorie value alone is a dangerous practice, according to nutritionists at Michigan State University.

Past Noble Grands

Past Noble Grand Club of the Rebekah Lodge met at the home of Mrs. Geno Coltre, Flanders St., Tuesday, Dec. 8, for their Christmas meeting.

A dessert luncheon was served by the hostess and co-hostess, Mrs. Luther Hale, to the 17 members and two guests present.

Incoming noble grand, Mrs. John Harook, and vice-grand, Miss Nadine Packard, were welcomed into the club.

Guests included Mrs. Achsh Rissig and Mrs. Edith White. Mrs. Donovan Sweeney and Mrs. Clarence Lake, two members living in Florida, called to wish everyone present a happy holiday.

Santa Claus' helper, in the form of Mrs. Elwood Keezer, helped deliver the gifts to the members from their Secret Pills for the past year.

A silent prayer was given in honor of Mrs. Anna McDonald and

Hold Christmas Party

for all other members unable to attend. A living circle prayer and a thought for the evening was read by Mrs. Altstaetter, president.

Door prizes, made by Mrs. Gale Wilson, were awarded Mrs. Edith and the Walter Hoffmans of Grass.

January meeting will be held brought many of the dolls, which with Mrs. Al Hinz as co-hostess. Date is to be announced.

Announcements that the lodge meeting will be Dec. 15, and that each member is to bring a half a dozen Christmas cookies were made.

Sewing machines are equipped with devices to control tension at both upper and bobbin threads. Properly adjusted tensions give a balanced stitch. Adjustments usually are made in the upper tension instead of the one which controls the bobbin thread.



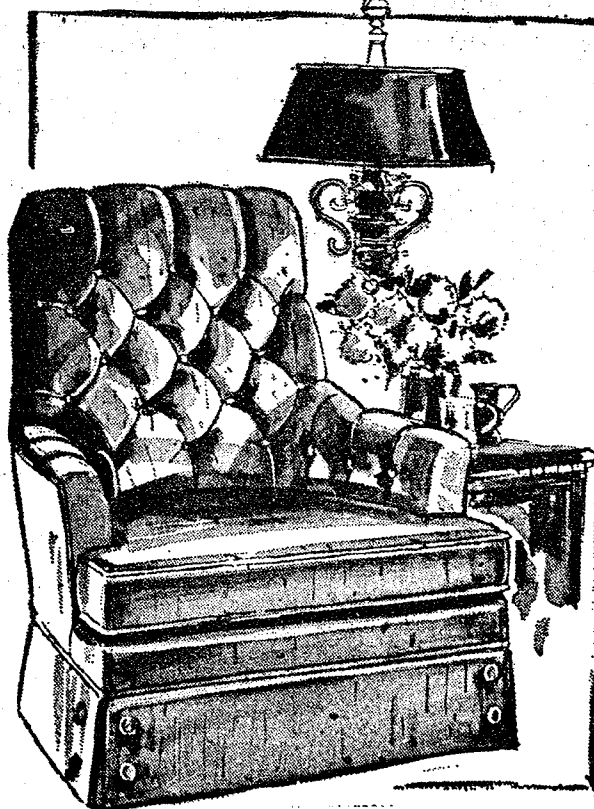
LORELKI \$250 WEDDING RING 20.75 POETIQUE \$350 ALSO TO \$250 WEDDING RING 24.75

Make Christmas Really Sparkle This Year

Give the extra-special, perfect gift... a Keepsake diamond ring. Flawlessly clear, beautifully styled. Keepsake will be a joy forever. Visit our diamond counter and see that special "Keepsake sparkle."

WINANS
JEWELRY

CHAIR SALE



**LAST 3 DAYS!
OVER 100 STOCK CHAIRS**

LA-Z-BOYS - SWIVEL ROCKERS
LOUNGE & OCCASIONAL MODELS
TRADITIONAL, COLONIAL, MODERN

SAVE 20%

Merhel

HOLIDAY HOME FURNISHINGS

OPEN MONDAY AND FRIDAY UNTIL 9:00 P.M.

WHAT'S NEW?

Ask us... we care enough to bring
you the LATEST STYLES!

The most advanced techniques available
in our profession.

Feel welcome in our salon... we appreciate you.

HOUSE OF ORIENT
HAIRSTYLING

103 W. Middle

PHONE 475-8196

Chelsea, Mich.

**CHELSEA
CHRISTMAS SHOPPING
HOURS**
Stores Will Be Open 8 Nights
Until 9:00 p.m.

(Clip and Save for Future Reference)

| 1970 DECEMBER 1970 | | | | | | |
|--------------------|------------------------|----------------------|----------------------|--------------------------|----------------------|------|
| SUN. | MON. | TUES. | WED. | THURS. | FRI. | SAT. |
| | | 1 | 2 | 3 | OPEN 4 'TIL 9 | 5 |
| 6 | 7 | 8 | 9 | 10 | OPEN 11 'TIL 9 | 12 |
| 13 | 14 | 15 | OPEN 16 'TIL 9 | OPEN 17 'TIL 9 | OPEN 18 'TIL 9 | 19 |
| 20 | 'TIL 9 21 'TIL 9 | OPEN 22 'TIL 9 | OPEN 23 'TIL 9 | CLOSE 24 AT 6 P.M. | 25 | 26 |
| 27 | 28 | 29 | 30 | 31 | | |

CHELSEA BUSINESSMEN'S ASSOCIATION



Kemner - Lubic Wedding Vows Exchanged

Diana Barr-Kemner and Richard Lubic, son of the late Mr. and Mrs. Adolph Lubic, formerly of Chicago, were married at a candle-light ceremony Friday evening, Dec. 4, at the home of the bride's parents, Mr. and Mrs. Merle Barr, Sr., 1288 Manchester Rd. The Rev. Daniel Kellin, pastor of the Congregational church, officiated in the presence of the immediate families of the couple.

David McVay, organist for the ceremony, and Ron Douglass played an organ and French horn duet, "Allerseelen" during the service.

For her wedding the bride wore a street-length dress of deep olive green velvet, trimmed in white fur, a matching pillbox hat, and carried a white fur muff with an arrangement of white roses, white carnations and green velvet streamers.

The bride's sister, Mrs. Edward (Virginia) Visel, was matron of honor. She wore a velvet dress of deep gold trimmed with gold brocade. A matching head-band and a bouquet of bronze mums and yellow roses completed her costume.

Ernest Hawkins of Kalamazoo, brother of the bridegroom, was best man, and the bride's young sons, Kevin and Corcoran Kemner, also participated in the ceremony.

Home Economics Study Groups Calendar

Week of Dec. 9-16

Thursday, Dec. 10—Friendly Corners, Mrs. Al Urton, 9740 Cherry Hill Rd., Ypsilanti.

Friday, Dec. 11—Northfield, Co-operative Christmas dinner, Red Cross Building, 6:30 p.m.

Saturday, Dec. 12—Rogers Corners, Mrs. Walter Loeffler, 12180 Walters Rd., Chelsea.

Tuesday, Dec. 15—West Bridge-water, Bridgewater Townhall, Mrs. Art Ekin and Mrs. Robert Service, hostesses.

Tuesday, Dec. 15—Fosdick, Christmas pot-luck, Farm Bureau Building, Saline-Ann Arbor Rd., 6:30 p.m.

Tuesday, Dec. 16—Lodi, dinner at Holiday Restaurant, Mrs. Raymond Lambirth, hostess.

Tuesday, Dec. 16—Mrs. Roy Cain, 822 Marvin St., Milan.

Tuesday, Dec. 16—Model Home-makers, Mrs. Arthur Shankland, 1137 Arella, Ann Arbor, Christmas party, 7:30 p.m.

Wednesday, Dec. 16—Friendly Dames, Christmas party, Saline Township Hall, Brown Rd.

Wednesday, Dec. 16—North Lake, Mrs. Carl Lesser, 8521 Island Lake Rd., Dexter.

Wednesday, Dec. 16—Delhi, Mrs. Leonard Meabon, 2166 Peters Rd., Ann Arbor.

WEATHER VS. MINISKIRTS
London—Britain's first big freeze of 1969 had the fashionable ladies freezing in their thigh-high skirts. The heating system failed at Reading College of Technology and the girls said that their knees and legs were turning blue.

Telephone Your Club News
To GR 5-3581.



FUTURE BRIDE: Mr. and Mrs. Stephen Clark of Chelsea, announce the engagement of their daughter, Bonita Jean, to Walter Michael Dempich, the son of Mr. and Mrs. Peter Dempich, Sr., of Lincoln Park. A May 21 wedding is planned. Miss Clark is a 1966 graduate of Chelsea High school, and is employed by Michigan Bell Tele- phone Co. Her fiancé is a gradu- ate of Lincoln Park High school and the Detroit College of Applied Science. He is em- ployed by Rex Industries in Melvindale.

At the reception which followed, a three-tiered wedding cake made by the bride's sister, Mrs. Visel, was served by her sister-in-law, Mrs. Merle S. Barr, Jr. A sister-in-law of the bridegroom, Mrs. Edwin Lubic of Kalamazoo, was in charge of the guest book. Following their return from their wedding trip, the couple will make their home, for the present, with the bride's parents.

The new Mrs. Lubic is a graduate of Chelsea High school and Carnegie Institute and is employed at the Huron Valley Bank, Ann Arbor.

The bridegroom is a veteran of the U. S. Army and U. S. Marine Corps, having served in Korea and Vietnam. He is a helicopter pilot and is now associated with the Minutemen Helicopter Corp. of Columbus, O.

Club and Social
Activities

KINDER KLUB
Kinder Klub Child Study Club met Tuesday, Dec. 8, with 11 members present.

A progressive Christmas party was the activity for the evening. Hostesses and co-hostesses were Mrs. Edson Whitaker, Mrs. James Krichbaum, Mrs. Duane Downer, Mrs. Dan Ewald, Mrs. Kenneth Roberts, and Mrs. Justice Marshall.

A gift exchange concluded the evening. The next meeting will be Jan. 12, at the home of Mrs. Donald Proctor.

LYNDON FARM BUREAU
Lyndon Farm Bureau met at the Lyndon Town Hall on Dec. 5, with 11 members and three guests present, for a 7 p.m. pot-luck supper.

Meeting was called to order by Chairman Max Kalmbach. William Hogan gave a report on the Grand Rapids convention. They brought back literature for members to take home and study.

Next meeting will be held at the town hall on Jan. 9. A social hour followed the meeting, with cards.

MODERN MOTHERS
Modern Mothers Child Study Club met Tuesday evening, Dec. 8, at the home of Mrs. Phillip Hume for their annual Christmas party. 12 members were present, including two new members, Mrs. Robert Riemenschneider and Mrs. Warren Porath, Jr.

A home-made dessert and recipe exchange was held with refreshments following.

Next meeting will be Tuesday, Jan. 12, at the home of Mrs. Tom Dunlap.

MAIL PROBLEMS
Mailmen in the United States complain about dogs, but things could be worse. Egyptian mailmen are sometimes nipped by camels, mailmen in Brazil have been bitten by jaguars, a Tongan island mailman was killed by a shark, and Afghanistan suspended rural deliveries a few years ago because leopards ate the mailmen.

Contrary to popular belief, sawdust does not make soil turn acid enough to worry about. No sawdust, except that from walnut wood, has a toxic effect on soil—and sawdust mulch holds water well.

TODDY and FRAN
Are you dreaming of a wig for Christmas? If not, why not? There's nothing that will last you into next year with more wearability. Nothing that, given to you ahead of time, will stand in better play for the present season when emergencies seem to pop up most often. And we seem to be least often prepared for them. No need to face them with a grooming problem if you have a wig to pop on! Look your best at the drop of an invitation. Let our expert fit you now and you can wrap the receipt and sign it from Santa Claus for the tree...

Magic Mirror Beauty Salon
Phone 665-0816
5595 Jackson Rd., Ann Arbor

Co-Op Nursery Has Openings for Second Semester

A rewarding experience awaits parents and their pre-schooler, beginning Jan. 5, when the Chelsea Co-Op Nursery begins its second semester. The three- and four-year-olds assist classes will each have a few openings. The school is open to all Chelsea-Dexter area residents. For more information, call Mrs. Carl Robinson, membership chairman, at 426-4128.

Western Michigan University's program of Continuing Education each year offers approximately 800 classes in sixteen counties of Southwestern Michigan.

Woman's Club Holds Christmas Party

Chelsea Woman's Club met at the library Tuesday evening, Dec. 8, 31 members and five guests were present.

Eleanor Meininger presented the Christmas program. She spoke on the history of dolls. She has a doll collection of more than 500 dolls from around the world. She 209, 213; Jack Risner, 214, 191; were on display throughout the room. She showed how the different dolls had been made.

All members brought in their gifts for the Maxey Boys School at Whitmore Lake.

Hostesses for the evening were Betty Cook and Mary Turcott. Next meeting will be Jan. 21.

SCHOOL LUNCH MENU!

Week of Dec. 14-18
Monday, Dec. 14—Italian spaghetti, grated cheese, buttered green beans, bread, butter, ice cream cup, cookie, and milk.

Tuesday, Dec. 15—Coney Island hot dog, with buns, trimmings, pork and beans, ginger bread, with topping, and milk.

Wednesday, Dec. 16—Meat balls, tomato sauce, buttered rice, bread, butter, lemon custard, and milk.

Thursday, Dec. 17—Submarine sandwich, sauce, soup of the day, crackers, Jel-O and cream, and milk.

Friday, Dec. 18—Fishburgers, buns, tartar sauce, potato sticks, salad, dessert, and milk.

THE STYLE SHOP

207½ S. Main St.

OPEN

Tues. thru Sat.

Call 475-8400

For Appointments

Open Wed. & Thurs. Evenings

Judy Patrick

Pansy Kuhl - Rosemary Klink



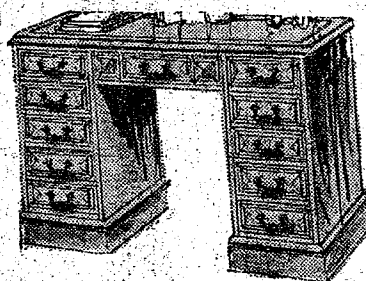
GIFTS for HOME-LOVERS



TABLE LAMPS

Brass, China, Wood

\$15.95 to \$119.95



DESKS

Oak, Pine, Walnut, Maple

\$89.95 to \$244.95



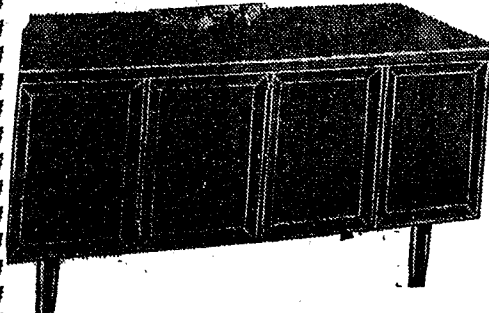
Solid Maple BREAKFAST SET

With Plastic Top

\$169.95



MARBLE TOP BUNCHING TABLES - \$49.95



LANE CEDAR CHESTS

\$79.95 to \$129.95

Walnut, Maple, Pecan



GIVE A Gift Certificate



FOLDING FURNITURE

TABLES . . . \$10.95 to \$22.95

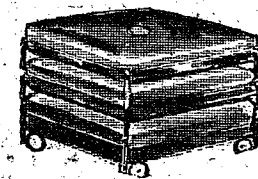
Chairs, set of 4 - \$19.95 to \$47.50



TOSS PILLOWS

A Dazzling Array

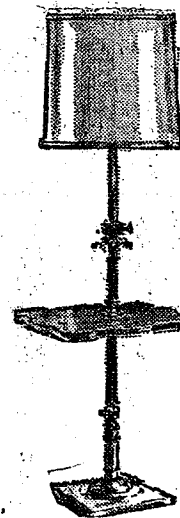
\$2.99 to \$19.95



STACKING FLOOR CUSHIONS

On Casters

Velvet, \$29.95; Vinyl, \$35.95



FLOOR LAMPS

With Trays

\$35.95 to \$144.95



HALL COMMODES

Cherry, Pecan, Gold

\$95.95 to \$224.95

VILLAGE BEAUTY SALON

Wash and Set, \$3.50 - Hair Cut, \$2.50

LORETTA PANNONE, Owner - Operator

CINDY KEMNER - EULA MONTGOMERY

JANICE RUDD - SARAH TAYLOR

Open 8:30 a.m. Monday thru Saturday

Evenings by appointment. Phone 475-5421

COUPON

HOLIDAY SPECIAL ON MONDAYS ONLY

\$5 Off Regular Price on Frostings

or Perms with this coupon.

NOW THROUGH DEC. 14, 1970

COUPON

GAMBLES

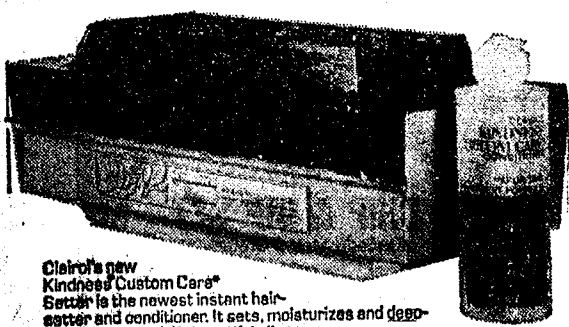
FAMOUS BRAND GIFTS

At Lowest Prices!

CLAIROL CREATES THE
CONDITIONING HAIRSETTER

KINDNESS®

CUSTOM CARE



Clairol's new
Kindness Custom Care®
Setter is the newest instant hair-
setter and conditioner. It sets, molaturizes and deep-
conditions your hair beautiful all at once.

Works three ways: for a conditioned set, add
Clairol Kindness Custom Care Conditioner (packed with
setters); without conditioner, it gives a great regular Kindness set;
or just add water for a water-moist set.

Welcome to the new world of Clairol deep-conditioned hairsetting.

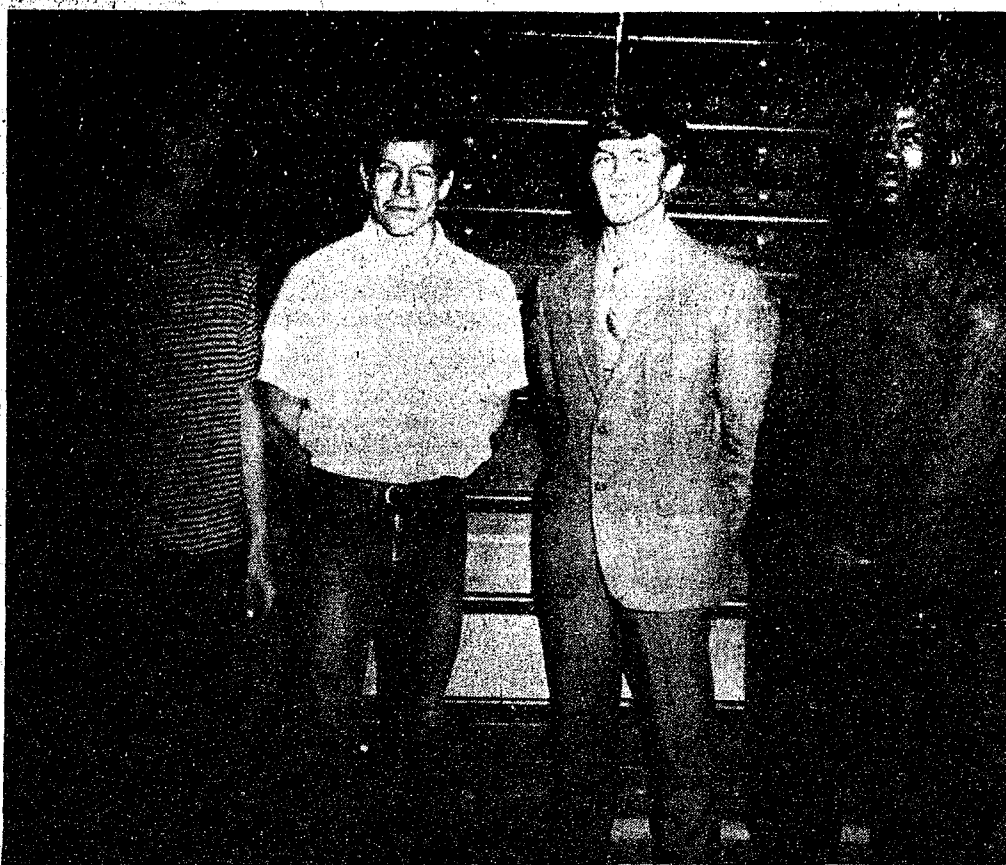
GAMBLES

OPEN
MON. & FRI.
TILL 9

Merkel

HOLIDAY HOME FURNISHINGS

Phone
Chelsea
475-8621



AWARD WINNERS from this year's football team, and co-captains for next year's team, which were announced at the Monday evening, Nov. 30, awards dinner are, from left, Mark Collins, who was most improved back for the Bulldogs; Tom McKernan, who was elected most improved line-

T. McKernan W. Welton To Lead '71 Bulldog Gridders

Awards night for the 1970 football teams was held Monday evening, Nov. 30, at the cafeteria at Chelsea High school. The event, a traditional dinner, was a parent pot-luck this year, sponsored by the parents of the boys involved, and planned and directed by the mothers of the co-captains, Mrs. Eldon Gorton, Mrs. Sylvester Wojcicki, and Mrs. Thomas Bust.

Announcement of the lettermen, most valuable players, and next year's captains was the evening's program.

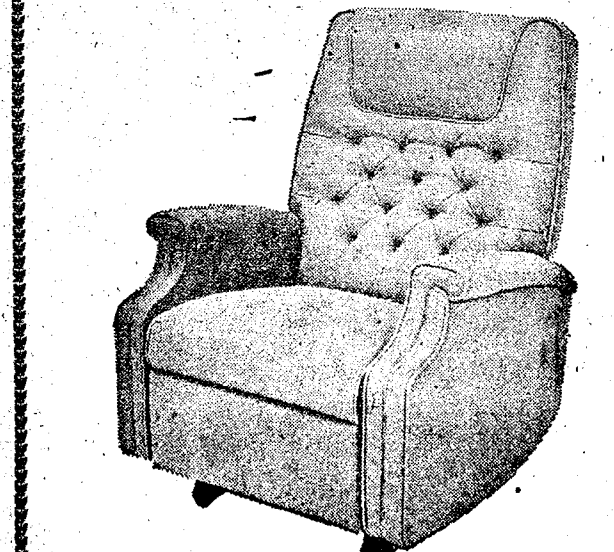
Those winning letters in football for their first year on the varsity team included sophomore Jeff Schmidt, Ralph Stewart, Joe Aspranti, Tom Lixey, Mark Collins, Keith Pfeifle, Bob Wojcicki, Wayne Welton, Tom McKernan, Steve Knickerbocker, Ed Koengter, Dave Lukasiak, Dennis Landwehr, Jeff Hughes, Doug MacDonald. First-year seniors included Howard Treado, Duane Bycraft, Mark Schulze, and Rick Westcott.

Those winning letters for their second year on the varsity team included Randy Seitz, Jr.; and seniors Mike Giffin, Chris Marzee, Bob Salvers, Tom Harmon, Jack McClear, Dale Robbins, Mike Powers, Tom Lukasiak, Mitchell Herd, Jeff Bust, and Larry Gorton. Jim Wojcicki lettered for

GAMBLES

Christmas Special

ACTION COMFORT!



King-Size Herculon®
Rocker-Recliner

Regularly \$189.95
\$139.95 Use Your Credit

Here's a chair that bends over backwards for your comfort! It rocks... it reclines for the best in relaxation with built-in head rest. Styloam cushion, semi-attached back, Lawson arms. Gold or olive stain resistant Herculon olefin cover. Walnut finish base.

SAVE \$50.00

Village Clerk Will Register 18-Year-Olds

Chelsea Village Clerk Richard Harvey announced this week that in accordance with the ruling of the Attorney General of this state, Frank Kelley, he will be accepting registration of those residents who are between the ages of 18 and 21 years old.

Harvey indicated that he received this past week a letter from Robert M. Harrison, Washtenaw County Clerk, directing him to do so. Harrison cited the Nov. 30 proclamation by the Attorney General, which stated that under the prescriptions of the Federal Voting Rights Act, Michigan must abide by the Federal ruling concerning the vote for 18-year-olds, rather than the decision reached by the people of the state.

The Federal Voting Rights Act, which gives to all 18-year-olds the right to vote, is still pending a Supreme Court decision. Unless that law is declared unconstitutional by Jan. 1, Gov. Milliken, on the advice of Kelley, has informed U. S. Attorney General John Mitchell of Michigan's intention to conform to the federal law.

Michigan voters turned down "Proposal B" in their recent November elections, which if followed would have extended the vote to 18-year-olds.

Harvey indicated that registration of 18-year-olds must be kept separate from the 21-and-older file, pending the decision of the Supreme Court. Voters of that age may register any weekday, Monday through Friday, from 8 a.m. until 5 p.m., with Harvey, whose offices are at the Chelsea Electric & Water office, on E. Middle St.

French Classes Sponsoring Film Showing Dec. 19

"Gay Purree" will be shown at CHS auditorium on Dec. 19, at 1:30 p.m. This second annual program is sponsored by French 3 and 4 classes. The proceeds will go towards their trip to Quebec city in the spring.

Local children are urged to come see Santa and enjoy the animated color cartoon about two cats in Paris. The film stars the voices Robert Goulet and the late Judy Garland.

Entire program will be two hours long. Refreshments will be available.

STOP FROZEN PIPES!

Use WRAP-ON®
ELECTRIC
HEAT
TAPES

NO TIME LIMIT
FREE REPLACEMENT
GUARANTEE!

GAMBLES
110 N. Main St.



GIFT-GIVING MADE EASY



EVANS
SLIPPERS

BARONET OPERA
Listens to his
prayer for this
opera slipper! Soft
leather, soft
lining, soft
padding sole.

\$6.95 to \$10.95

STRIETER'S
CHRISTMAS STORE FOR MEN

"The Place To Go for Brands You Know"

CHELSEA PRO HARDWARE

110 South Main St.

Phone GR 9-6311

Extra Savings - A Present To You From Us

Seasons Saleables

PHILCO FM/AM MINIATURE PORTABLE \$16.88

Celebrity 2-SLICE TOASTER \$6.99

15-LIGHT OUTDOOR SET \$2.99

BASKETBALL AND GOAL SET \$7.99

Official BASKETBALL OUTFIT

Christmas Sale

30-CUP COFFEE MAKER

Party time - time saver
Completely automatic.
Makes coffee just the way you like it.

\$9.99

PROPANE TORCH KIT

Does 1,001 jobs around the house and work shop. Cylinder gives up to 15 hours burning time.

\$4.99

ICE SKATES

Good Selection of Sizes

WE TRADE
WE SHARPEN

TOBOGGANS

TOBOGOGN PADS
TRUE TEMPER SLEDS

CHRISTMAS TREE STANDS

From 66¢

TABLE TOP CHRISTMAS TREES

TREE LIGHTS

| | |
|-------------------------|--------|
| 15-LIGHT INDOOR SET | \$1.87 |
| 40-LIGHT INDOOR SET | \$8.99 |
| 35-MIDGET TWINKLERS SET | \$4.77 |
| 25-LIGHT OUTDOOR SET | \$4.99 |

CHRISTMAS COOKIE CUTTERS

We Have Them!

COMPLETE Fondue Set

Handsome 18-piece baked enamel ensemble. Two quart capacity fondue pot.

\$14.99 Reg. \$23.95

Black & Decker JIG SAW

Full assortment of 8 1/2" D blades allow you to make straight, scroll, cuts on wood, metal or plastic.

\$12.88

METAL SERVING TRAYS

Handsome decorated 12-sided tray. Ideal for Holiday meals and parties. Large 17 1/2" x 13" size.

99¢ EACH

FAN FORCED AIR ELECTRIC HEATER

Automatic thermostat keeps room at desired temperature. Powerful fan circulates heat.

\$9.99 SALE PRICE

Waffle Baker

Deluxe teflon coated grill. Automatic control for toasting, grilling, frying or baking.

\$19.99

7-Pc Wrench Set

Have the right wrench for the right job. Wrenches are open and closed end. Sizes from 5/16" to 3/4".

\$7.99

MEMO ROLL

Reminds you. Includes paper tape and pencil. Makes ideal Christmas gift.

\$1.17 Without Coupon \$1.98

FLASHLIGHT BATTERY

Standard "D" Type Battery With This Coupon

2 for 19¢ Limit 10 per customer

CHIP & DIP SET

Avocado Tinted Glassware With This Coupon

\$1.47 Without Coupon \$2.49